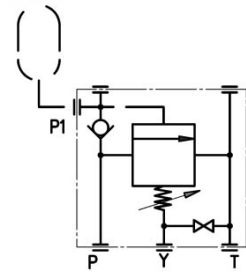




Characteristics

TYPE	THREADED PORTS			
	P	P1	T	Y
ICRU-12/03	1/2" BSP	1/2" BSP	1/2" BSP	1/4" BSP
ICRU-34/05	3/4" BSP	3/4" BSP	3/4" BSP	1/4" BSP

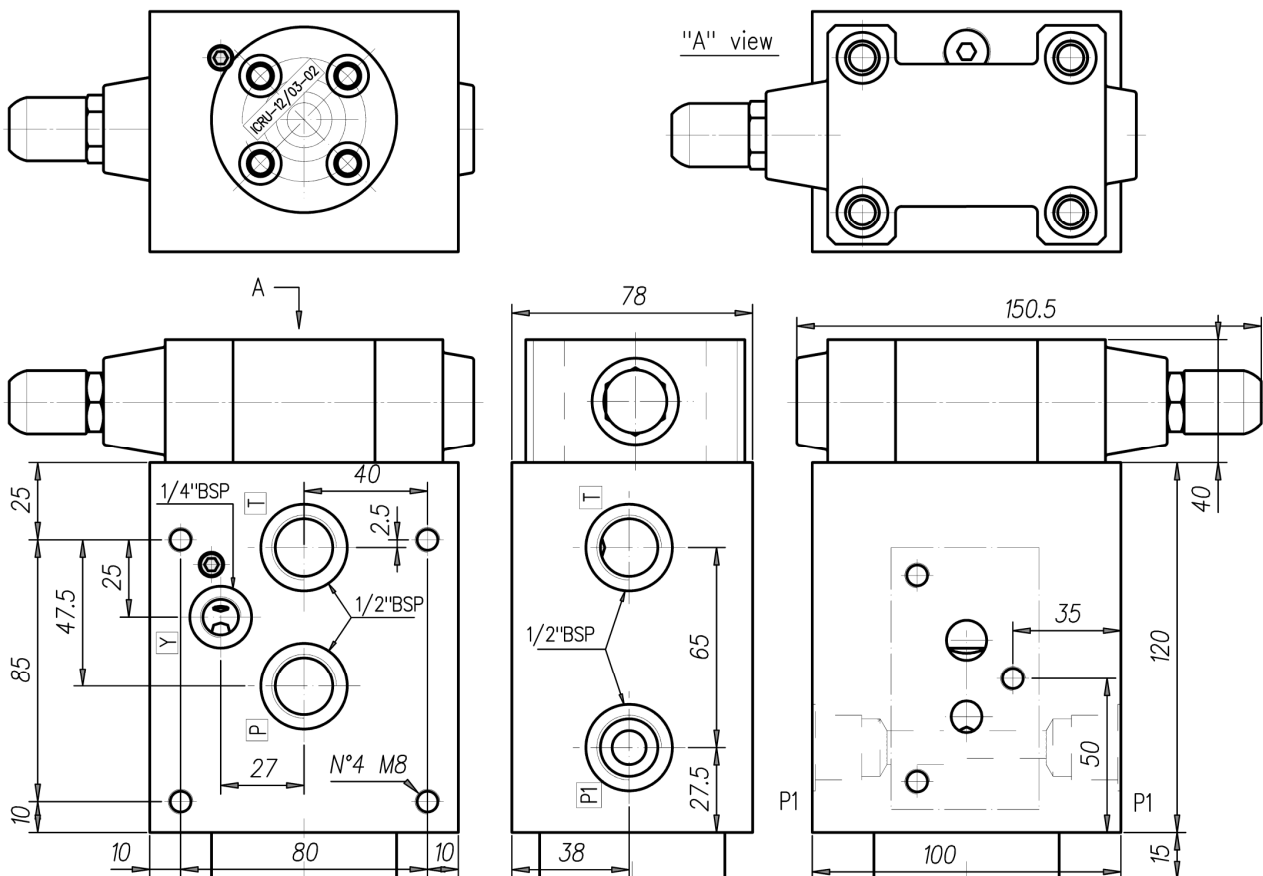
Symbol



Description

Two-stage cut-off valve equipped with check valve. It controls the max pressure value and allows Cetop-03 or Cetop-05 size solenoid valve modular mounting (See SBM-03/** or SBM-05/** modular subplate). It is generally matched with an accumulator and it allows the pump cut-off when the pressure setting is reached.

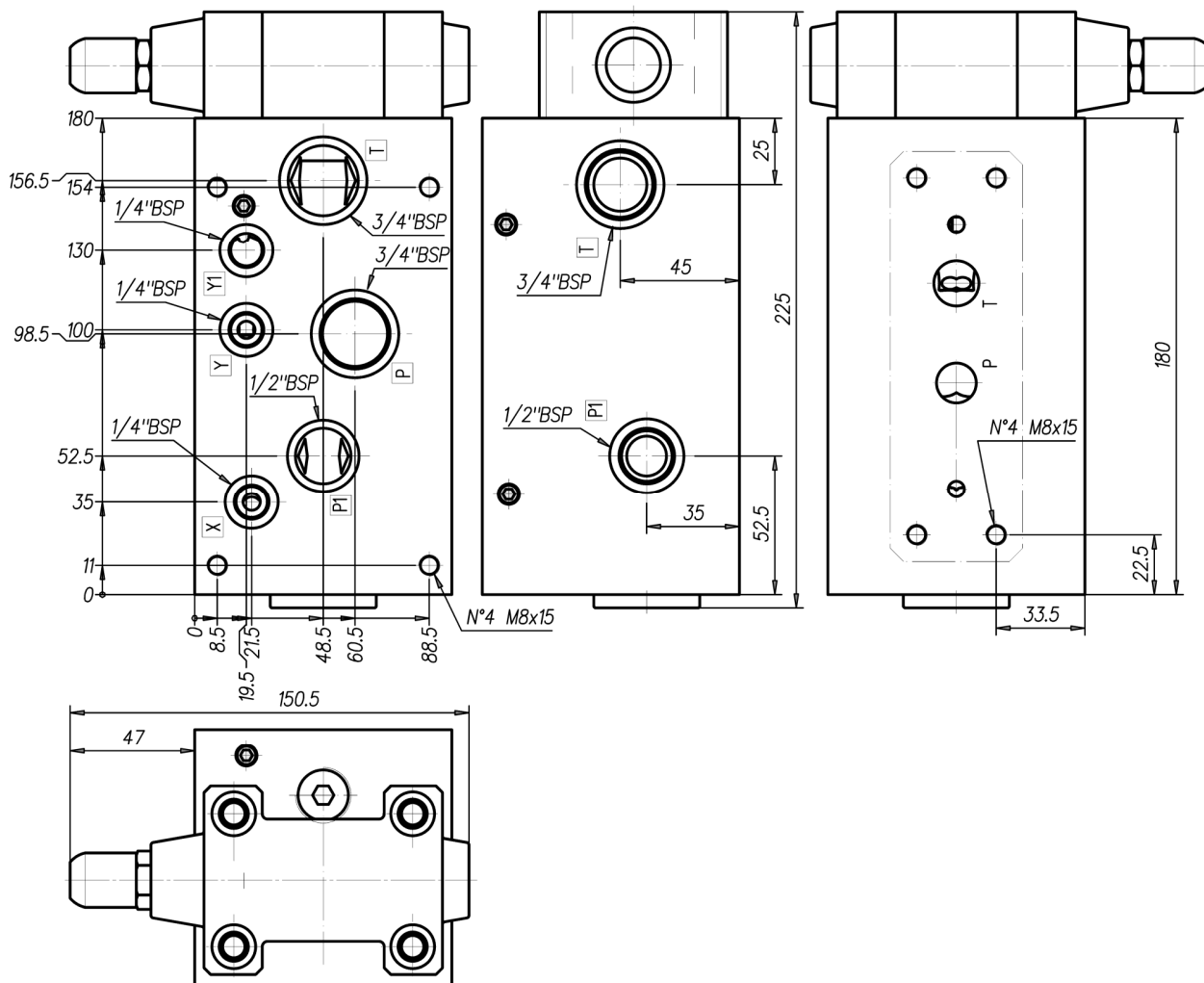
Dimensions



CUT-OFF VALVE



Dimensions



Installation rules

- The valves type ICRU can be mounted in any position
- Fluid to be used: hydraulic oil in compliance with DIN 51524 rules, viscosity between 30 and 100 mm²/s (cSt) at 40°C
- Recommended filtration of 25µ.
- Hydraulic fluid temperature: from -20° to +75°C

Ordering code

