

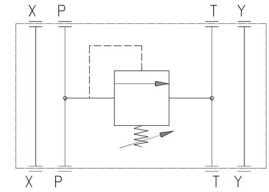
# CETOP-06R SIZE MODULAR SUBPLATE



## Characteristics

TYPE	SUGGESTED MAX FLOW	SUGGESTED MAX PRESSURE
<b>SBM-05/M-***</b>	60 l./min.	350 bar

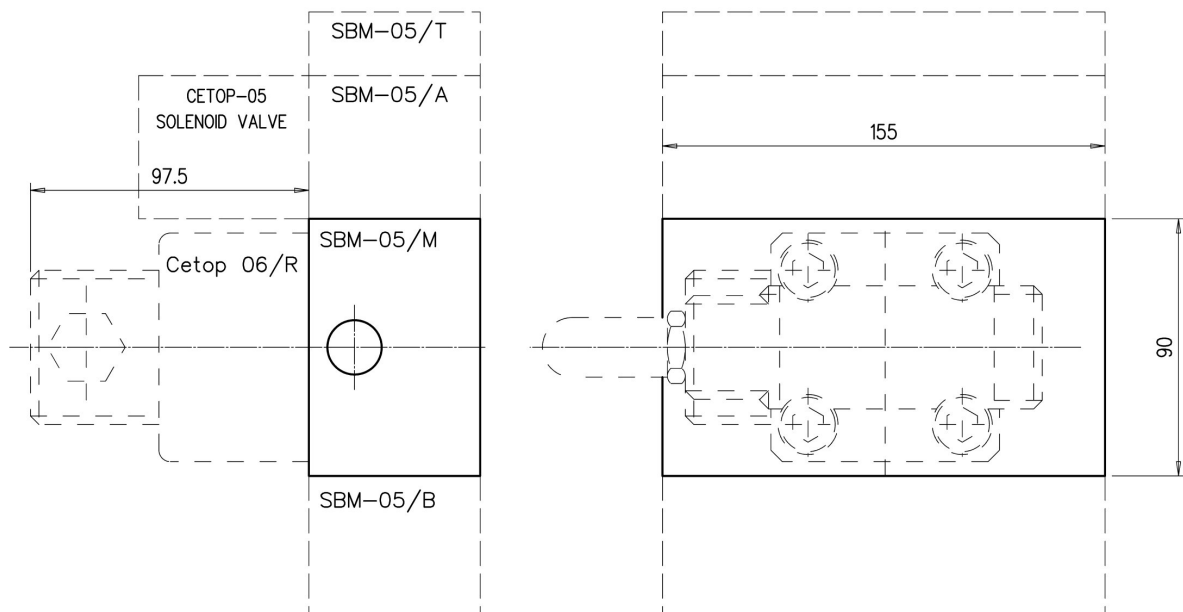
## Symbol



## Description

Modular subplate for mounting Cetop-06R size pressure control valve.  
Modular element to be matched with SBM-05 subplates.

## Dimensions



## Installation rules

- The subplates type SBM can be mounted in any position
- Fluid to be used: hydraulic oil in compliance with DIN 51524 rules, viscosity between 30 and 100 mm<sup>2</sup>/s (cSt) at 40°C
- Recommended filtration: 25µ
- Hydraulic fluid temperature: from -20° to +75°C

## Ordering code

**SBM-05/M - \*\*\***

Setting range : 100=0-100 bar 210=20-210 bar 350=50-350 bar

CETOP-06R size modular subplate