

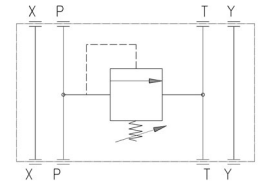
MODULAR SUBPLATE EQUIPPED WITH PRESSURE RELIEF VALVE



Characteristics

Symbol

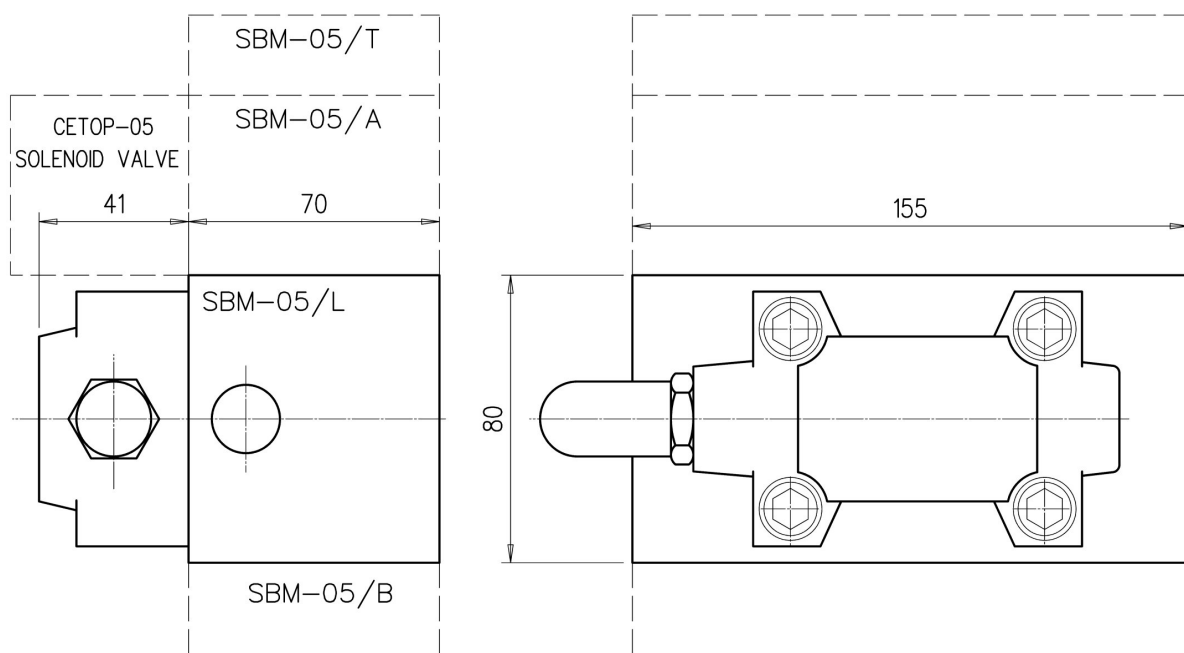
TYPE	MAX. FLOW	MAX PRESSURE
SBM-05/L-***	60 l./min.	350 bar



Description

Modular subplate equipped with pressure relief valve. Modular element to be matched with SBM-05/* subplate.

Dimensions



Installation rules

- The subplates type SBM can be mounted in any position
- Fluid to be used: hydraulic oil in compliance with DIN 51524 rules, viscosity between 30 and 100 mm²/s (cSt) at 40°C
- Recommended filtration: 25µ
- Hydraulic fluid temperature: from -20° to +75°C

Ordering code

SBM-05/L - ***

Setting range : 100=0-100 bar 210=20-210 bar 350=50-350 bar

Modular subplate equipped with pressure relief valve for CETOP-05 size groups