

CETOP-03 SIZE MULTI-STATION SUBPLATE



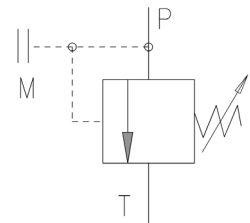
Characteristics

TYPE	PRESSURE	FLOW	THREADED PORTS	Ø SPOT-FACING	WEIGHT
SBM-03/MA15	2 ÷ 15 bar	50 l./min.	1/4" Bsp	20	3.2 Kg.
SBM-03/MA75	4 ÷ 75 bar		3/8" Bsp	23	
SBM-03/MA150	8 ÷ 150 bar				
SBM-03/MA250	8 ÷ 250 bar				
SBM-03/MA350	30 ÷ 350 bar				

Description

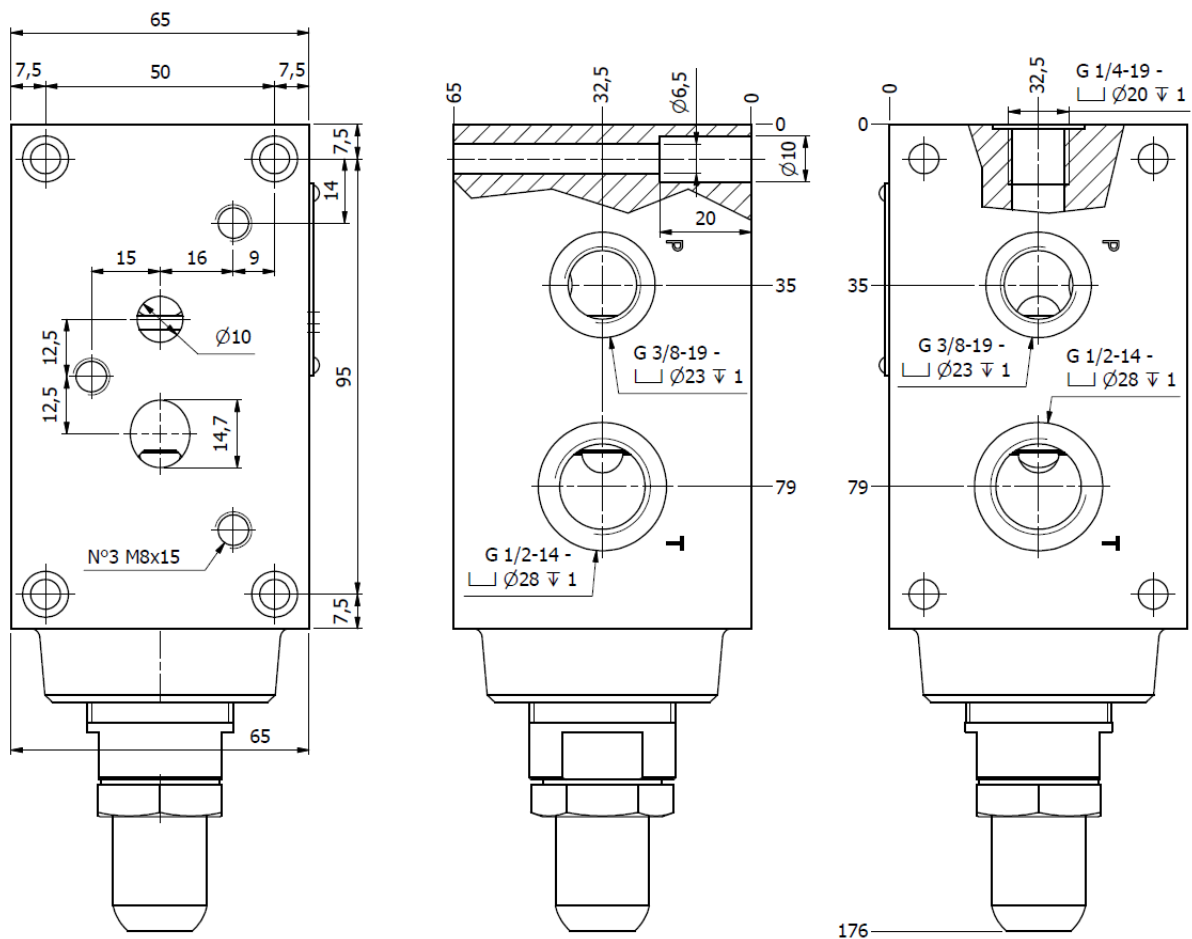
Subplate equipped with direct acting, pressure control for Cetop-03 size modular mounting.

Symbol



Dimensions

SBM-03/M***



Equipped with:
 one 3/8" cap.
 one 1/2" cap.

CETOP-03 SIZE MULTI-STATION SUBPLATE



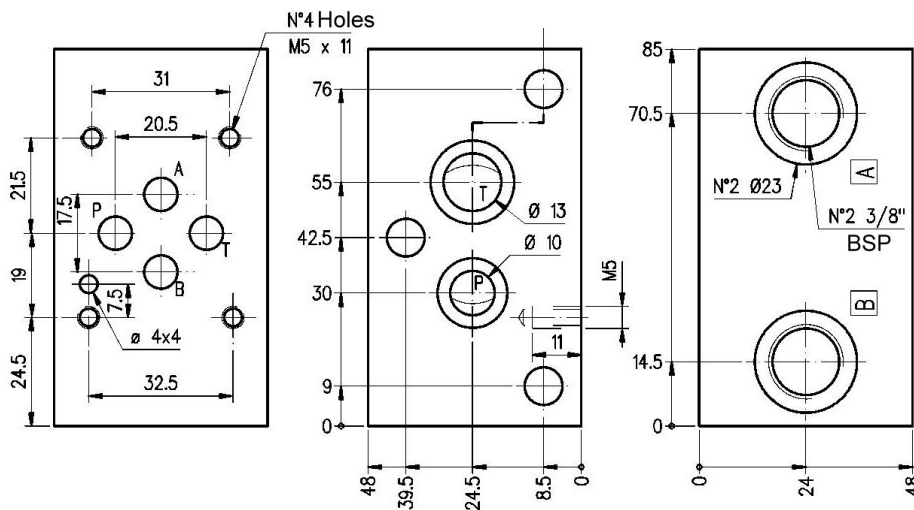
Overall dimensions

SBM-03/A SBM-03/A -70 SBM-03/A -75

Equipped with:

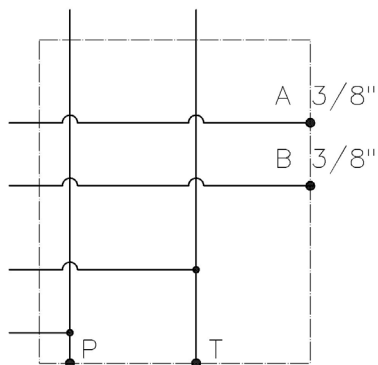
**1 OR-3043 seal
1 OR-3056 seal**

Weight: 1 Kg.

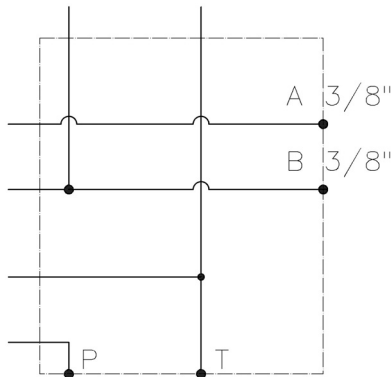


Symbol

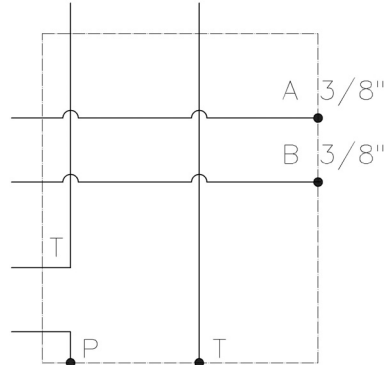
SBM-03/A



SBM-03/A-70



SBM-03/A-75



CETOP-03 SIZE MULTI-STATION SUBPLATE



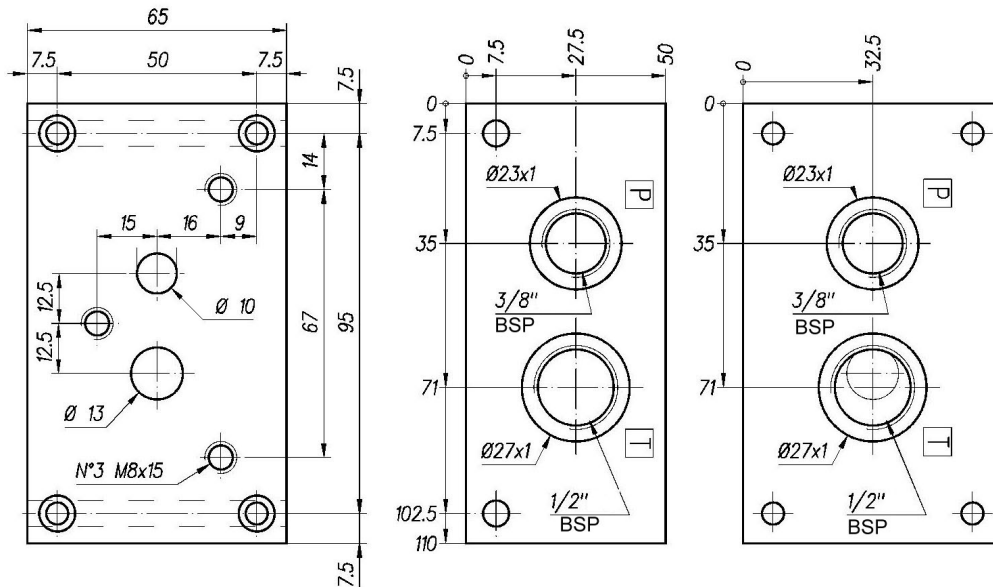
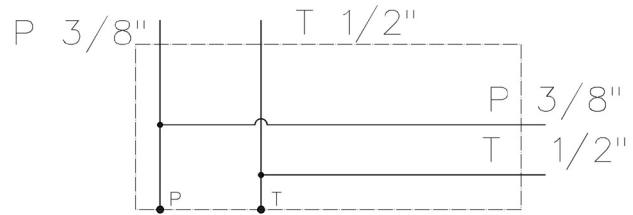
Basic element SBM-03/B

Symbol

Equipped with:

- 1 3/8" cap.
- 1 1/2" cap.

Weight 2.1 Kg.



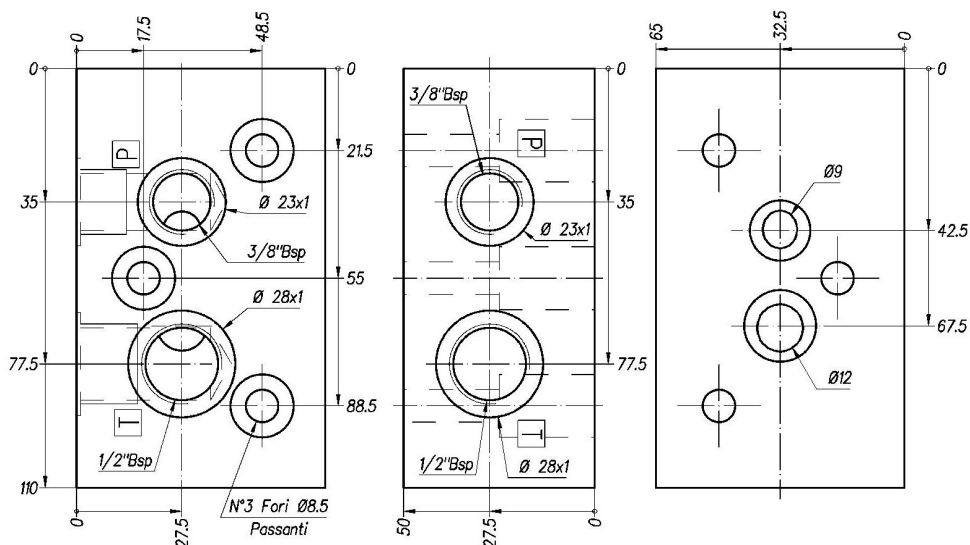
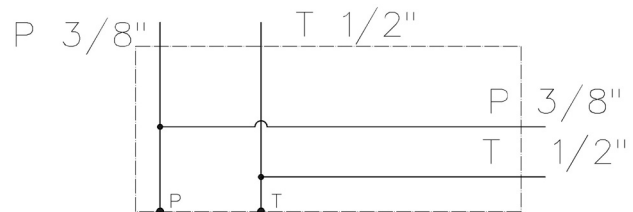
Closing element SBM-03/BT

Symbol

Equipped with:

- 1 OR-3043 seal
- 1 OR-3056 seal
- 1 3/8" cap.
- 1 1/2" cap.

Weight 2.1 Kg.



CETOP-03 SIZE MULTI-STATION SUBPLATE

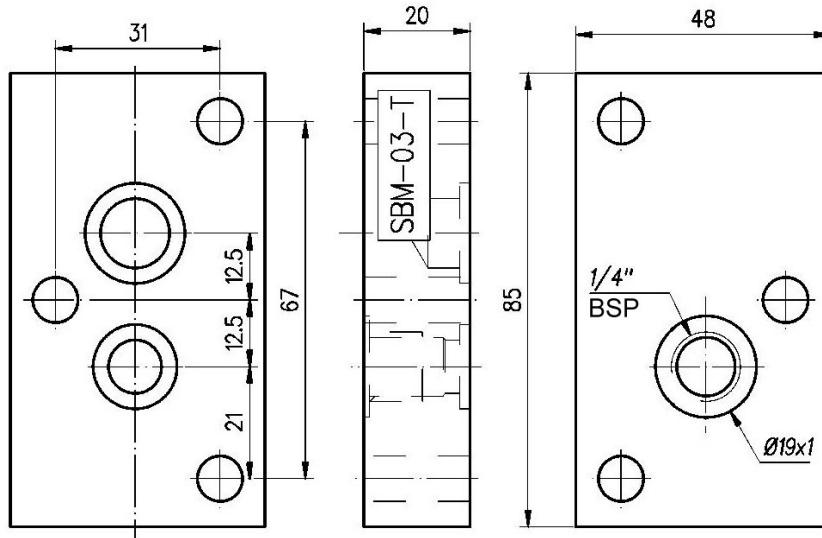
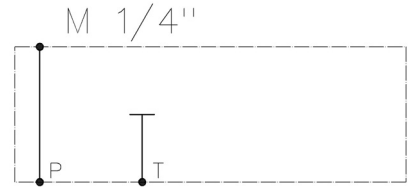


Closing element SBM-03/T

Symbol

Equipped with:
 1 OR-3043 seal
 1 OR-3056 seal

Weight 0.6 Kg.



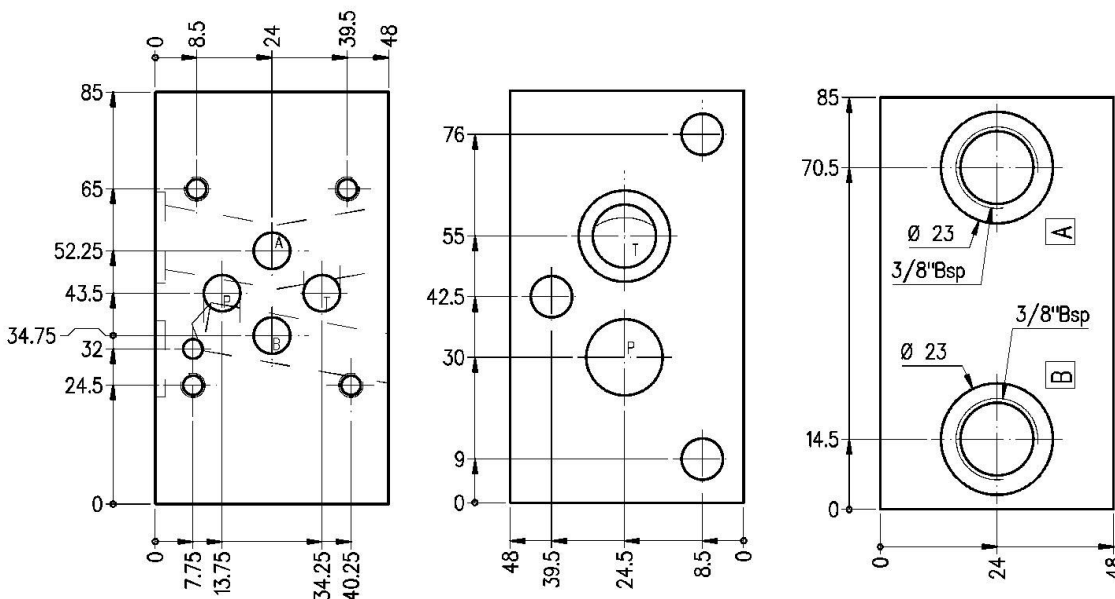
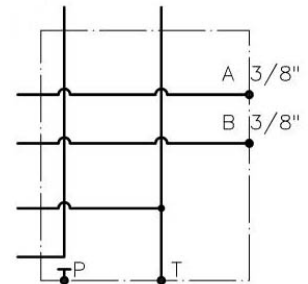
Intermediate element SBM-03/AP

Symbol

Equipped with:

1 OR-3043 seal
 1 OR-3056 seal

Weight 1 Kg.





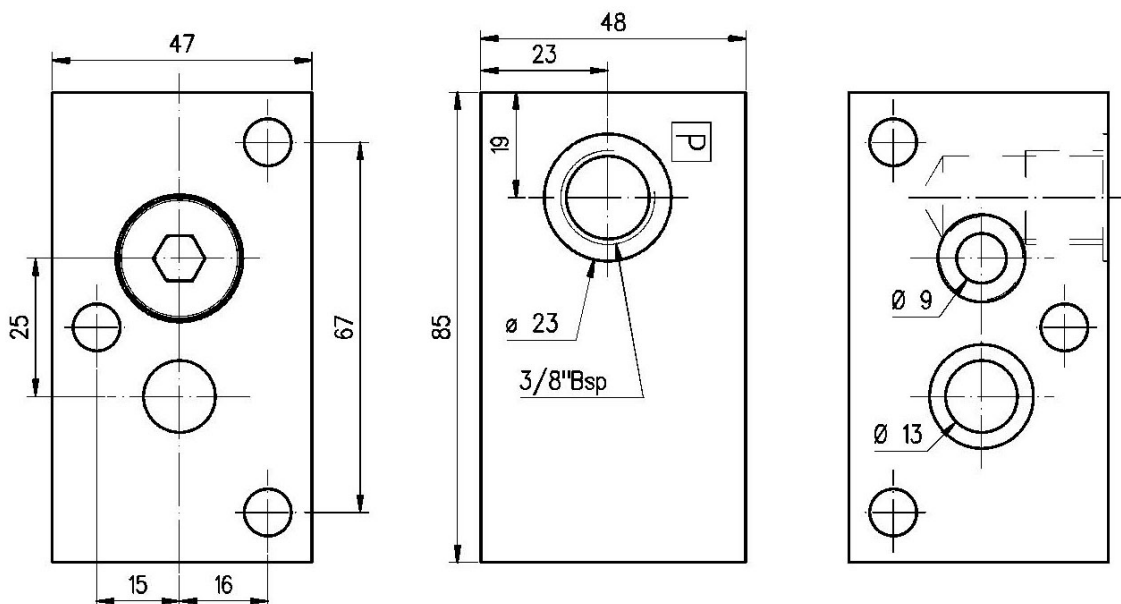
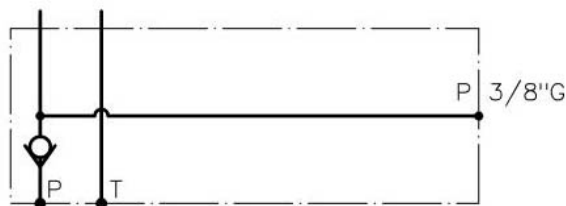
Intermediate element SBM-03/AR

Symbol

Equipped with:

- 1 OR-3043 seal
- 1 OR-3056 seal

Weight 1 Kg.



Installation rules

- The subplates type SBM can be mounted in any position
- Fluid to be used: hydraulic oil in compliance with DIN 51524 rules, viscosity between 30 and 100 mm²/s (cSt) at 40°C
- Recommended filtration: 25µ
- Hydraulic fluid temperature: from -20° to +75°C

Ordering code

SBM - 03 / ***

MA =	equipped with pressure relief valve Setting range: 15 = 2 ÷ 15 bar 75 = 4 ÷ 75 bar 150 = 8 ÷ 150 bar 250 = 8 ÷ 250 bar 350 = 30 ÷ 350 bar
A =	intermediate element, in parallel connection
B =	basic element without pressure relief valve
BT =	terminal element with auxiliary P and T ports on top side
T =	closing element with manometer port
A70 =	intermediate element with P closed
A75 =	intermediate element, in series connection
AP =	intermediate element with P closed
AR =	intermediate element with P check valve

CETOP- 03 size subplate