

CETOP-03 SIZE SUBPLATE EQUIPPED WITH PRESSURE RELIEF VALVE

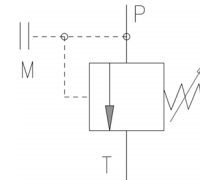


Characteristics

TYPE	PRESSURE	FLOW	WEIGHT
SBM-38-03/1-M50	5-50 bar	30 l./min.	3 Kg.
SBM-38-03/1-M100	30-100 bar		
SBM-38-03/1-M210	50-210 bar		
SBM-38-03/1-M350	100-350 bar		

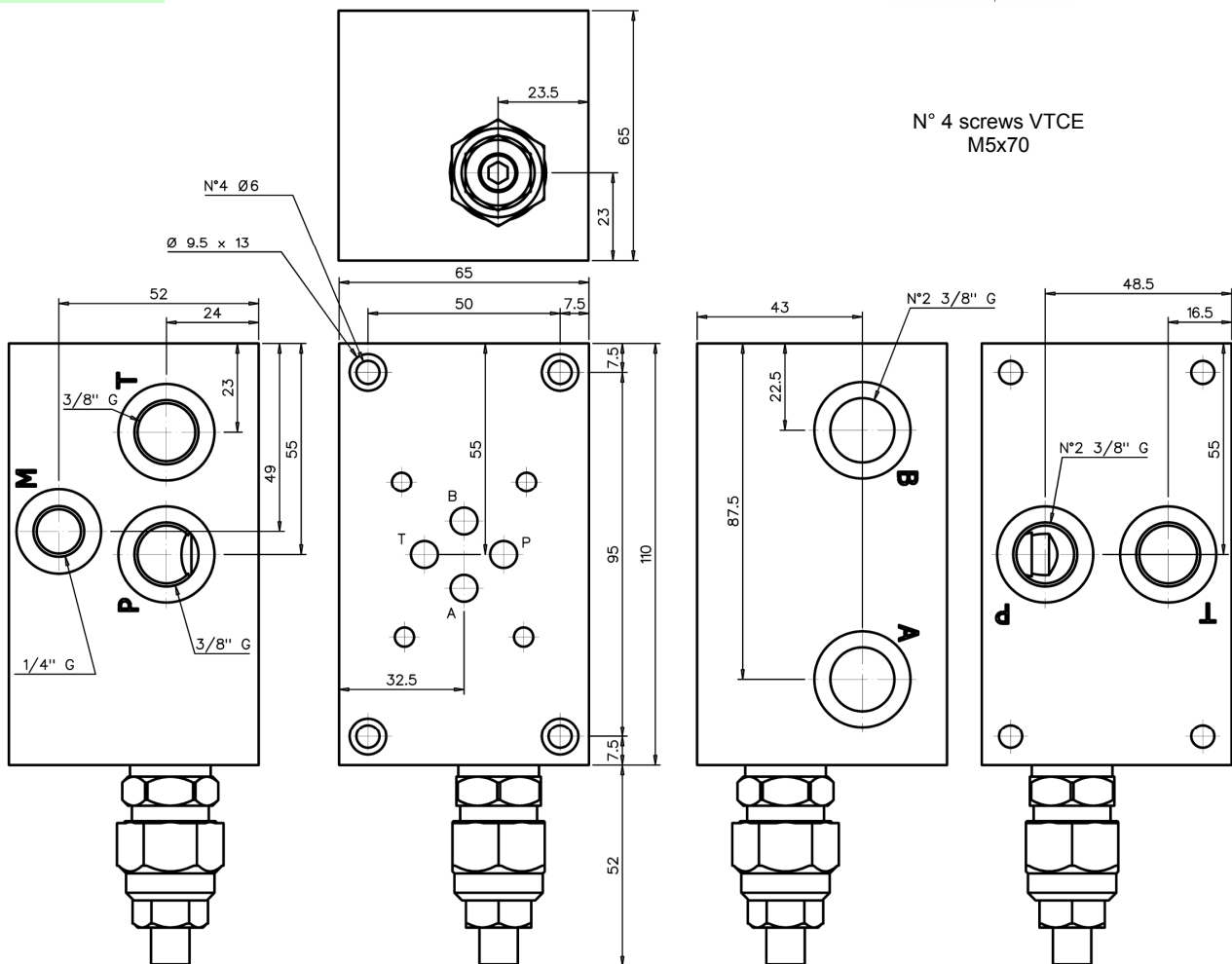
Description

Subplate for Cetop-03 size solenoid valve equipped with direct acting pressure control valve.



Symbol

Dimensions



Installation rules

- The subplates type SBM can be mounted in any position
- Fluid to be used: hydraulic oil in compliance with DIN 51524 rules, viscosity between 30 and 100 mm²/s (cSt) at 40°C
- Recommended filtration: 25µ
- Hydraulic fluid temperature: from -20° to +75°C

Ordering code

SBM-38-03/1-M ***

Setting range: **50** = 5 - 50 bar **100** = 30 - 100 bar **210** = 50 - 210 bar **350** = 100 - 350 bar

Subplate equipped with CETOP-03 size pressure relief valve and connections