

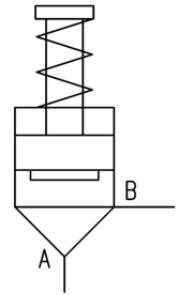
NORMALLY OPENED LOGIC CARTRIDGE VALVE



Characteristics

TYPE	SIZE	MAX WORKING PRESSURE	MAX RECOMMENDED FLOW (SUCTION FUNCTION)	AREA RATIO
ICLHB-25	DN - 25	350 bar	120 l/min	1 : 1.1
ICLHB-40	DN - 40		300 l/min	

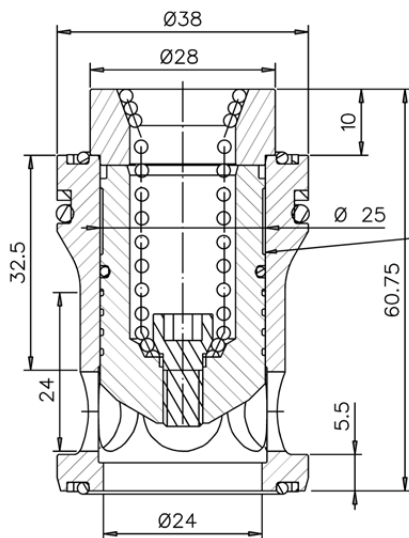
Symbol



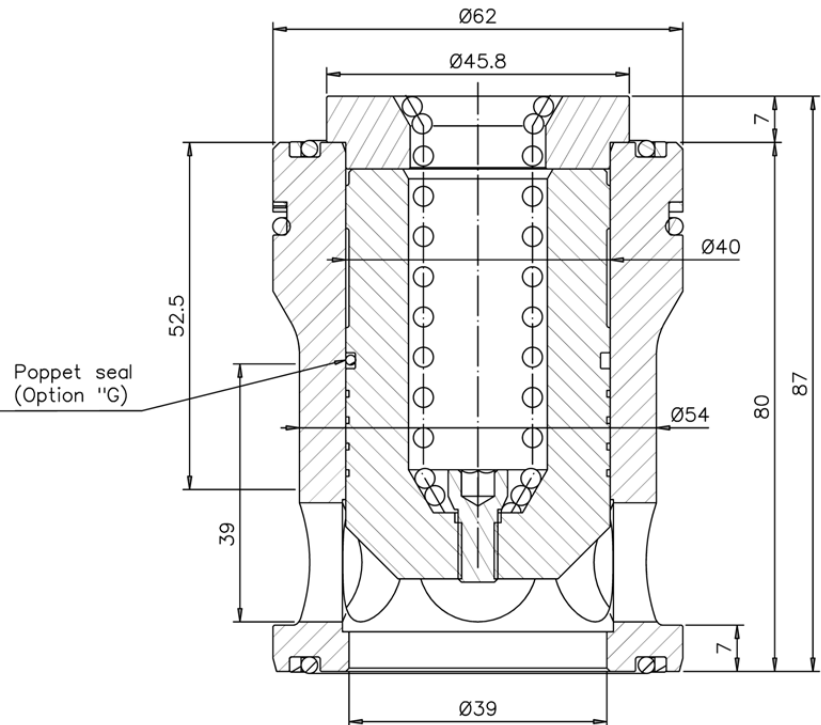
Description Normally opened poppet logic cartridges .

Overall dimensions

ICLHB – 25



ICLHB – 40



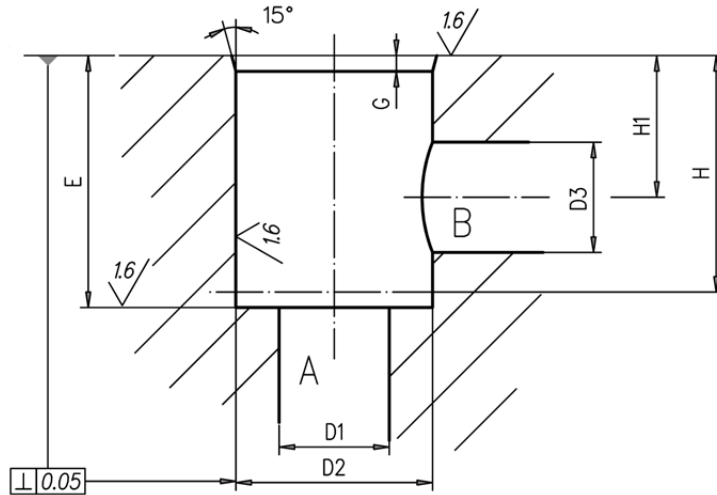
Installation rules

- The cartridges type **ICLHB**, can be mounted in any position
- Fluid to be used: hydraulic oil in compliance with DIN 51524 rules, viscosity between 30 and 100 mm²/s (cSt) at 40°C
- Recommended filtration: 25µ
- Hydraulic fluid temperature: from -20° to +75°

NORMALLY OPENED LOGIC CARTRIDGE VALVE



Cavity dimensions

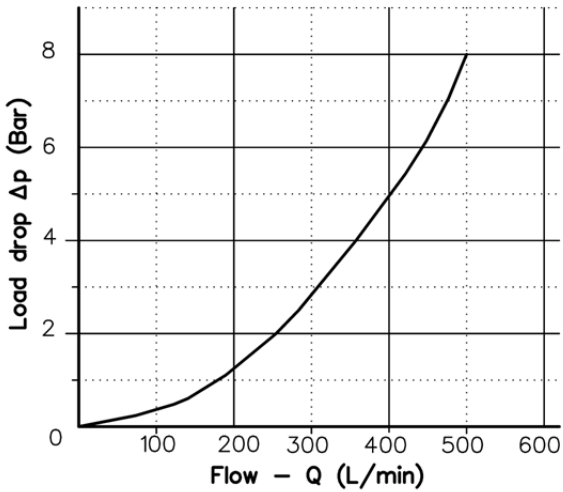


TYPE	D1 max.	D2 H8	D3 max.	E ⁻⁰ _{+0.05}	G	H (Bored part)	H1
ICLHB - 25	Ø 24	Ø 38	Ø 24	50.75	2	49	32.5
ICLHB - 40	Ø 39	Ø 62	Ø 39	80	3	78.5	52.5

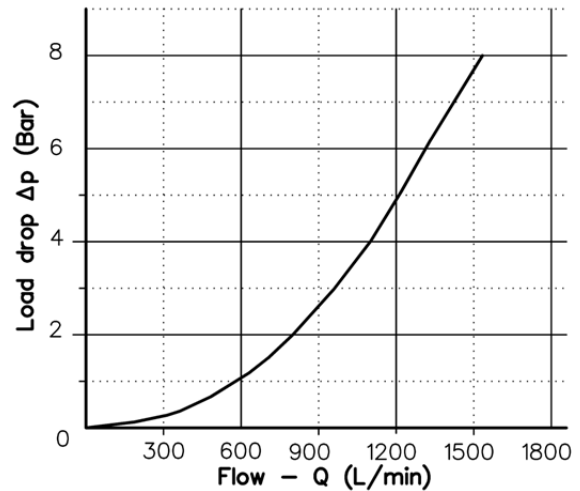
Overall flow diagrams (A → B)

(Fluid : ISO VG 46 @ 50°C)

ICLHB - 25



ICLHB - 40



Ordering code

ICLHB	-	**	111	- C	/NA	- G	**
-------	---	----	-----	-----	-----	-----	----

if omit it = NBR (standard)
 /F = FKM
 /E = EPDM
 - G = Optional poppet seal (omit if not required)
 /NA = Normally opened
 - c = Closing pressure 3 Bar
 Area ratio 111 = 1 : 1,1
 25 = DN-25
 40 = DN-40
 Normally opened logic cartridge size