

CARTRIDGE CHECK VALVE



Characteristics

TYPE	SIZE	MAX FLOW	MAX PRESSURE	CRACKING PRESSURE	LOCKING TORQUE	WEIGHT
IRR-18	1/8" Gas	10 l./min.	350 bar	0.5 bar	7 Nm	0.003 Kg
IRR-14	1/4" Gas	20 l./min.			15 Nm	0.007 Kg
IRR-38	3/8" Gas	50 l./min.			20 Nm	0.015 Kg
IRR-12	1/2" Gas	80 l./min.			40 Nm	0.023 Kg
IRR-34	3/4" Gas	120 l./min.			50 Nm	0.050 Kg

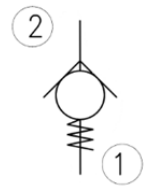
Description

The valves type IRR are screw-in, direct-acting, poppet-type, in-line check valves. They have a compact shape which makes them suitable for use in manifolds.

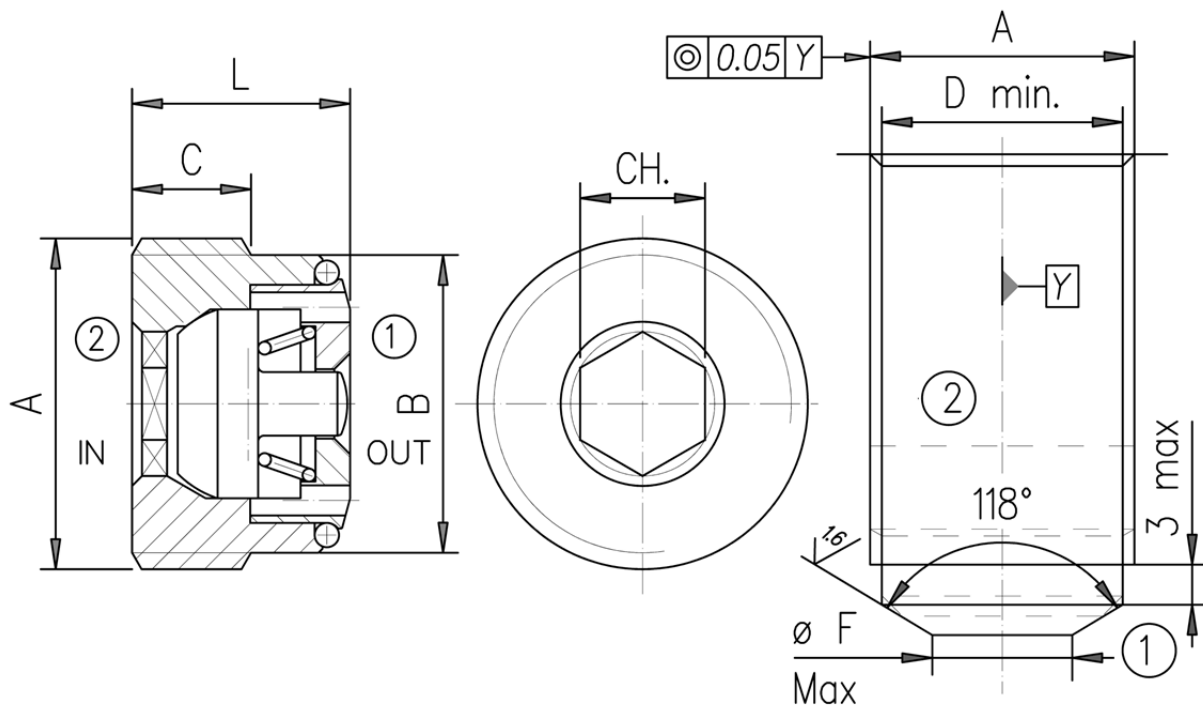
They allow oil passage from "2" to "1" and stop it in the opposite direction. The poppet and seat are hardened and ground to guarantee seal and service life. External surfaces are oxide burnished to increase the protection degree to corrosion. All the valves parts are made in high strength alloy steel. Cavity is gas (BSP).

Main use is as blocking or pressure holding device.

Symbol



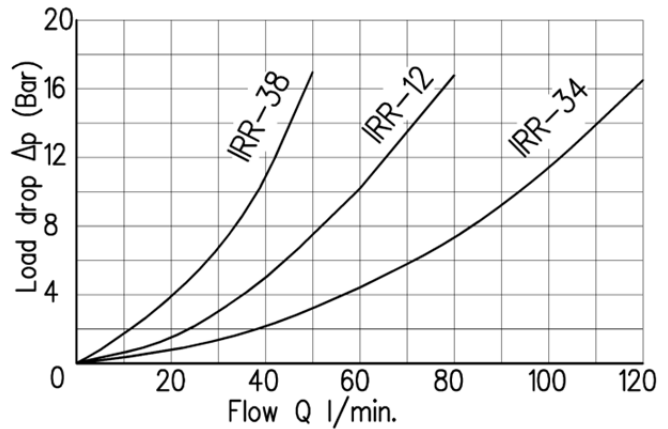
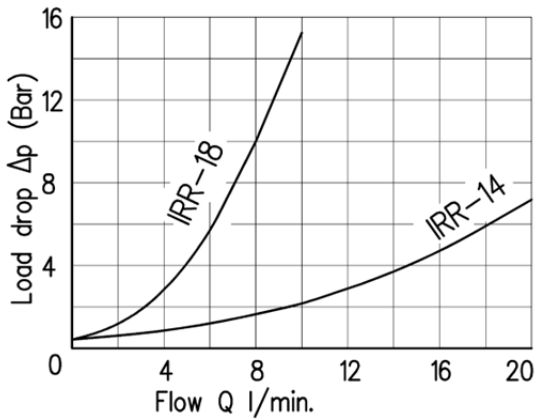
Valve cavity - Dimensions



TYPE	A	B	C	D	F	CH	L
IRR-18	1/8" Bsp	8.5	3.9	8.7	5	4	8
IRR-14	1/4" Bsp	11.5	5.5	11.6	7	6	10.2
IRR-38	3/8" Bsp	14.9	7	15.1	9	8	11.7
IRR-12	1/2" Bsp	18.7	7.9	18.8	12	10	13.5
IRR-34	3/4" Bsp	24	11.5	24.3	18	10	17.1



Diagram



Installation rules

- Installation: no orientation restrictions
- Fluid to be used: hydraulic oil in compliance with DIN 51524, viscosity between 30 and 100 mm²/s (cSt) at 40°C
- Recommended filtration: 25μ
- Hydraulic fluid temperature : from - 20° a +75°C

Ordering code

IRR - *

Size : 18=1/8"BSP 14=1/4"BSP 38=3/8"BSP 12=1/2"BSP 34=3/4"BSP

Cartridge check valve (Cracking pressure: 0,5 Bar)