

UNIDIRECTIONAL VALVE, EXPLOSION-PROOF ACCORDING TO ATEX 2014/34/UE



Characteristics

TYPE	PORT SIZE	MAX. FLOW	OPERATING PRESSURE	WEIGHT	STANDARD VOLTAGE	
VASX-**-38	3/8" BSP	40 l/min	Max. 320 Bar	Kg. 1.40	DC 12-24	Other voltages on request

Description

Unidirectional pilot operated solenoid cartridge check valves. They allow perfect sealing in one direction and flow in the opposite one, when the solenoid is energized. ON-OFF electric control. The solenoid satisfies Atex requirements:

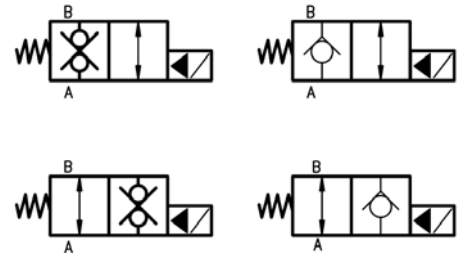
- II 2G Ex DB IIC T6/T5 Gb
- II 2D Ex Tb IIIC T85°C/T100°C Db IP66/67
- Exdb I Mb

And it's conform to :

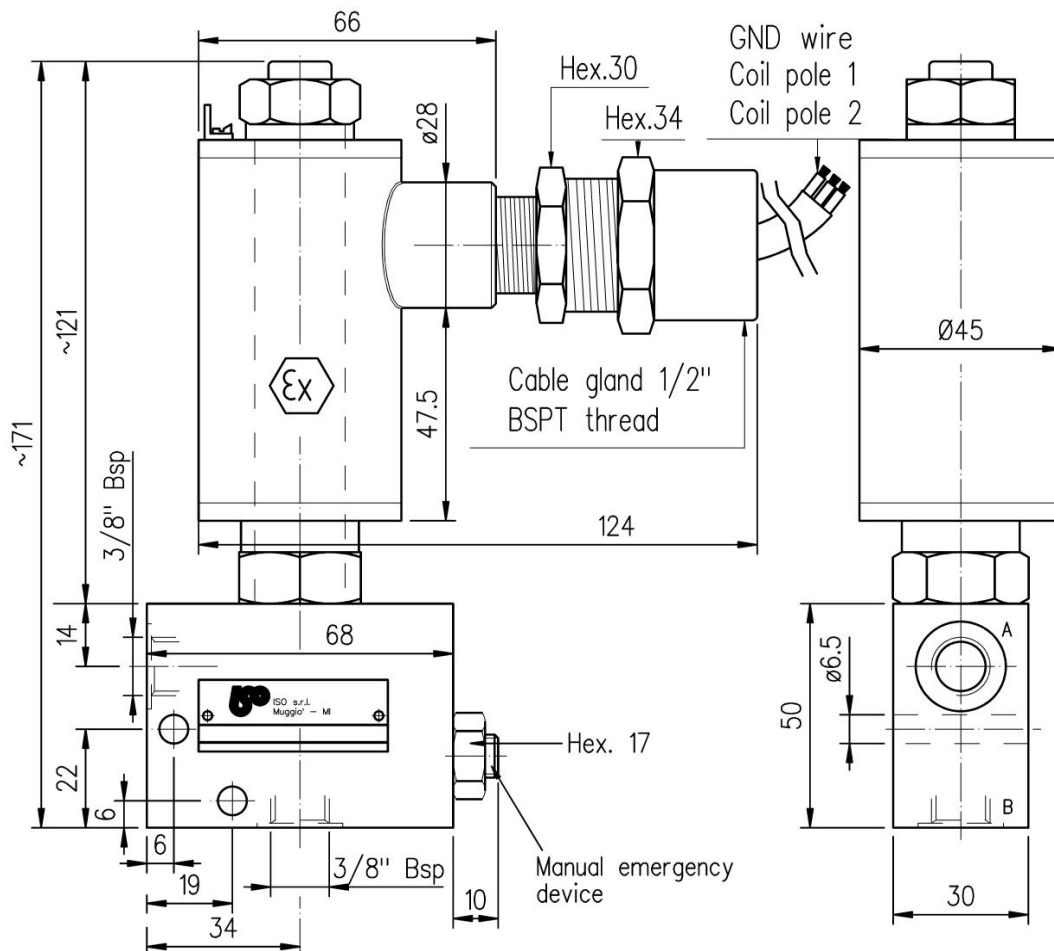
- EN 60079-0:2012 +A11:2013
- EN 60079-1:2014
- EN60079-31:2014

The flameproof solenoid can limit its surface temperature, preventing any accidental spark from igniting any combustible gas, vapours or particulates in the surrounding environment. In the meanwhile it contains any internal explosion caused by accidental presence of gas inside its housing.

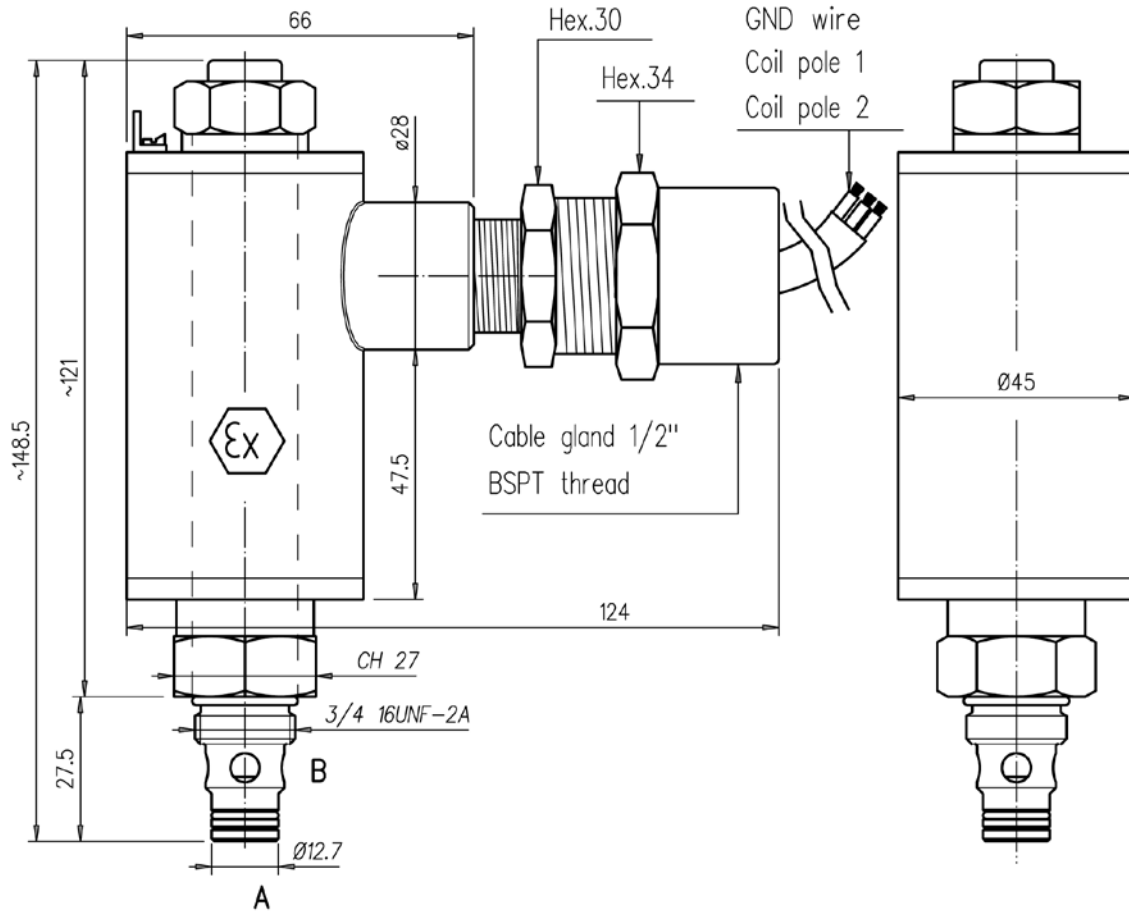
Symbol



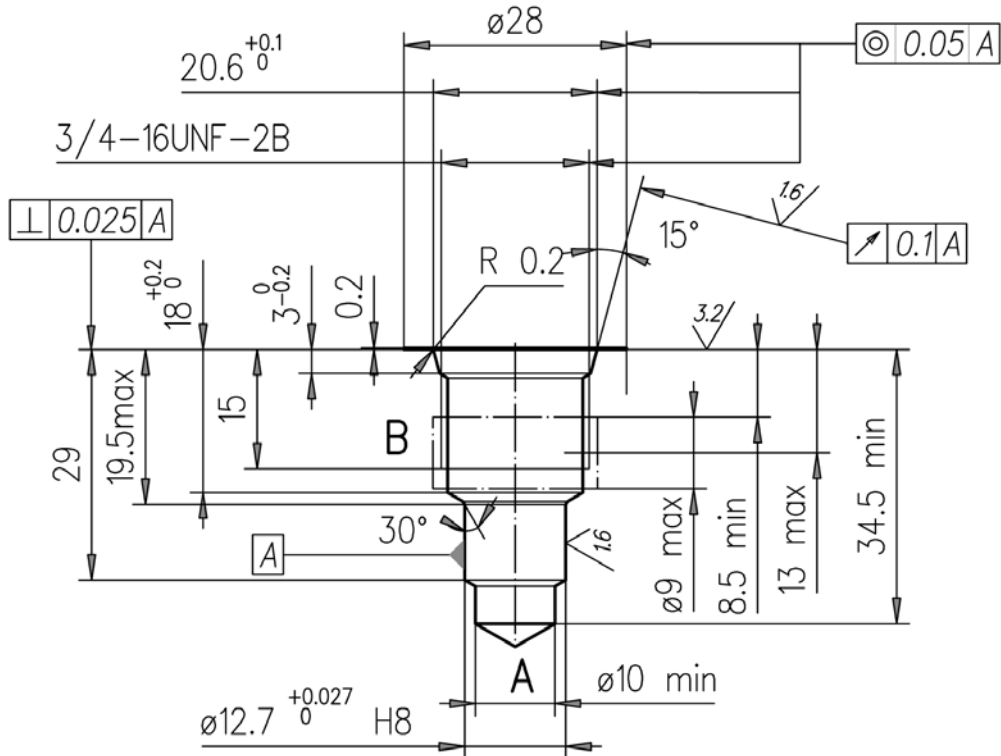
Dimensions



UNIDIRECTIONAL VALVE, EXPLOSION-PROOF ACCORDING TO ATEX 2014/34/UE



Cavity



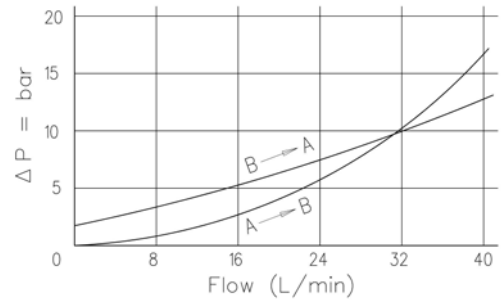
UNIDIRECTIONAL VALVE, EXPLOSION-PROOF ACCORDING TO ATEX 2014/34/UE



Installation rules

- The valves type VASX can be mounted in any position
- Fluid to be used: hydraulic oil in compliance with DIN 51524 rules, viscosity between 30 and 100 mm²/s (cSt) at 40°C
- Recommended filtration: 25µ
- Hydraulic fluid temperature: from -20° to +75°C
- Feeding voltage tolerance around -10% +5%

Diagram



Electric characteristics

Protection class IEC 144 norms	IP-67 class H
Fire-retardant power supply cable L=1500 mm	CEI 20-22

Ordering code

V A S X	-	*	-	*	*	*	-	*	*	-	*	*	*	*	*	*	*	*	*
---------	---	---	---	---	---	---	---	---	---	---	---	---	---	---	---	---	---	---	---

Unidirectional valve ,explosion-proof

C = Cartridge model

L = With In line manifold

Size :

NA = normally opened

NC = normally closed

2NA = double lock normally opened

2NC = double lock normally closed

Connections (Only for VASX-L) :

38 = 3/8 Gas

Voltage :

12DC = 12DC

24DC = 24DC

Fire-retardant power supply cable :

If omit it = 1,5 meters standard (other lengths on request)

Seals material:

If omit it = NBR (standard)

/F = FKM (temp. - 20 + 80)

/E = EPDM