

# CETOP-03 SIZE, DIRECT OPERATED, SOLENOID POPPET TYPE VALVE



## Characteristics

TYPE	P-MAX PRESSURE	T-MAX PRESSURE	MAX FLOW RECOMMENDED	WEIGHT
DES-03	350 bar	210 bar	30 l/min	1.6 Kg.

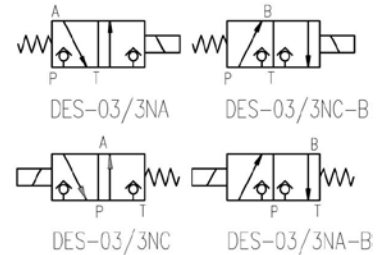
## Description

3 way directional solenoid poppet type valve, direct operated, for CETOP 03 plate-mounting.

This valve is studied for hydraulic circuits application, where leakage free is strictly required, thanks to the poppet execution combined with fine mechanical manufacturing.

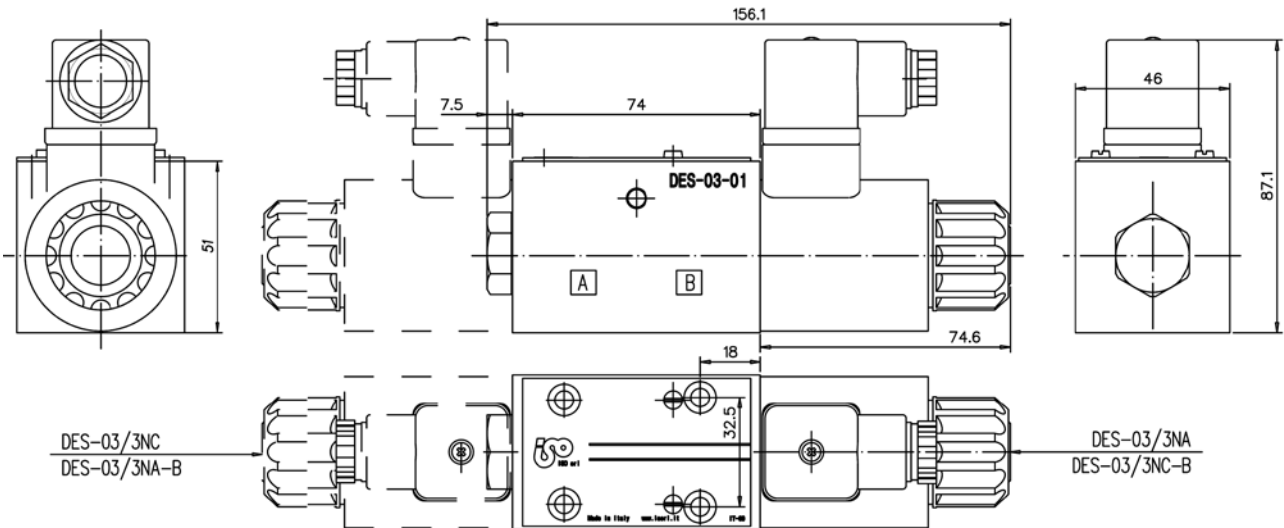
The perfect hydraulic balance makes the switching easy also with high pressures on ports.

## Symbol



## Dimensions

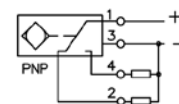
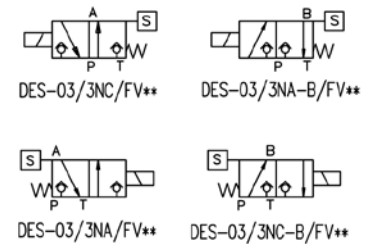
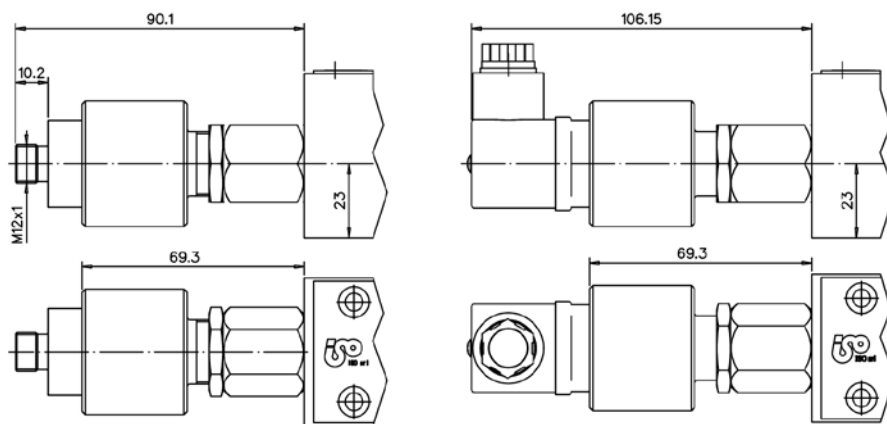
N°4 Viti TCEI M5x45



(/FV-M)

(/FV)

## Symbol



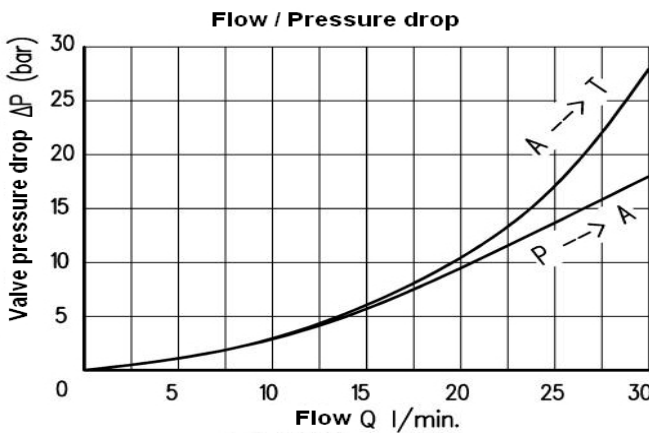
# CETOP-03 SIZE, DIRECT OPERATED, SOLENOID POPPET TYPE VALVE



## Installation rules

- The valves type DES can be mounted in any position. It is possible to orient the electric connector of coil in three positions: at 90° degree one from the other.
- Fluid to be used: hydraulic oil in compliance with DIN 51524 rules, viscosity between 30 and 100 mm<sup>2</sup>/s (cSt) at 40°C
- Recommended filtration: 25µ
- Hydraulic fluid temperature: from -20° to +75°C

## Diagram



## Electric characteristics

INDUCTIVE POSITION SWITCH	
Rated voltage ( V )	24 DC
Output	400 mA max
Temperature range ( ° C )	-20+ 80
Connector protection degree	IP-65 (with connectors DIN 43650A)
Static Oil pressure ( Mpa)	31.5

## Ordering code

DES-03/3	****	-	*****	***	**	**
----------	------	---	-------	-----	----	----

### Direct operated, solenoid poppet type valve :

**DES-03/3**

### Connection :

- NA** = Output port "A" connected to tank with de-energized solenoid
- NC** = Output port "A" connected to P with de-energized solenoid
- NA-B** = Output port "B" connected to tank with de-energized solenoid
- NC-B** = Output port "B" connected to P with de-energized solenoid

### Supply voltage :

- 12DC** = 12DC
- 24DC** = 24DC
- 48DC** = 48DC
- 110DC** = 110DC
- 220DC** = 220DC

### Sensor:

**-FV** = Proximity sensor (Otherwise omit it)

### Proximity connector:

- If omitted** = with connector DIN-43650
- M** = Metric M12x1 4-pin

### Materiale guarnizioni:

- If omitted** = NBR (standard )
- /F** = FKM
- /E** = EPDM