

PISTON PRESSURE SWITCH type IPH



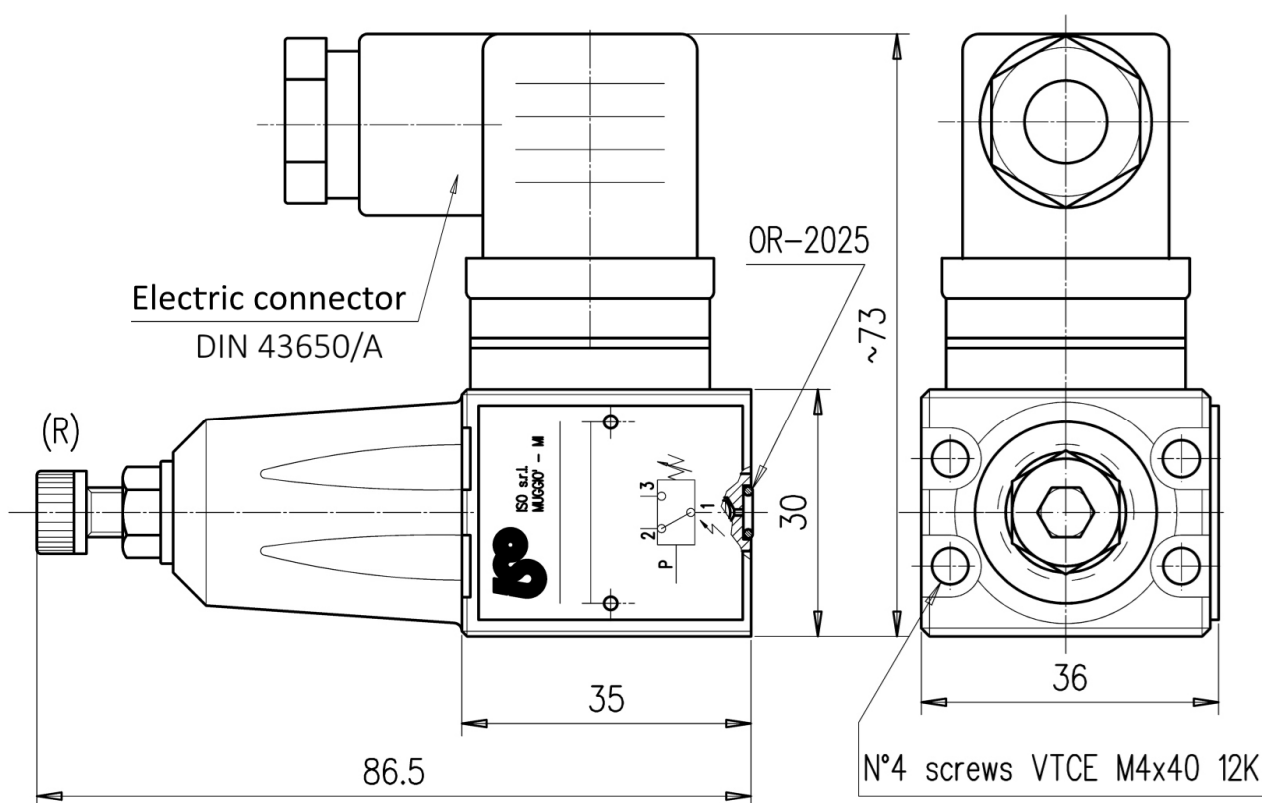
Characteristics

| TYPE | PRESSURE SETTING RANGE | MAX WORKING PRESSURE | REPEATABILITY | WEIGHT |
|---------|------------------------|----------------------|-------------------|----------|
| IPH-035 | 6-35 bar | 250 bar | < ± 1% of setting | 0.35 Kg. |
| IPH-150 | 12-150 bar | | | |
| IPH-250 | 15-250 bar | 650 bar | | |
| IPH-350 | 30-350 bar | | | |
| IPH-630 | 50-630 bar | | | |

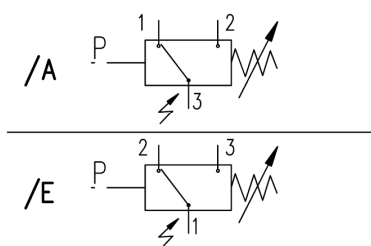
Description

Piston operated, fixed differential, electro-hydraulic pressure switch equipped with electric contact in exchange. When pre-set pressure is achieved, the piston actuates a microswitch. The setting adjustment is achieved by means of a grub screw (R).

Dimensions

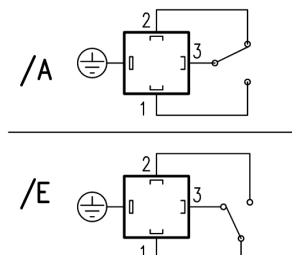


Symbol

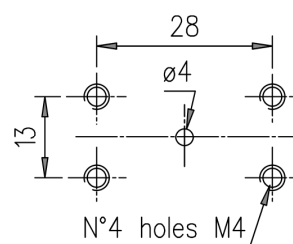


Contacts

Pressure operated position



Flange interface



PISTON PRESSURE SWITCH type IPH

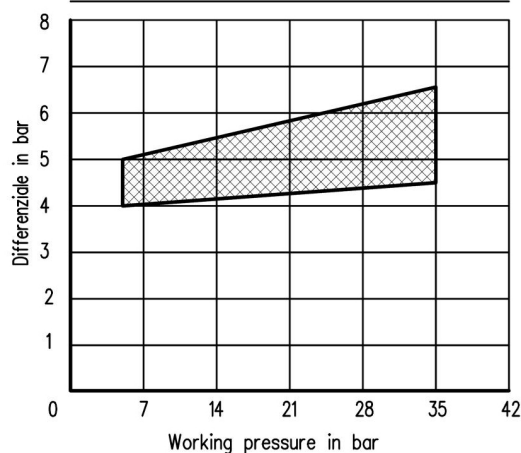


Electric characteristics

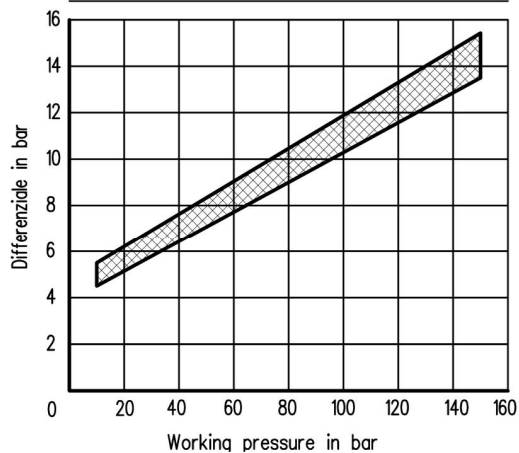
| | | | | |
|--|---|---------------|--------------|---------------|
| Voltage (V) | 125 AC | 250 AC | 30 DC | 150 DC |
| Max current (Resistive load) | 7 Amp. | 5 Amp. | 5 Amp. | 0.2 Amp. |
| Max current (Inductive load) $\text{Cos } \varphi = 0.4$ | 4 Amp. | 2 Amp. | 3 Amp. | 0.02 Amp. |
| Connection frequency | Max. 120 cycles/min | | | |
| Protection | IP-65 | | | |
| Direct current with inductive load | It is suggested to provide an arching contact | | | |
| Contact resistance | 15 m Ω | | | |

Diagram

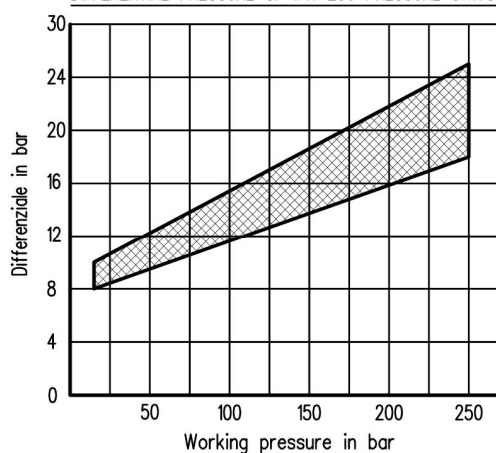
DIFFERENTIAL PRESSURE OF IPH-35 PRESSURE SWITCH



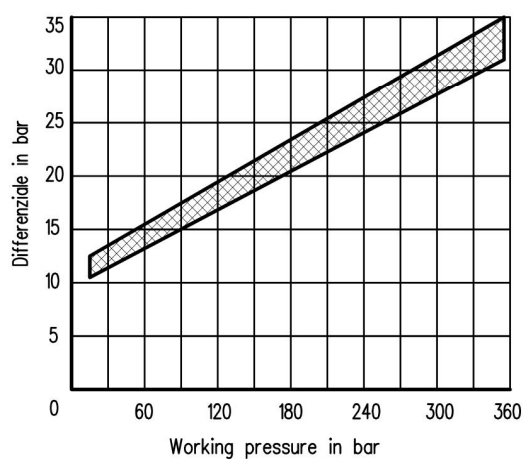
DIFFERENTIAL PRESSURE OF IPH-150 PRESSURE SWITCH



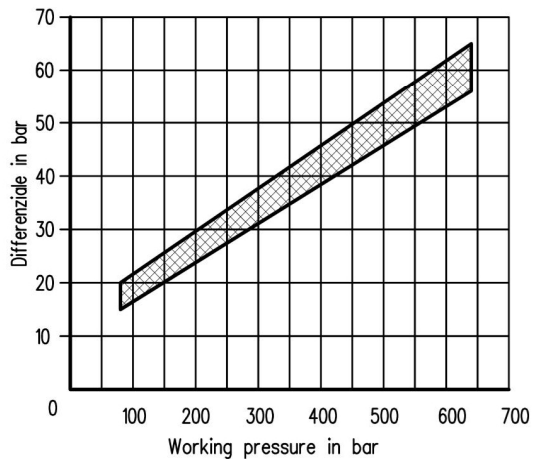
DIFFERENTIAL PRESSURE OF IPH-250 PRESSURE SWITCH



DIFFERENTIAL PRESSURE OF IPH-350 PRESSURE SWITCH



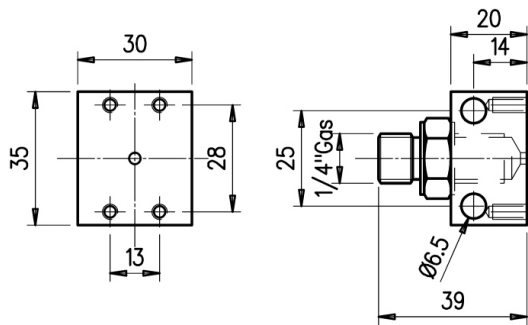
DIFFERENTIAL PRESSURE OF IPH-630 PRESSURE SWITCH





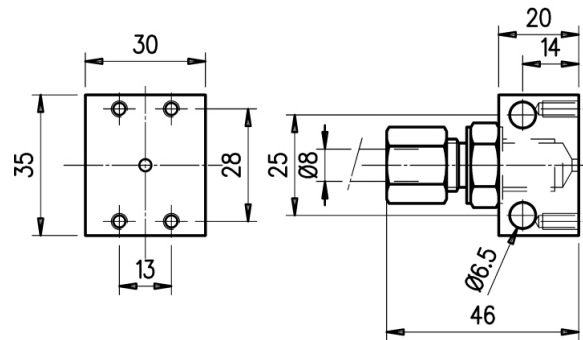
Adaptor

APM-14



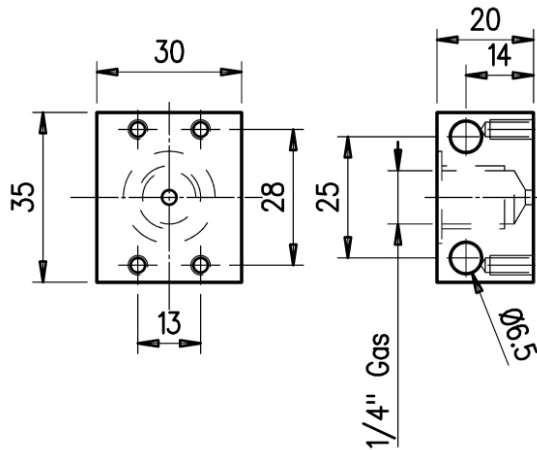
It allows the pressure switch mounting:
 - panel-mounted adaptor by using n.2 \varnothing 6.5 holes
 - equipped with 1/4" BSP nipple

APM-14-1/4x8



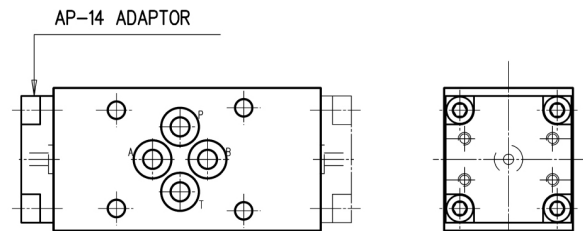
It allows the pressure switch mounting:
 - panel-mounted adaptor by using n.2 \varnothing 6.5 holes
 - equipped with 1/4" BSP tang for \varnothing 8 hose

APH-14



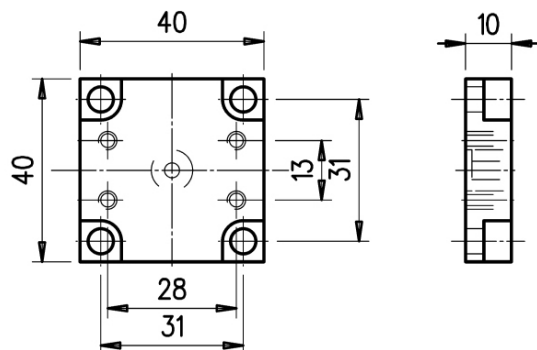
It allows the pressure switch mounting: panel-mounted adaptor by using n.2 \varnothing 6.5 holes.

SBM-03/210-IP-**



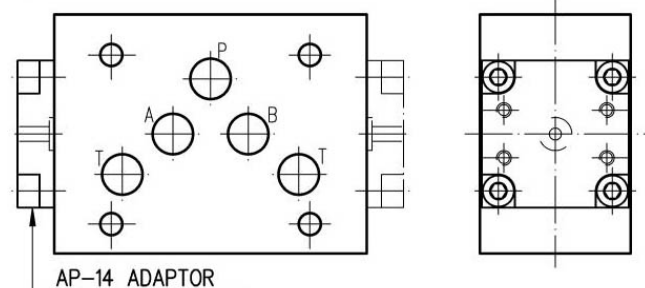
When you order, replace the asterisks with the port/ports on which the device will be mounted.
 Es. SBM-03/210-IP-B = Pressure switch operating on B port.

AP-14



It allows the pressure switch mounting:
 - as a replacement of pressure switches type IP
 - together with modular subplate type SBM (see on side)

SBM-05/210-IP-**



When you order, replace the asterisks with the port/ports on which the device will be mounted.
 Es. SBM-05/210-IP-B = Pressure switch operating on B port.

