

FILLING VALVE WITH DECOMPRESSION



Characteristics

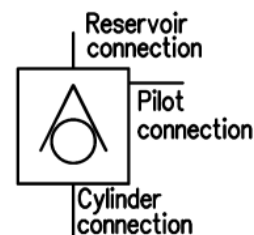
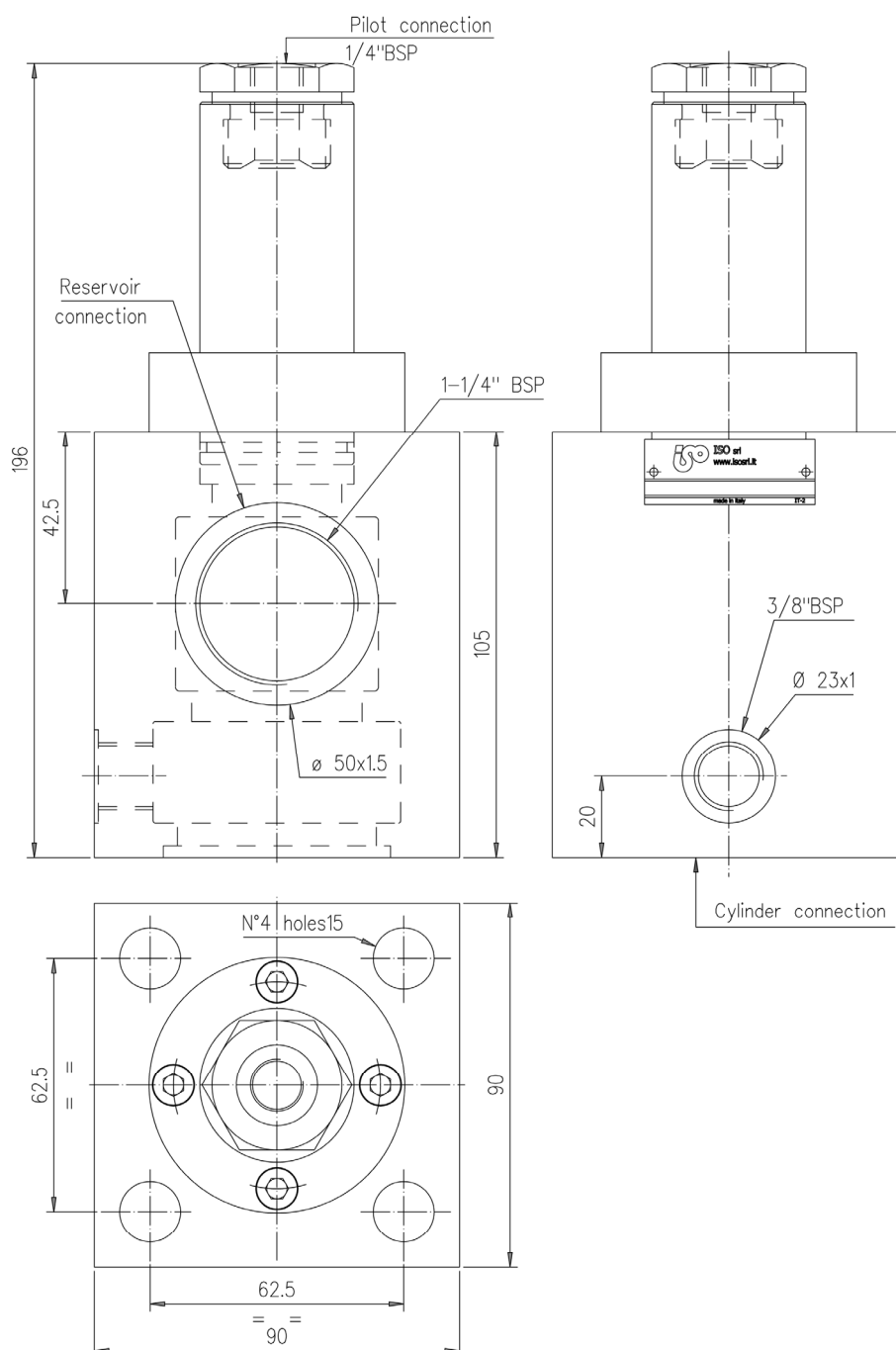
TYPE	NOMINAL DIAMETER	PRESSURE	MAX SUCTION FLOW	PILOTING RATIO	DECOMPRESSION PRESSURE	MAX PILOT PRESSURE	WEIGHT
DN 40	40 mm.	300 bar	160 lt./min.	4:1	1:7	100 bar	5.4 Kg

Description

Cylinders quick filling and discharging valves equipped with pre-opening device.

Dimensions

Symbol

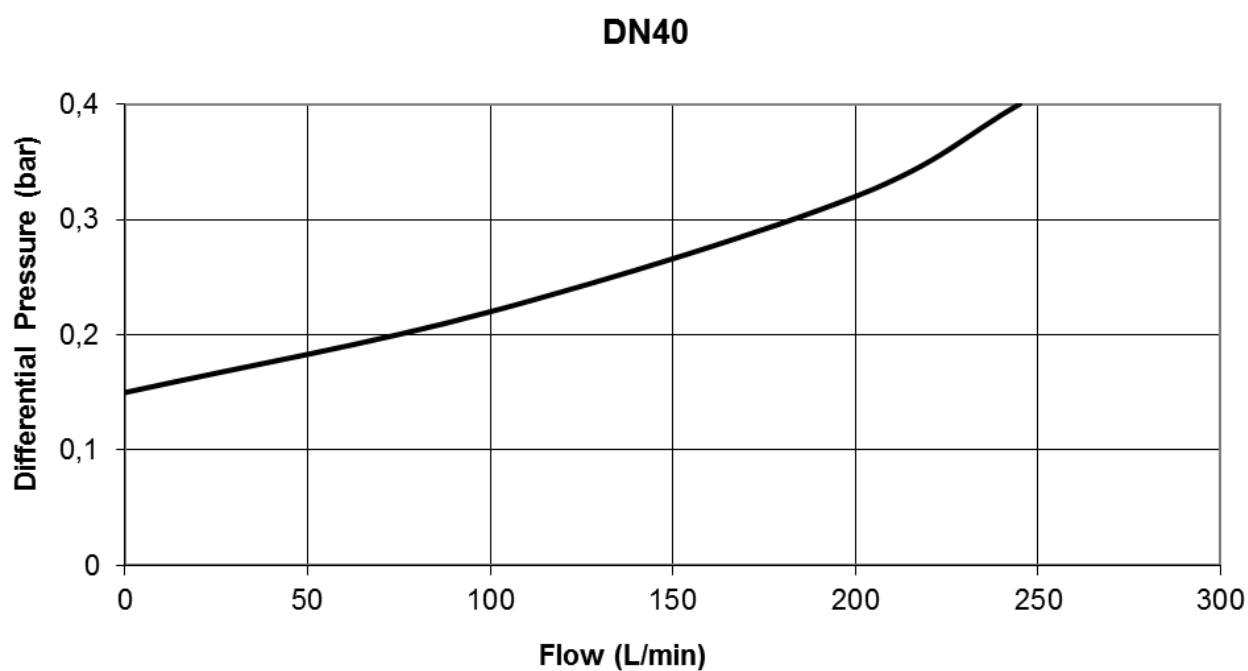




Installation rules

- The valves type DN can be mounted in any position
- Fluid to be used: hydraulic oil in compliance with DIN 51524 rules, viscosity between 30 and 100 mm²/s (cSt) at 40°C
- Recommended filtration: 25μ
- Hydraulic fluid temperature: from -20° to +75°C

Diagram



Ordering code

DN-40

DN-40 quick filling and discharging valves