

SHUTTLE VALVE



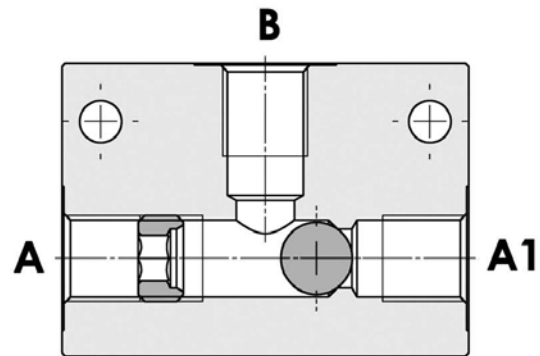
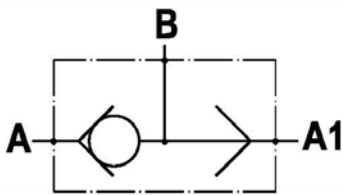
Characteristics

TIPO	Max. flow	Max. pressure	Weight
IPT - 14	25 l/min	320 bar	0.5 Kg.
IPT - 38	50 l/min		0.5 Kg.
IPT - 12	80 l/min		1.5 Kg.
IPT - 34	110 l/min		1.5 Kg.

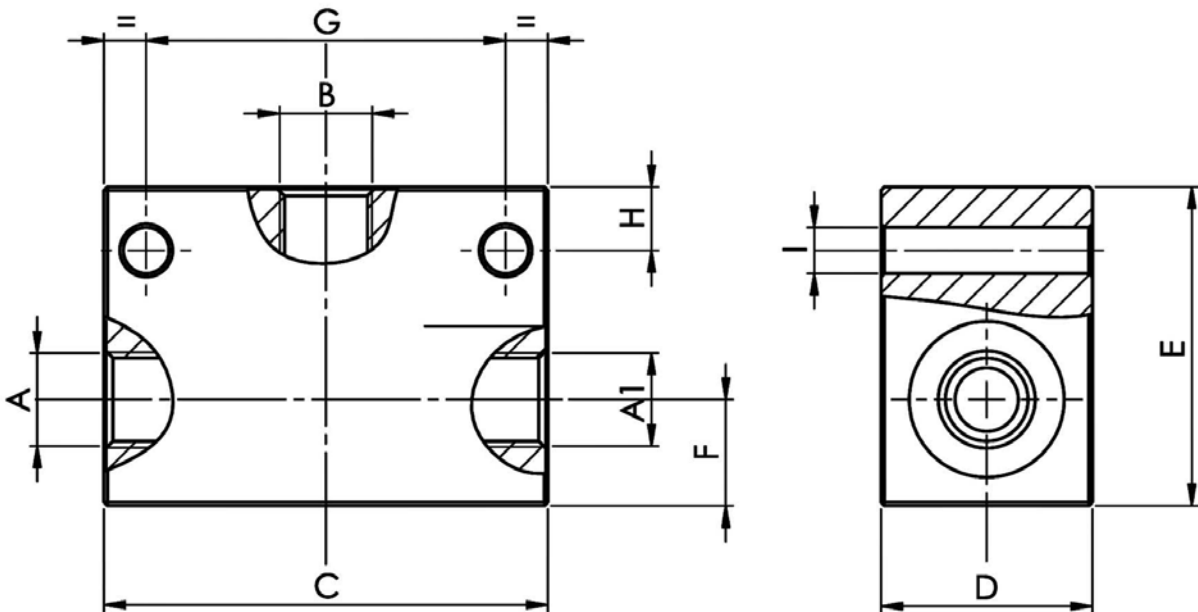
Description

In line bi-stable valve. The body is made of heat-treated steel . The external surface is zinc plated.

Symbol



Dimensions



TYPE	A - A1 - B	C	D	E	F	G	H	I
	Bsp	mm	mm	mm	mm	mm	mm	mm
IPT - 14	1/4"	63	30	45	15	51	9	6.5
IPT - 38	3/8"							
IPT - 12	1/2"	90	40	60	20	75	7.5	8.5
IPT - 34	3/4"							

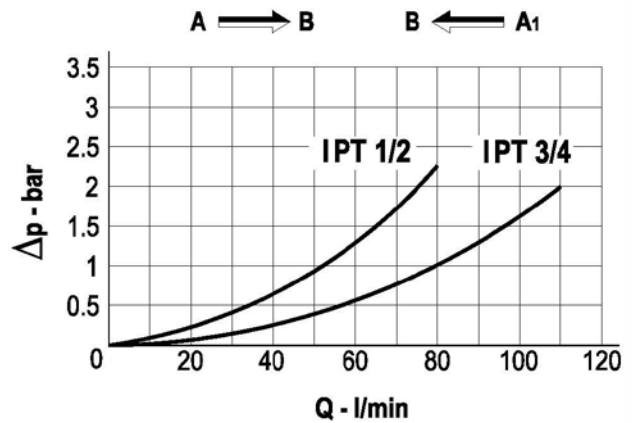
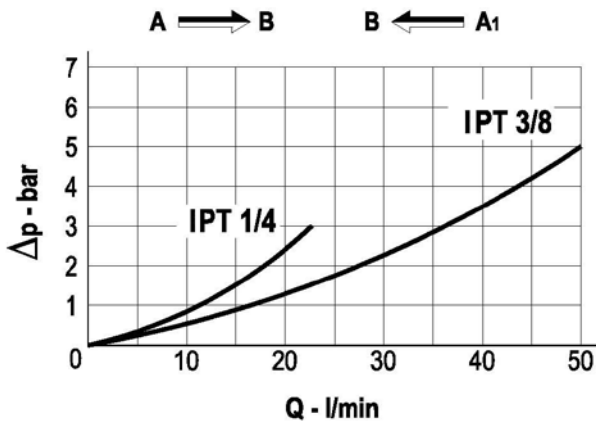


Installation rules

- The valves type IPT can be mounted in any position
- Fluid to be used: hydraulic oil in compliance with DIN 51524 rules, viscosity between 30 and 100 mm²/s (cSt) at 40°C
- Recommended filtration: 25μ
- Hydraulic fluid temperature: from -20° to +80°C

Diagram

Pressure drop curves
Oil viscosity 24 mm²/sec (3.5° E) temperature 50°C



Ordering code

IPT - ***	
14 = 1/4" BSP	
38 = 3/8" BSP	
12 = 1/2" BSP	
34 = 3/4" BSP	
SHUTTLE VALVE	