

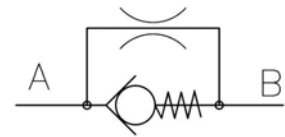
IN LINE CHECK VALVE EQUIPPED WITH CALIBRATED HOLE



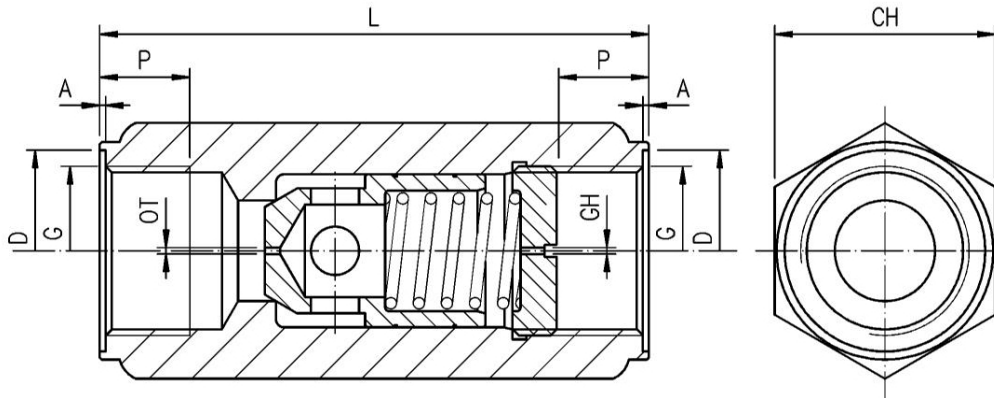
Characteristics

Symbol

TYPE	MAX FLOW	MAX PRESSURE
VR-38/*/*/*	30 l/min.	400 bar



Dimensions



CODE	A	Ch.	D	G	L	P	SPRING	Ø OT	Ø GH
							(Bar)	(mm)	(mm)
VR-38/0							0,5	Standard	Standard
VR-38/8							8	Standard	Standard
VR-38/8/0/30							8	Standard	3
VR-38/2/8/15							2	0,8	1,5
VR-38/2/9/15							2	0,9	1,5
VR-38/2/10/15							2	1	1,5
VR-38/2/12/25							2	1,25	2,5
VR-38/2/15/25							2	1,5	2,5
VR-38/2/17/25							2	1,75	2,5
VR-38/2/20/25							2	2	2,5
VR-38/2/22/25							2	2,25	2,5
VR-38/2/25/30							2	2,5	3
VR-38/2/8/0							2	0,8	Standard
VR-38/2/9/0							2	0,9	Standard
VR-38/2/10/0							2	1	Standard
VR-38/2/12/0	1	27	23	3/8" BSP	70	11	2	1,25	Standard
VR-38/2/15/0							2	1,5	Standard
VR-38/2/17/0							2	1,75	Standard
VR-38/2/20/0							2	2	Standard
VR-38/2/22/0							2	1,25	Standard
VR-38/2/25/0							2	2,5	Standard
VR-38/2/27/0							2	2,75	Standard
VR-38/2/30/0							2	3	Standard
VR-38/2/10/25							2	1	2,5
VR-38/2/15/15							2	1,5	1,5
VR-38/2/12/15							2	1,25	1,5
VR-38/0/12							0,5	1,25	Standard
VR-38/0/15							0,5	1,5	Standard
VR-38/0/22							0,5	2,25	Standard
VR-38/0/10							0,5	1	Standard
VR-38/0/20							0,5	2	Standard
VR-38/2/25/30							2,0	2,5	3

IN LINE CHECK VALVE EQUIPPED WITH CALIBRATED HOLE



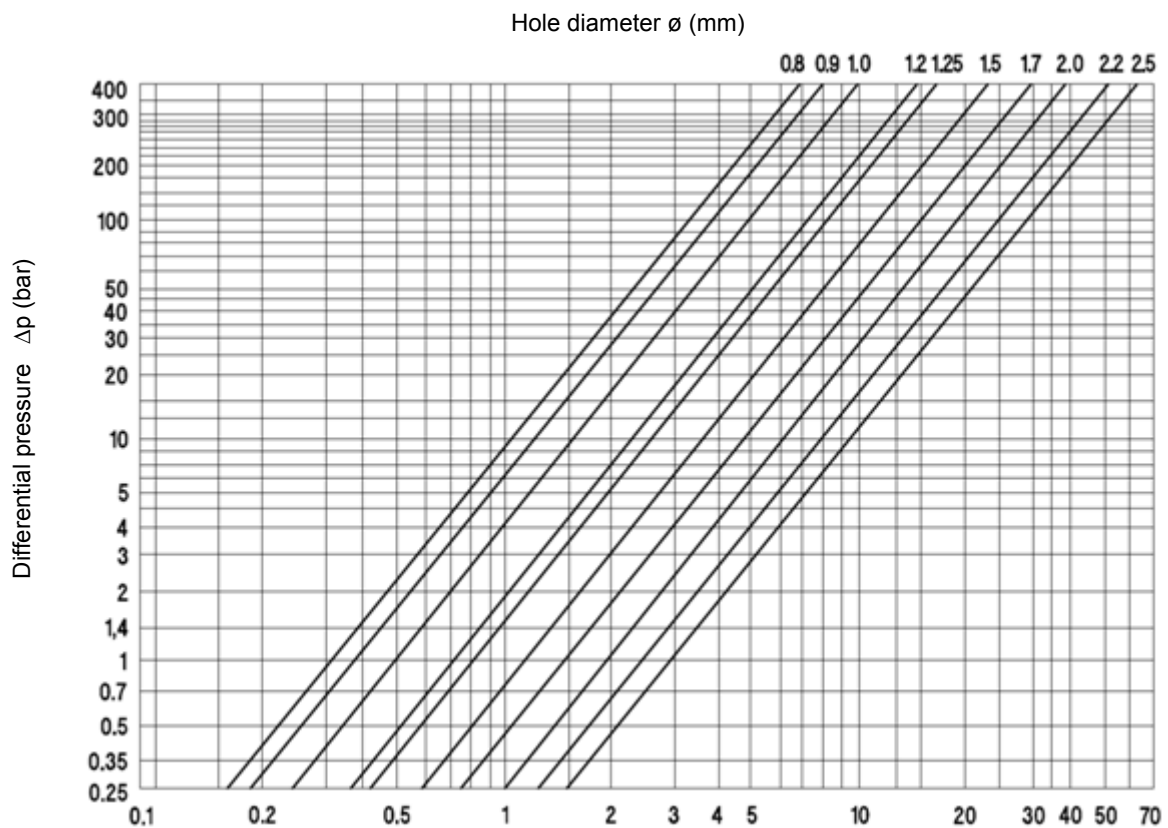
Description

The VR- 38 are direct operated check valves, suitable for in-line mounting. The special execution with calibrated orifice made in the valve poppet allows a free flow (fast speed) in one direction (A - B) and a controlled flow in the opposite one (B - A).

The controlled flow depends on the selected orifice diameter.

Installation rules

- The valves type VR can be mounted in any position
- Fluid to be used: hydraulic oil in compliance with DIN 51524 rules, viscosity between 30 and 100 mm²/s (cSt) at 40°C
- Recommended filtration: 25µ
- Hydraulic fluid temperature: from -20° to +80°C



Ordering code

