

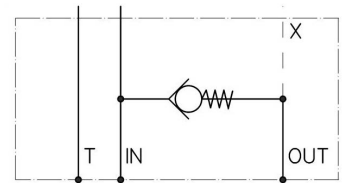
SUBPLATE EQUIPPED WITH CHECK AND THREADED PORTS FOR CETOP-06/R AND CETOP-08/R SIZE VALVES



Characteristics

Symbol

TYPE	CRACKING PRESSURE	PRESSURE	WEIGHT
SBRF- 06/R	4 bar	350 bar	4.8 Kg.
SBRF- 08/R	0.5 bar	350 bar	6.5 Kg.



Description

Subplate equipped with check for CETOP-06R and CETOP-08R cut-off valve assembly.

Dimensions

CETOP-06/R

