

CETOP-03 SIZE, SOLENOID OPERATED MODULAR CHECK VALVE



Characteristics

TYPE	STANDARD VOLTAGE	MAX FLOW	MAX PRESSURE	WEIGHT
IRE-03/*	12DC 24DC 110RAC	40 lt/min	Galvanized steel	1,2 Kg.
	Other voltages on request		350 bar	

Description

Cetop-03, solenoid operated on A, B, P or A B ports, modular check valve

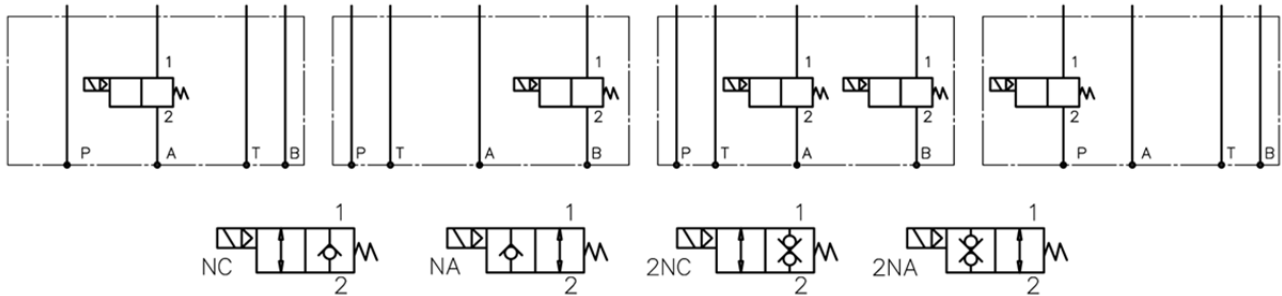
Symbol

Type IRE-03/***-A

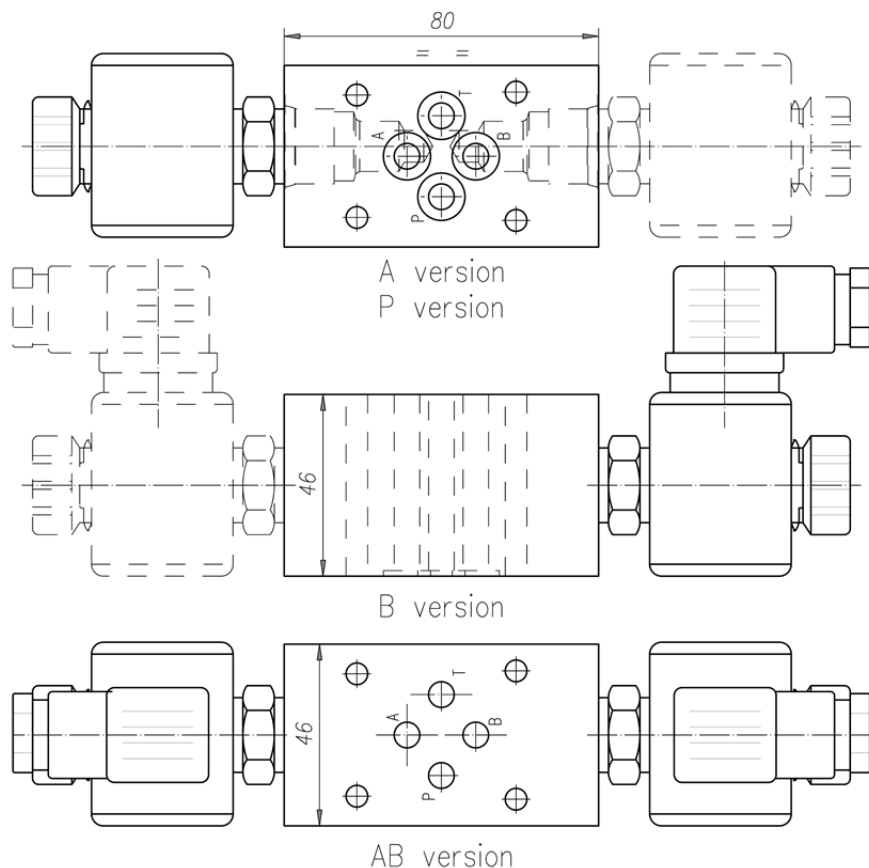
Type IRE-03/***-B

Type IRE-03/***-AB

Type IRE-03/***-P



Dimensions



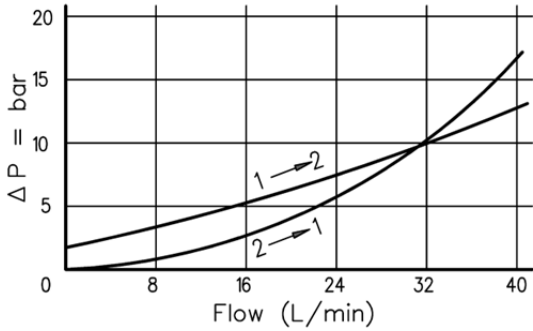
Installation rules

- The valves type IRE can be mounted in any position
- Fluid to be used: hydraulic oil in compliance with DIN 51524 rules, viscosity between 30 and 100 mm²/s (cSt) at 40°C
- Recommended filtration: 25µ
- Hydraulic fluid temperature: from -20° to +75°C
- Feeding voltage tolerance : -10% +5%

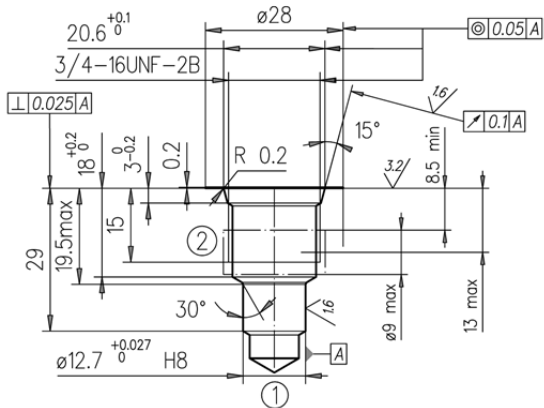
CETOP-03 SIZE, SOLENOID OPERATED MODULAR CHECK VALVE



Diagram



Cavity



Coils : (values -10% +5%)

	Nominal voltage (V)	Resistance at T 20°C (Ω)	Current consumption (A)	Power consumption (W)
12DC	12	7.2	1.67	20
24DC	24	28.8	0.85	20
110RAC	110	535	0.19	20

Ordering code

IRE-03 / * * * - * * - * * * * * * * *

Cetop-03 size, solenoid operated modular valve

IRE-03

Type :

NA = Normally open

NC = Normally closed

2NA = Double Lock Normally open

2NC = Double Lock Normally closed

Connection :

A = check on A port

B = check on B port

P = check on P port

AB = check on AB ports

Supply voltage :

12DC = 12DC

24DC = 24DC

110RC = 110RAC

Other voltage on request

Command :

If omitted = without manual control

/WP = manual emergency control

/WPK = manual emergency control with mechanical retention