

CETOP-07 MODULAR CHECK VALVE



Characteristics

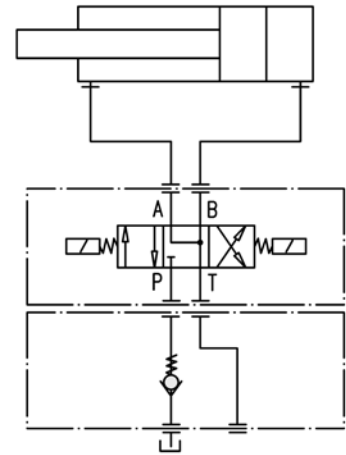
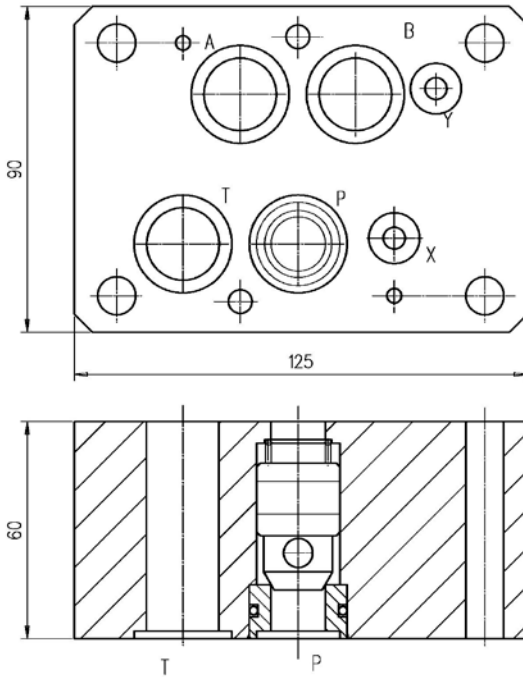
| TYPE | FLOW | PRESSURE | WEIGHT |
|-----------|-----------|----------|---------|
| IRM-07/P | 200 l/min | 320 bar | 5 Kg. |
| IRM-07/T | 200 l/min | 320 bar | 5 Kg. |
| IRM-07/AB | 200 l/min | 315 bar | 5.9 Kg. |

Description Cetop-07 size modular mounting check valve.

Dimensions

Type IRM-07/P

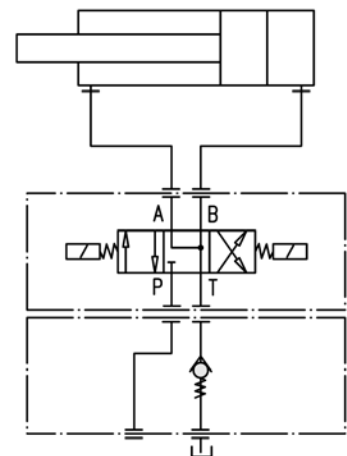
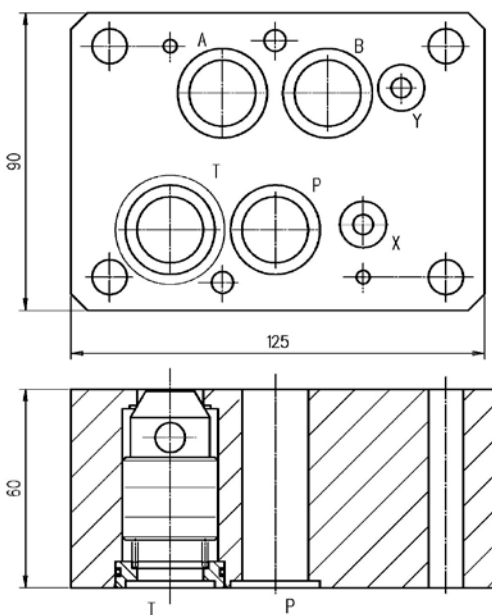
Symbol



Dimensions

Type IRM-07/T

Symbol



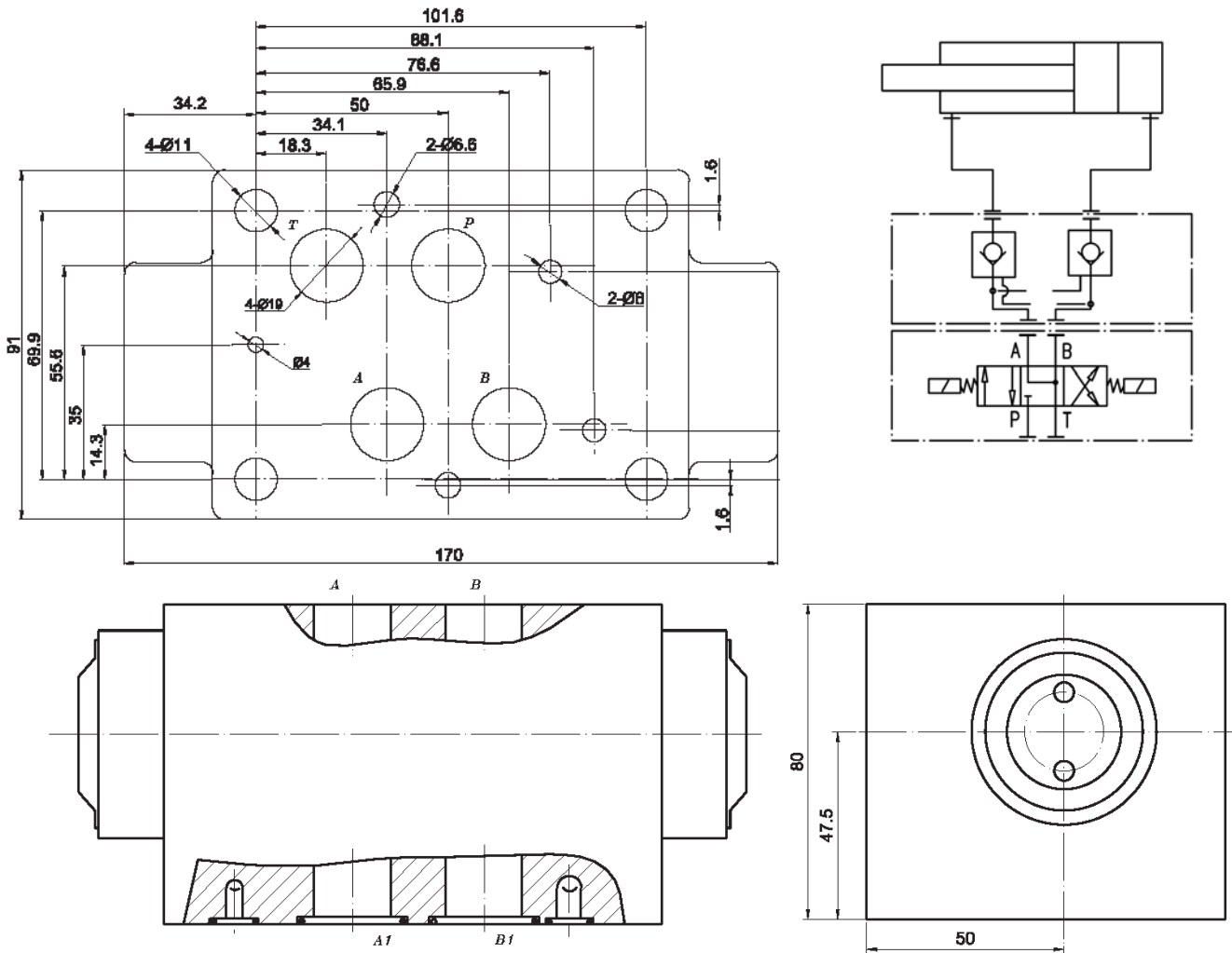
CETOP-07 MODULAR CHECK VALVE



Dimensions

Type IRM-07/AB

Symbol



Pilot ratio:

- Main valve 2.7 :1
- Pre - opening 18.4 :1

Installation rules

- The valves type IRM can be mounted in any position
- Fluid to be used: hydraulic oil in compliance with DIN 51524 rules, viscosity between 30 and 100 mm²/s (cSt) at 40°C
- Recommended filtration of 25µ
- Hydraulic fluid temperature: from -20° to +75°C

Ordering code

IRM-07 / *

P = check on P port T = check on T port AB = check on A and B port

CETOP 07 size modular check valve