

CETOP-05 SIZE PILOT-OPERATED MODULAR CHECK VALVE



Characteristics

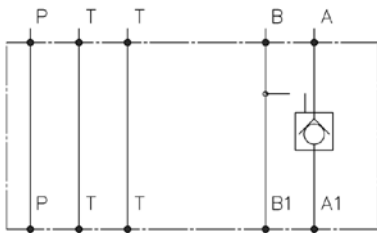
TYPE	SPRING	MAX PRESSURE	WEIGHT
IRME-05/*	2 bar	320 bar	3,1 Kg.

Description

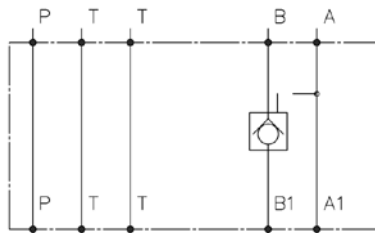
Cetop-05 size, pilot-operated modular check valve. Single on A or B ports, double on AB ports.

Symbol

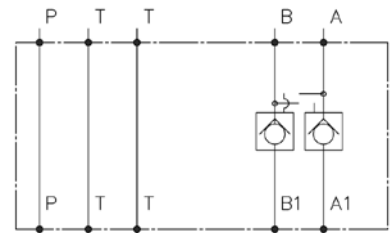
Type IRME-05/A



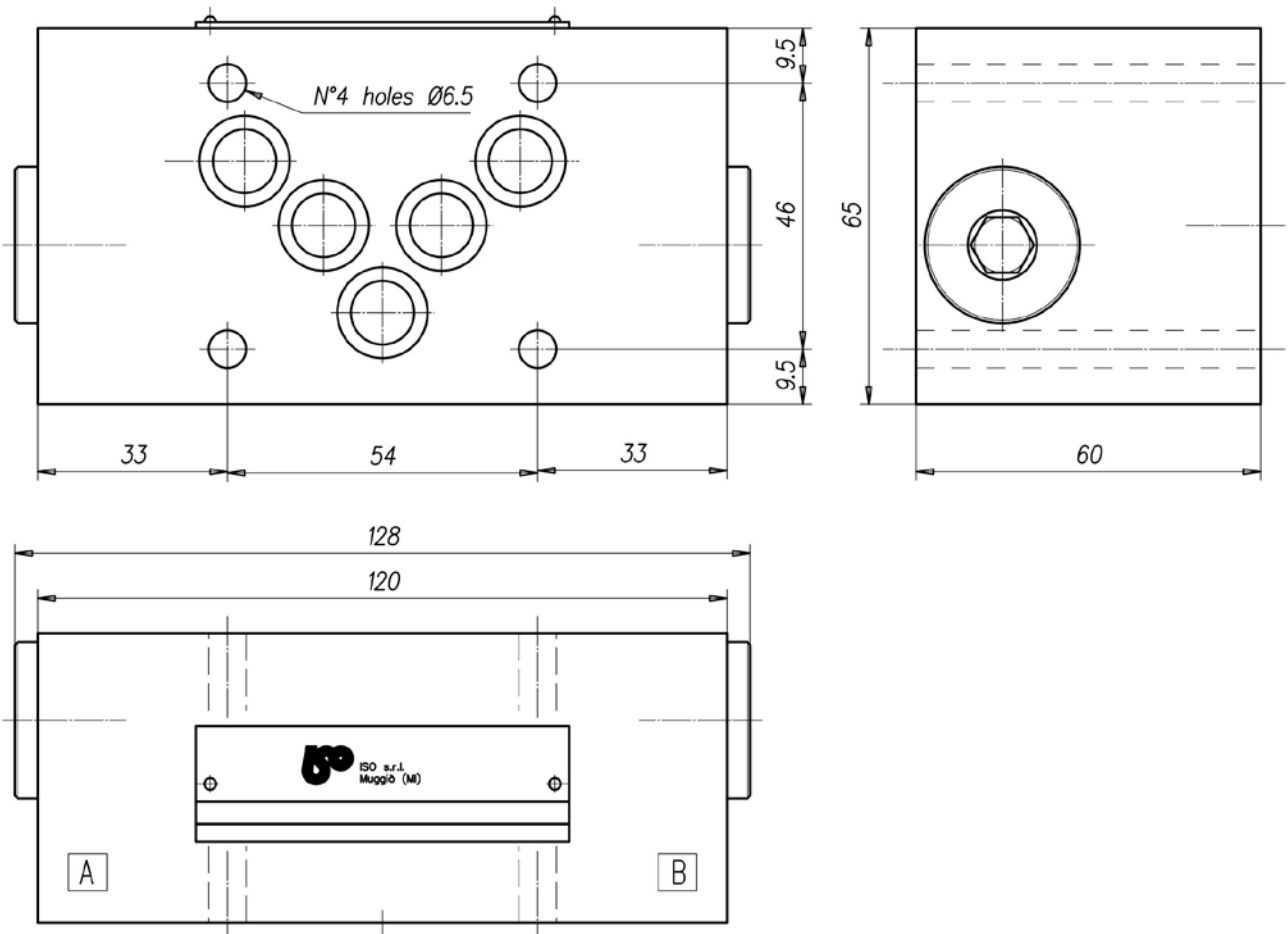
Type IRME-05/B



Type IRME-05/AB



Dimensions



CETOP-05 SIZE PILOT-OPERATED MODULAR CHECK VALVE



Piloting pressure

To shift the pilot piston and to open the check in A the piloting pressure must be, at B:

$$P_p = P_b = \frac{P_{a1} + P_m - P_a}{5,6} + P_a$$

Where: **P_p** = piloting pressure;

P_b = pressure in B;

P_a = pressure in A;

P_{a1} = pressure in A1;

P_m = check valve opening pressure (spring)

Or to open the check in B:

$$P_p = P_a = \frac{P_{b1} + P_m - P_b}{5,6} + P_b$$

Installation rules

- The valves type IRME can be mounted in any position
- Fluid to be used: hydraulic oil in compliance with DIN 51524 rules, viscosity between 30 and 100 mm²/s (cSt) at 40°C
- Recommended filtration of 25μ
- Hydraulic fluid temperature: from -20° to +75°C

Ordering code

IRME-05 / *

A=check on A port B=check on B port AB=check on AB port

CETOP- 05 size modular check valve