

# CETOP-03 SIZE, PILOT-OPERATED OPENING, MODULAR CHECK VALVE



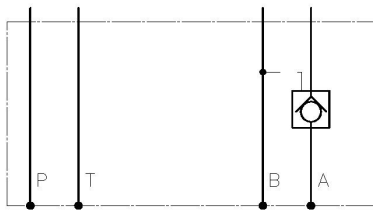
## Characteristics

TYPE	SPRING	MAX PRESSURE	WEIGHT
IRME-03/*	1,5 ÷ 3 bar	350 bar	1,1 Kg.

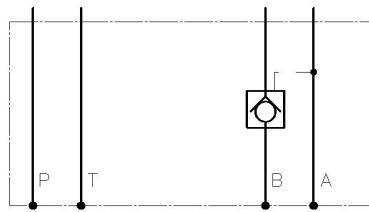
**Description** Cetop-03 size modular check valve on A,B or AB ports.

## Symbol

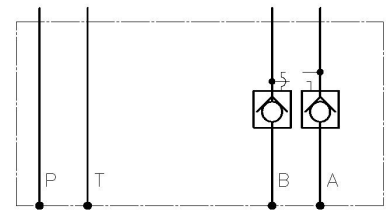
*Type IRME-03/A*



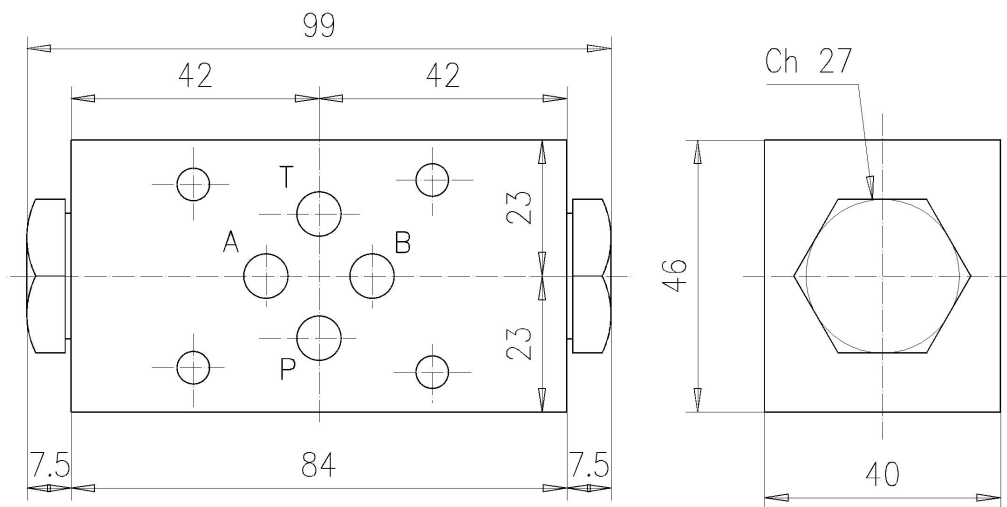
*Type IRME-03/B*



*Type IRME-03/AB*



## Dimensions



## Installation rules

- The valves type IRME can be mounted in any position
- Fluid to be used: hydraulic oil in compliance with DIN 51524 rules, viscosity between 30 and 100 mm<sup>2</sup>/s (cSt) at 40°C
- Recommended filtration of 25µ
- Hydraulic fluid temperature: from -20° to +75°C

## Ordering code

IRME-03 / \*  
 A=check on A port    B=check on B port    AB=check on AB ports  
 CETOP 03 size modular check valve