

PILOT-OPERATED OPENING, IN-LINE, CHECK VALVE



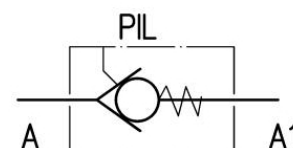
Characteristics

TYPE	MAX FLOW	MAX PRESSURE	OPENING PRESSURE	PILOT RATIO	WEIGHT
FPS-14	12 l/min.	350 bar	0.5 bar	1 : 9.0	0.7 Kg
FPS-38	30 l/min.	310 bar		1 : 6.0	0.8 Kg
FPS-12	45 l/min.	310 bar		1 : 4.5	1 Kg
FPS-34	85 l/min.	300 bar		1 : 3.7	2 Kg

Description

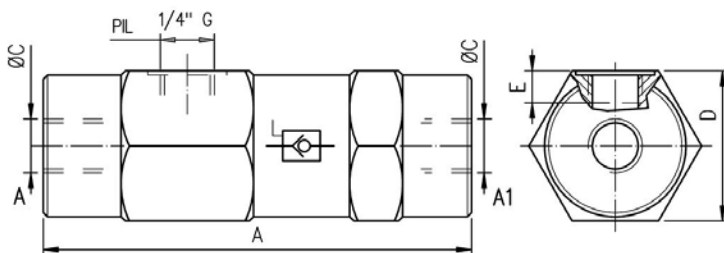
Check valves with pilot-operated opening. The opening of the valve is achieved by giving pressure to PP pressure pilot. They are available for flows up to 85 Lt./min. and pressure up to 350 bar according to the models.

Symbol



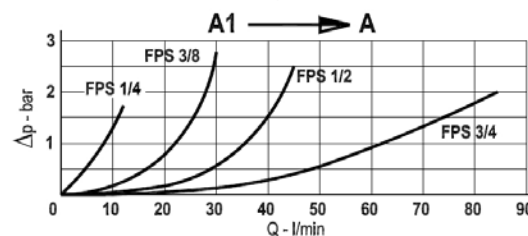
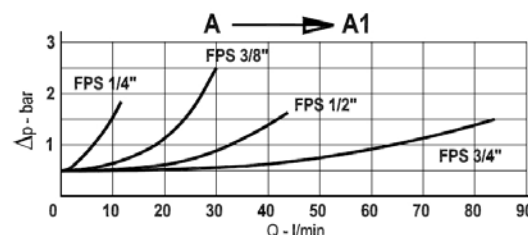
Dimensions

Grafico



Mod.	A	C	D	E max
FPS-14	103	1/4" Gas	36	11
FPS-38	109	3/8" Gas	40	11.5
FPS-12	120	1/2" Gas	42	11
FPS-34	131	3/4" Gas	55	14

Oil viscosity 24 mm²/sec. temp. 50° C



Installation rules

- The valves type FPS can be mounted in any position
- Fluid to be used: hydraulic oil in compliance with DIN 51524 rules, viscosity between 30 and 100 mm²/s (cSt) at 40°C
- Recommended filtration: 25μ
- Hydraulic fluid temperature: from -20° to +75°C

Ordering code

FPS - **

14=1/4" BSP 38=3/8" BSP 12=1/2" BSP 34=3/4" BSP
In-line mounted pilot-operated check valve