

SUBLATE-MOUNTED CHECK VALVE



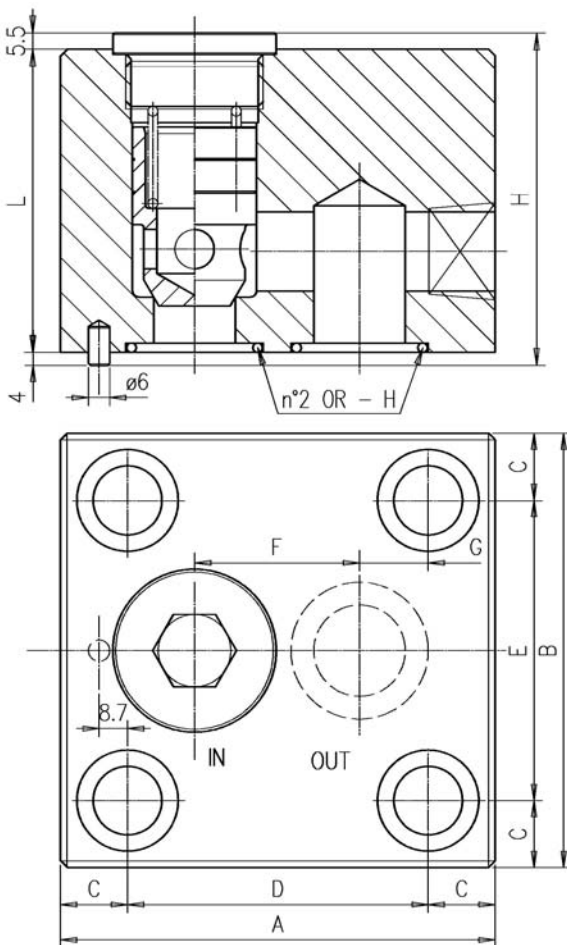
Characteristics

| TYPE | MAX FLOW | MAX PRESSURE | FIXING SYSTEM |
|-----------|------------|--------------|-------------------------|
| IRP-100/* | 120 l/min. | 250 bar | N°4 screws TCEI M16x90 |
| IRP-114/* | 300 l/min. | 250 bar | N°4 screws TCEI M20x110 |

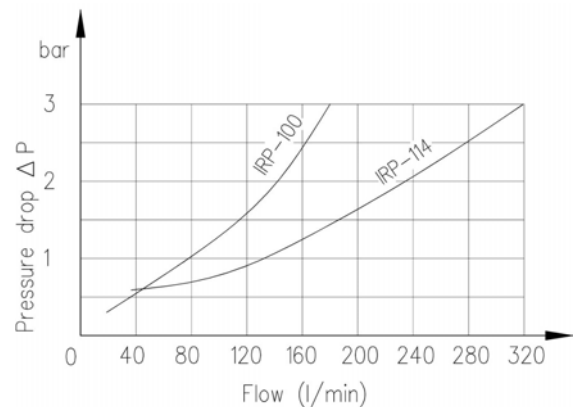
Description

Check valve. They allow the free flow in one direction and block it in the opposite one. They are designed for sub-plate mounting with connection surface in compliance with standard rules. They can be supplied with adjusted springs to obtain different opening pressures.

Dimensions



Diagram



Symbol



Opening pressure

| | |
|----------|---------|
| IRP- * | 0.5 bar |
| IRP- */2 | 2 bar |
| IRP- */4 | 4 bar |
| IRP- */8 | 8 bar |

| TYPE | A | B | C | D | E | F | G | H | I | L |
|-----------|-----|-----|------|----|----|------|------|------|-------|----|
| IRP-100/* | 116 | 100 | 17.5 | 81 | 65 | 46.1 | 12.7 | 4125 | 89.5 | 80 |
| IRP-114/* | 133 | 133 | 20.5 | 92 | 92 | 50.5 | 21 | 4137 | 102.5 | 93 |

Installation rules

- The valves type IRP can be mounted in any position
- Fluid to be used: hydraulic oil in compliance with DIN 51524 rules, viscosity between 30 and 100 mm²/s (cSt) at 40°C
- Recommended filtration: 25µ
- Hydraulic fluid temperature: from -20° to +75°C

Ordering code

