

# CETOP-03 SIZE HYDRAULICALLY OPERATED DIRECTIONAL CONTROL VALVE



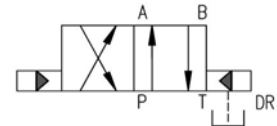
## Characteristics

TYPE	Max pressure on port P - A - B - T	Max pressure on piloting ports	Suggested max flow	Weight
IC-1479	350 bar	250 bar	50 l/min	2.5 Kg.

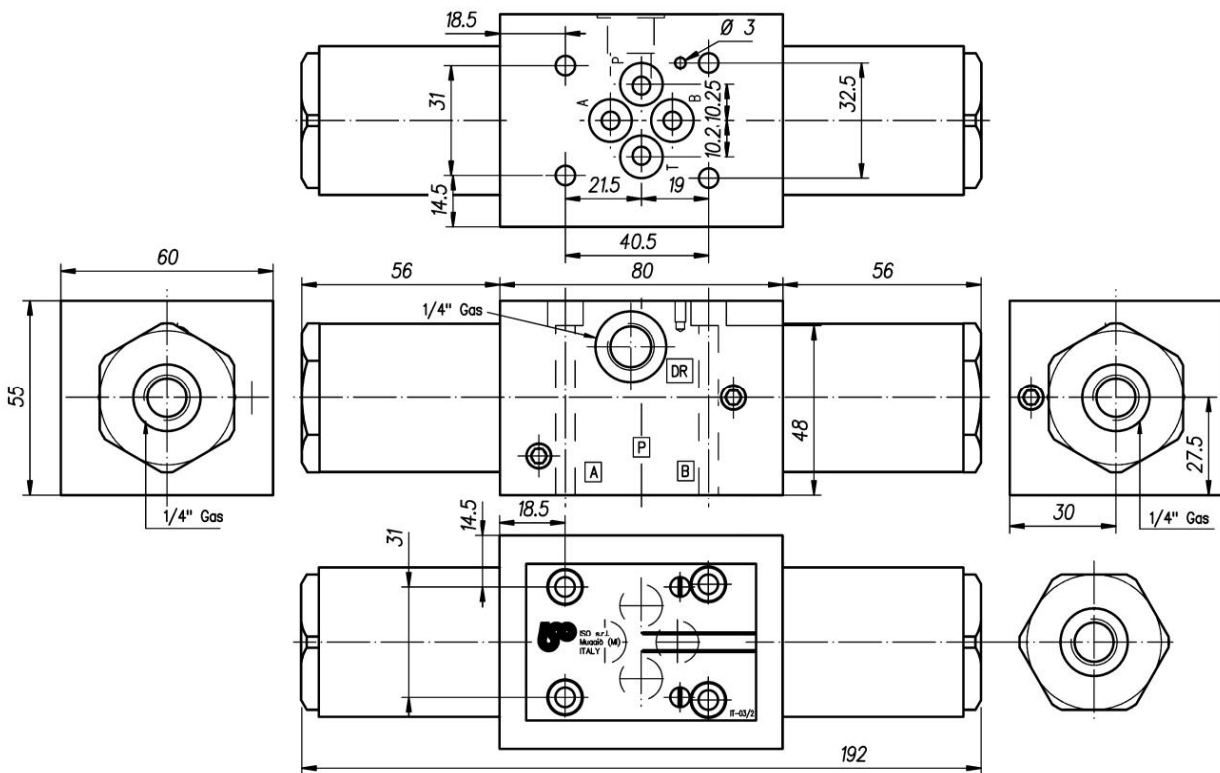
## Description

Hydraulically operated directional control valves.

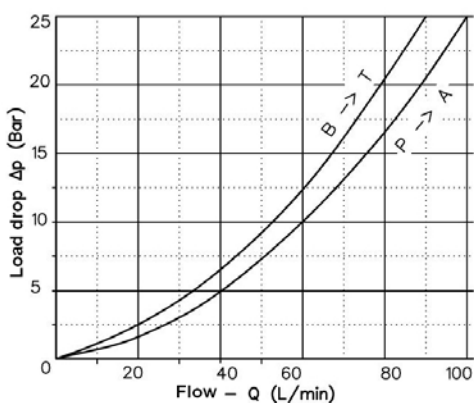
## Symbol



## Dimensions



## Diagram



## Installation rules

- The distributors type IC-1479 can be mounted in any position
- Fluid to be used: hydraulic oil in compliance with DIN 51524 rules, viscosity between 30 and 100 mm<sup>2</sup>/s (cSt) at 40°C
- Recommended filtration: 25μ
- Hydraulic fluid temperature: from -20° to +75°C

## Ordering code

**IC-1479**

Hydraulically operated directional control valves.