

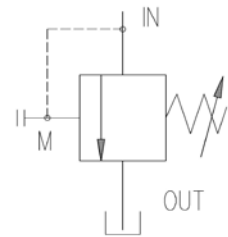
# IN-LINE PRESSURE CONTROL VALVE



## Characteristics

TYPE	MAX. FLOW (l/min.)	PRESSURE (bar)	WEIGHT (Kg)
ICM-12 / 15	50	3 ÷ 15	2
ICM-12 / 75		5 ÷ 75	
ICM-12 / 150		11 ÷ 150	
ICM-12 / 250	20	16 ÷ 250	
ICM-12 / 320		60 ÷ 320	
ICM-12 / 500		150 ÷ 500	

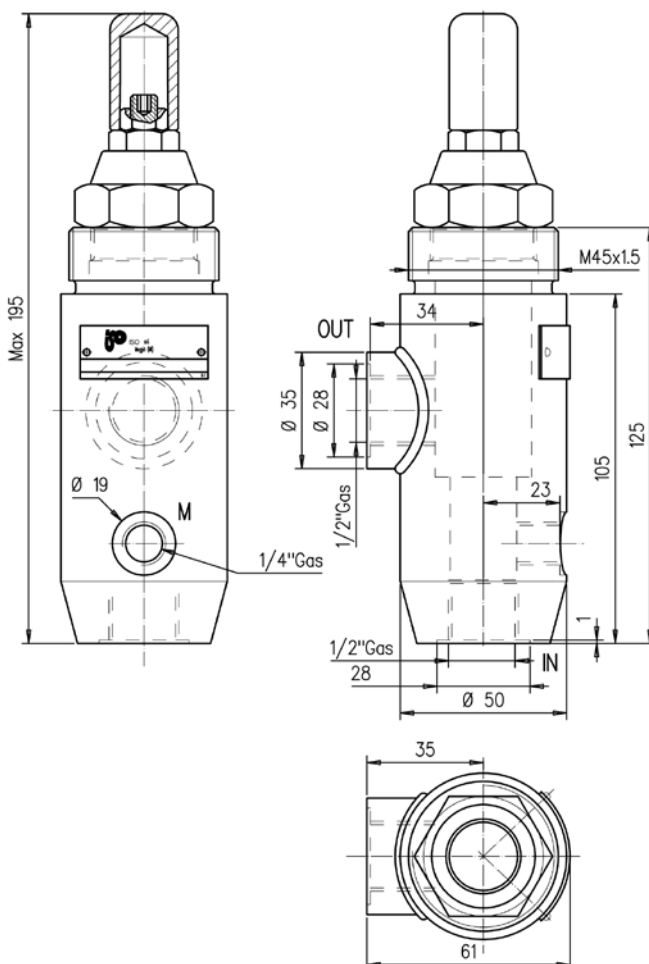
## Symbol



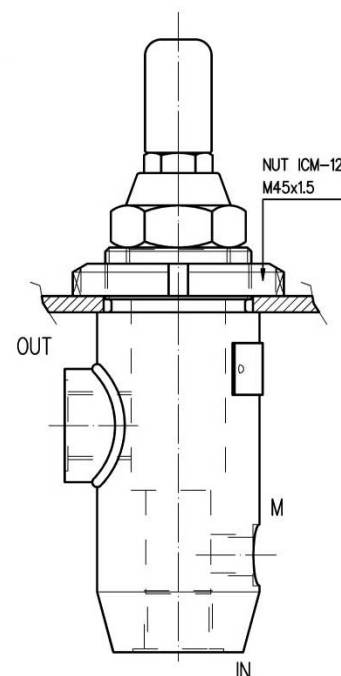
## Description

Direct operated pressure control valves.  
In line mounting.

## Dimensions



## Mounting example



## Installation rules

- The valves type ICM can be mounted in any position
- Fluid to be used: hydraulic oil in compliance with DIN 51524 rules, viscosity between 30 and 100 mm<sup>2</sup>/s (cSt) at 40°C
- Recommended filtration: 25µ
- Hydraulic fluid temperature: from -20° to +75°C

## Ordering code

ICM-12 / \*\*\* \*

V = with handwheel (otherwise omit it)

Setting: 15=3-15 bar 75=5-75 bar 150=11-150 bar

250=16-250 bar 320=600-320 bar 500=150-500 bar

Pressure relief valve