

# IN-LINE SEQUENCE VALVE



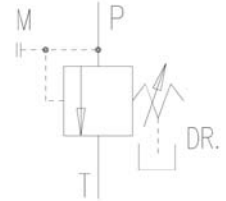
## Characteristics

TYPE	MAX FLOW	MAX PRESSURE	WEIGHT
VMSL-34	120 l/min.	350 bar	Kg. 4.5
VMSL-114	300 l/min.	350 bar	Kg. 6.5

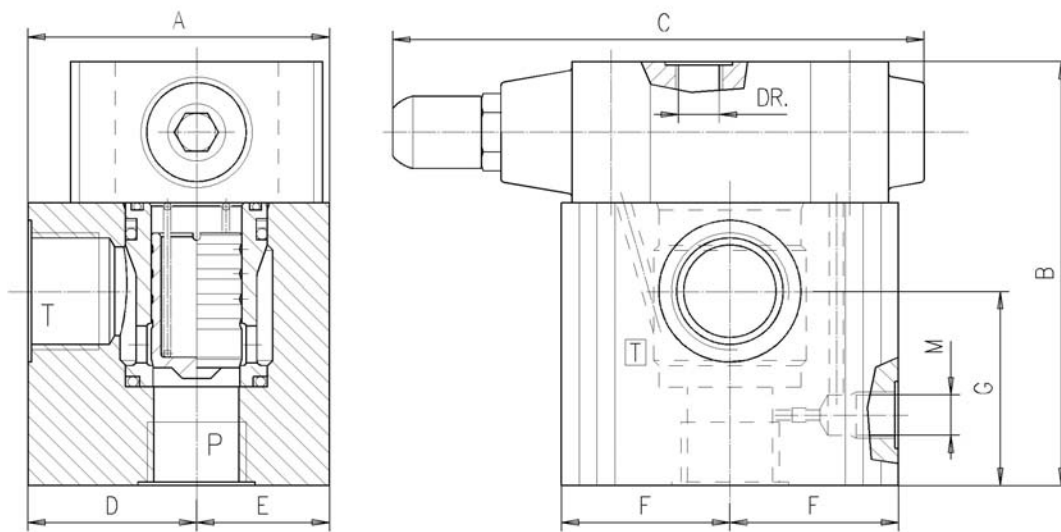
## Description

Cartridge, manually adjustable, two stage sequence valves. The pressure setting is achieved by loosening the fastening bolt and rotating the grub screw clockwise to increase the pressure or counter clockwise to decrease it.

## Symbol



## Dimensions



TYPE	A	B	C	D	E	F	G	M	P	T	DR
VMSL-34	85	120	143	47.5	37.5	47.5	55	1/4" Bsp	3/4" Bsp	1" Bsp	1/4" Bsp
VMSL-114	102	133	143	65	37	47.5	58	1/4" Bsp	1" 1/4 Bsp	1" 1/2 Bsp	1/4" Bsp

## Installation rules

- The valves type VMSL can be mounted in any position.
- Fluid to be used: hydraulic oil in compliance with DIN 51524 rules, viscosity between 30 and 100 mm<sup>2</sup>/s (cSt) at 40°C
- Recommended filtration: 25µ
- Hydraulic fluid temperature: from -20° to +75°C

## Ordering code

