

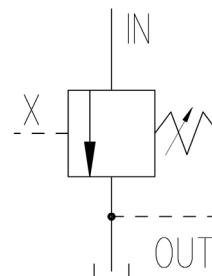
CETOP-10R SIZE CUT-OFF VALVE



Characteristics

TYPE	MAX FLOW	MAX PRESSURE	WEIGHT
VME-10R	400 l/min.	350 bar	Kg. 6.5

Symbol



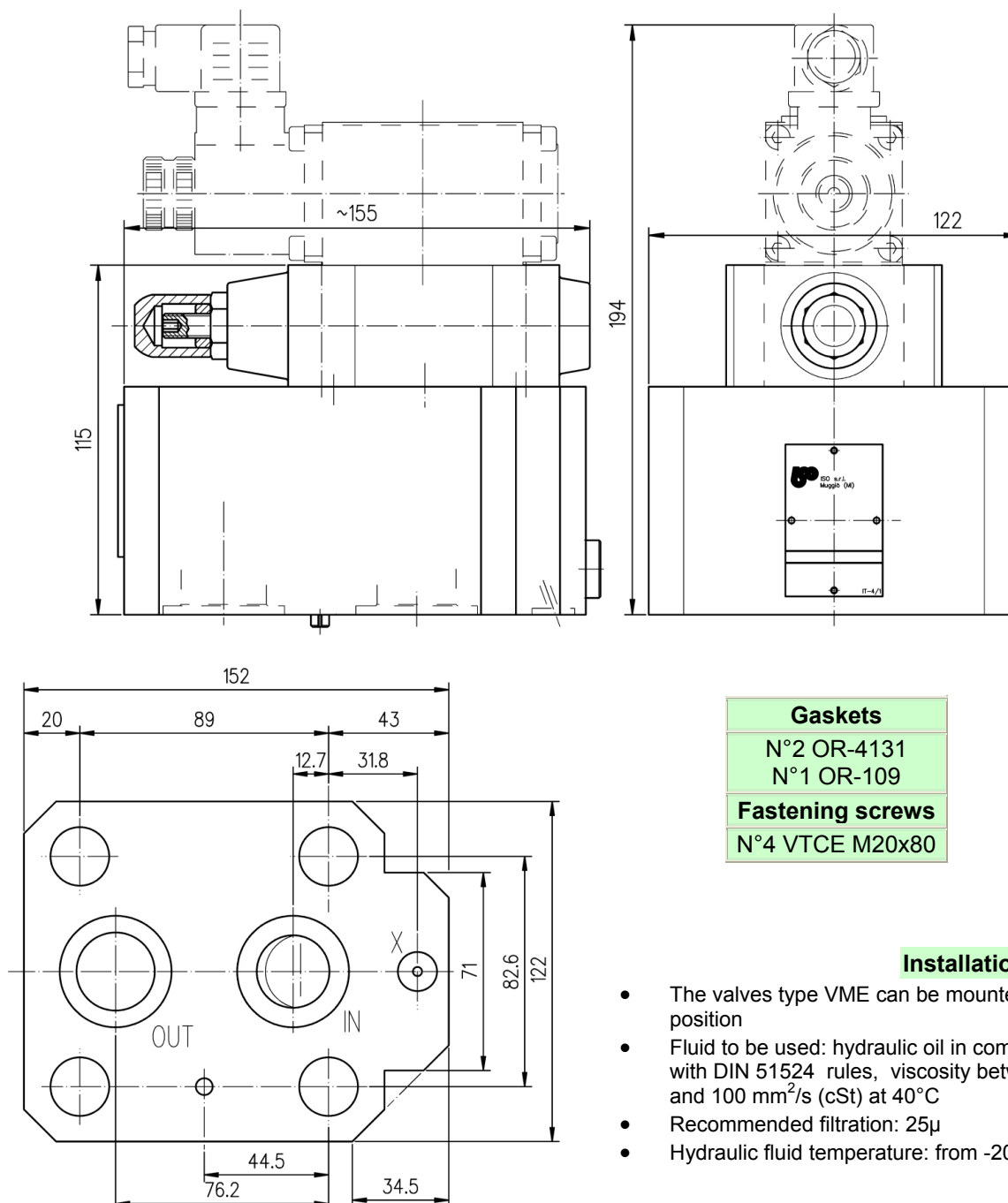
Description

Two-stage cut-off valve equipped with balanced poppet, designed to operate in hydraulic systems.

The piloting pressure of the poppet, placed in the upper stage, is adjusted by a screw (clockwise the pressure increases).

It can be supplied with a venting solenoid valve which allows the pump starting up without pressure.

Dimensions



Gaskets

N°2 OR-4131

N°1 OR-109

Fastening screws

N°4 VTCE M20x80

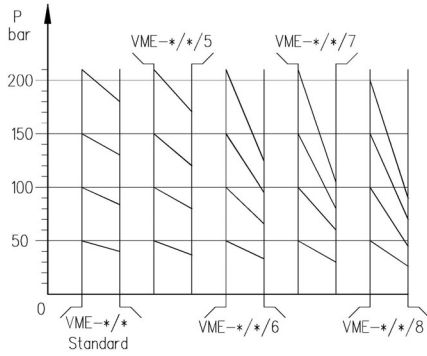
Installation rules

- The valves type VME can be mounted in any position
- Fluid to be used: hydraulic oil in compliance with DIN 51524 rules, viscosity between 30 and 100 mm²/s (cSt) at 40°C
- Recommended filtration: 25μ
- Hydraulic fluid temperature: from -20° to +75°C

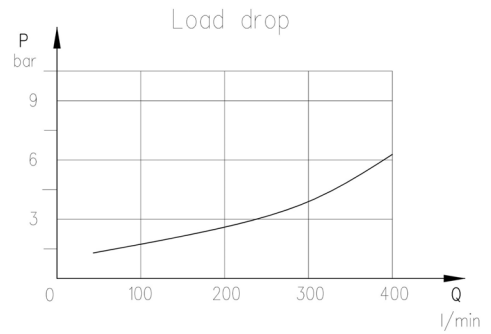
CETOP-10R SIZE CUT-OFF VALVE



Diagram



Opening-closing
versus differential
piston Ø diagram



Ordering code

VME-10R	/	***	/	***	/	*	/	*	/	**	/	*
<p>V = with handwheel Synthetic fluids : WG = water-glycol PE = phosphate ester D = external drain 1/4" BSP Differential pressure : 5 / 6 / 7 / 8 (see diagram) Pressure range diagram: 100=06-100 bar 210=50-210 bar 350=100-350 bar</p>												
<p>10 = with normally-opened pilot (otherwise omit it)</p>												
<p>11 = with normally-closed pilot (otherwise omit it)</p>												
<p>P = pre-arrangement for pilot (otherwise omit it)</p>												
<p>CETOP-10R size cut-off valve</p>												

