

# CETOP-08R SIZE CUT-OFF VALVE



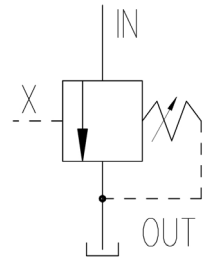
## Characteristics

TYPE	MAX FLOW	MAX PRESSURE	WEIGHT
VME-08R	200 l/min.	350 bar	Kg. 6.5

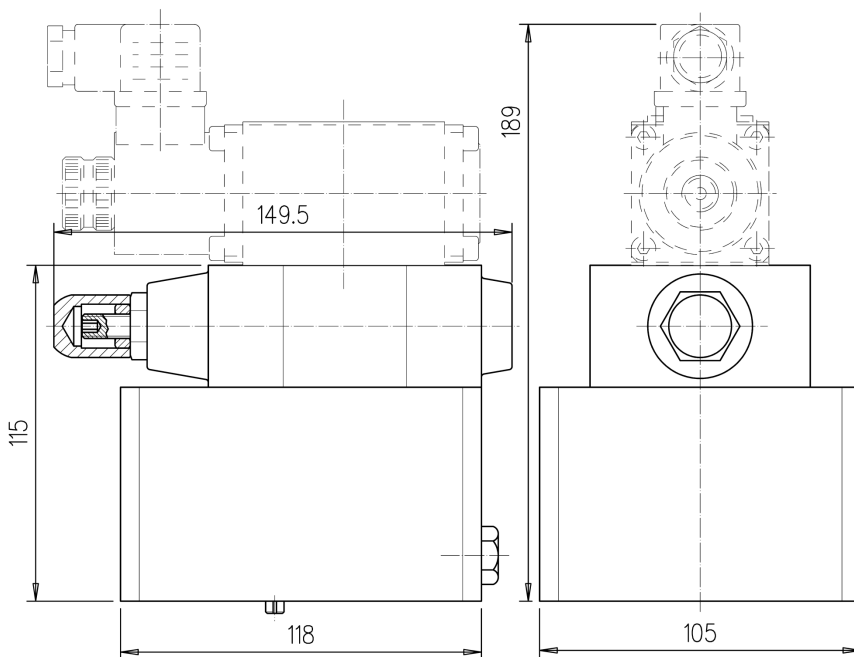
## Description

Two-stage cut-off valve equipped with balanced poppet, designed to operate in hydraulic systems. The piloting pressure of the poppet, placed in the upper stage, is adjusted by a screw (clockwise the pressure increases). It can be supplied with a venting solenoid valve which allows the pump starting up without pressure.

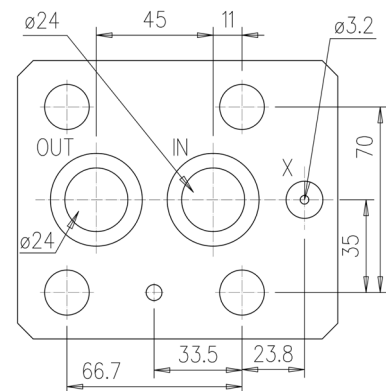
## Symbol



## Dimensions



<b>Gaskets</b>
N°2 OR-4112
N°1 OR-109
<b>Fastening screws</b>
N°4 VTCE M16x70



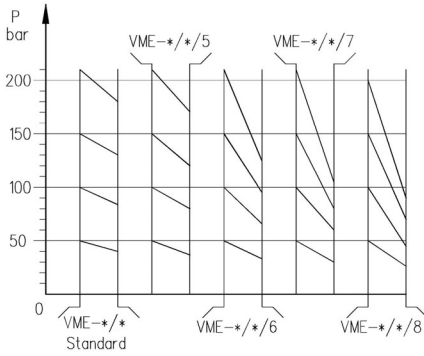
## Installation rules

- The valves type VME can be mounted in any position.
- Fluid to be used: hydraulic oil in compliance with DIN 51524 rules, viscosity between 30 and 100 mm<sup>2</sup>/s (cSt) at 40°C
- Recommended filtration: 25μ
- Hydraulic fluid temperature: from -20° to +75°C

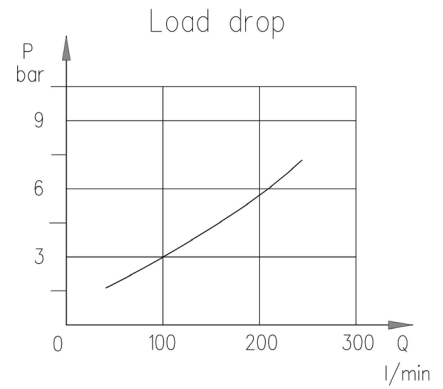
# CETOP-08R SIZE CUT-OFF VALVE



## Diagram



Opening-closing  
versus differential  
piston Ø diagram



## Ordering code

VME-08R / \*\*\* / \*\*\* / \* / \* / \*\* / \*

- V = with handwheel
- Synthetic fluids : **WG** = water-glycol **PE** = phosphate ester
- D = external drain 1/4" BSP
- Differential pressure : 5 / 6 / 7 / 8 (see diagram)
- Pressure range diagram: 100=06-100 bar 210=50-210 bar 350=100-350 bar
- 10 = with normally-opened pilot (otherwise omit it)
- 11 = with normally-closed pilot (otherwise omit it)
- P = pre-arrangement for pilot (otherwise omit it)

CETOP-08R size cut-off valve

