

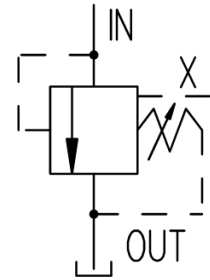
CETOP-10R PRESSURE RELIEF VALVE



Characteristics

TYPE	MAX FLOW	MAX PRESSURE	WEIGHT
VM-10R	400 l/min.	350 bar	Kg. 6.5

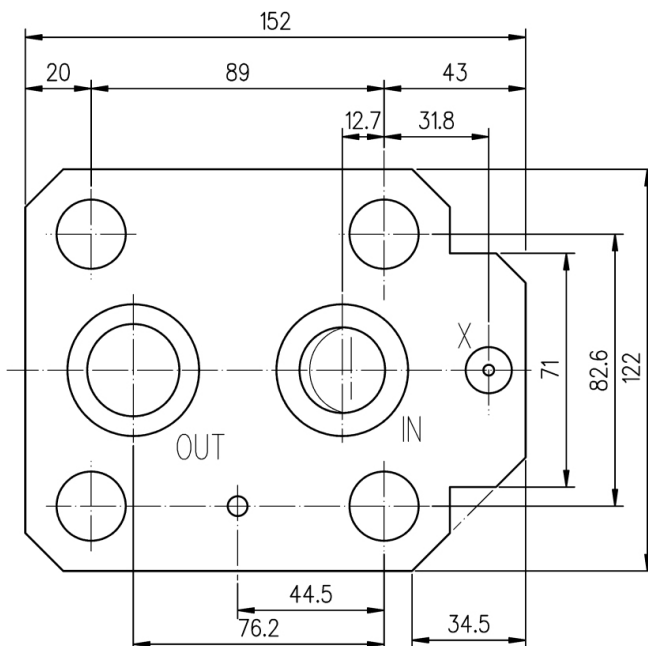
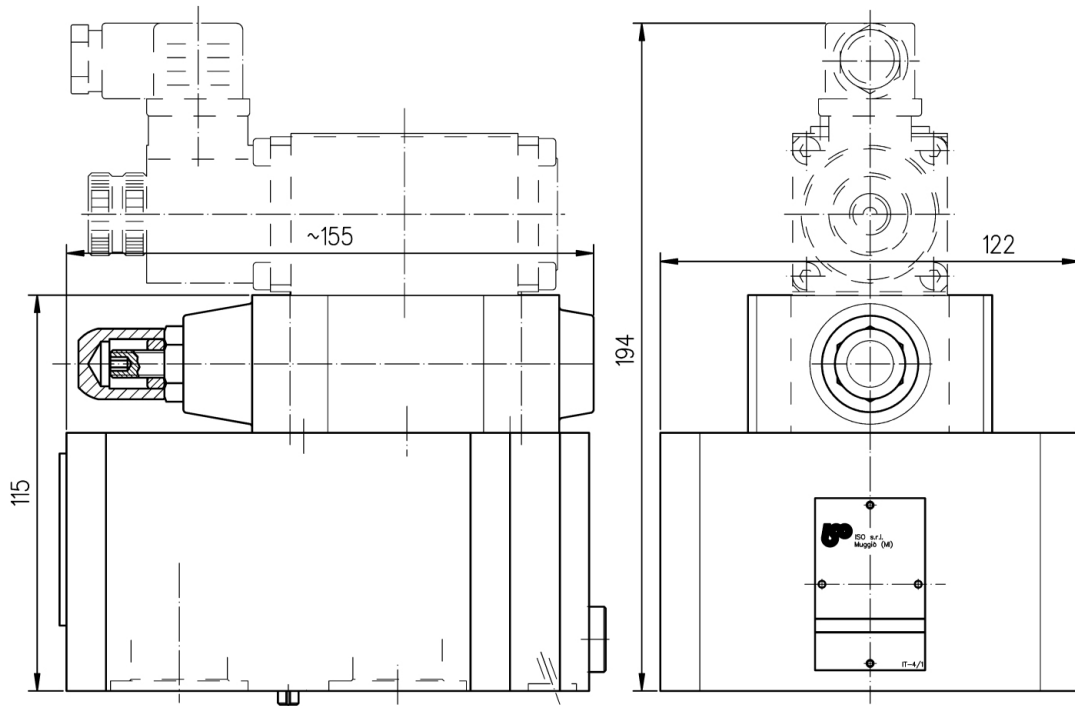
Symbol



Description

Two-stage pressure relief valve equipped with balanced poppet, designed to operate in hydraulic systems. The piloting pressure of the poppet, placed in the upper stage, is adjusted by a screw (clockwise the pressure increases). It can be supplied with venting solenoid valve.

Dimensions



Gaskets

N°2 OR-4131

N°1 OR-109

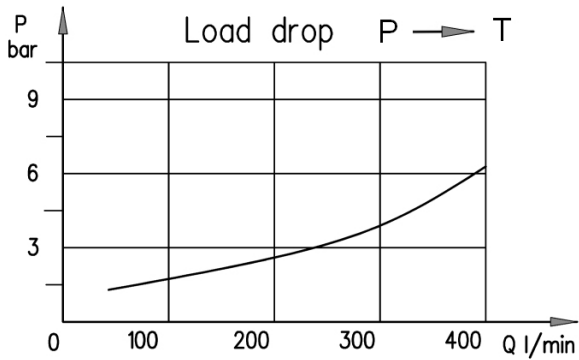
Fastening screws

N°4 VTCE M20x80

CETOP-10R PRESSURE RELIEF VALVE



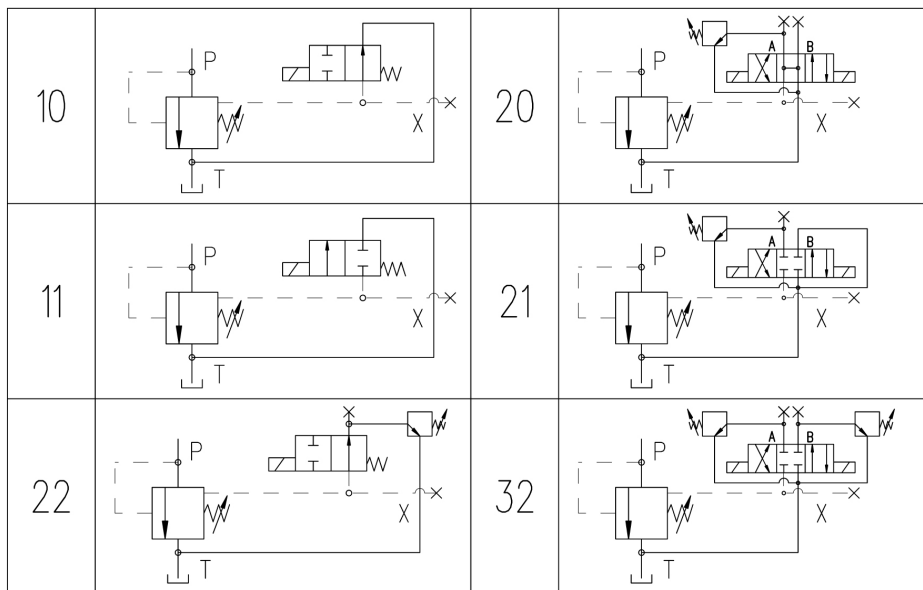
Diagrams



Installation rules

- The valves type VM can be mounted in any position.
- Fluid to be used: hydraulic oil in compliance with DIN 51524 rules, viscosity between 30 e 100 mm²/s (cSt) at 40°C
- Recommended filtration: 25µ
- Hydraulic fluid temperature: from -20° to +75°C

Pilots table



Ordering code

VM-10R / * / *** / * / * / ***** / ** / *

V = with handwheel
 Synthetic fluids: **WG** = water-glycol **PE** = phosphate ester

Supply voltage :	Direct current	Alternate current
X = without connector	12DC	110/50/60
N = with DIN-43650 IP-65 connector	24DC	230/50/60
Q = connector with built-in rectifier bridge	28DC	48/50
	110 RC	(other voltages on request)

D = external drain 1/4" BSP

Pressure range diagram : **100**=06-100 bar **210**=07-210 bar **350**=08-350 bar

Type of pilot (see pilots table)

P = pre-arrangement for pilot
10 = one setting ; venting with de-energized solenoid
11 = one setting ; venting with energized solenoid
22 = two settings ; without venting
20 = two settings ; venting with de-energized solenoid
21 = two settings ; venting with energized solenoid
32 = three settings ; without venting

CETOP-10R pressure relief valve