

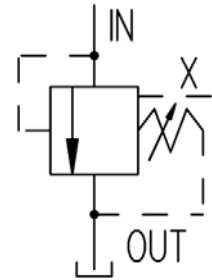
# CETOP-06R PRESSURE RELIEF VALVE



## Characteristics

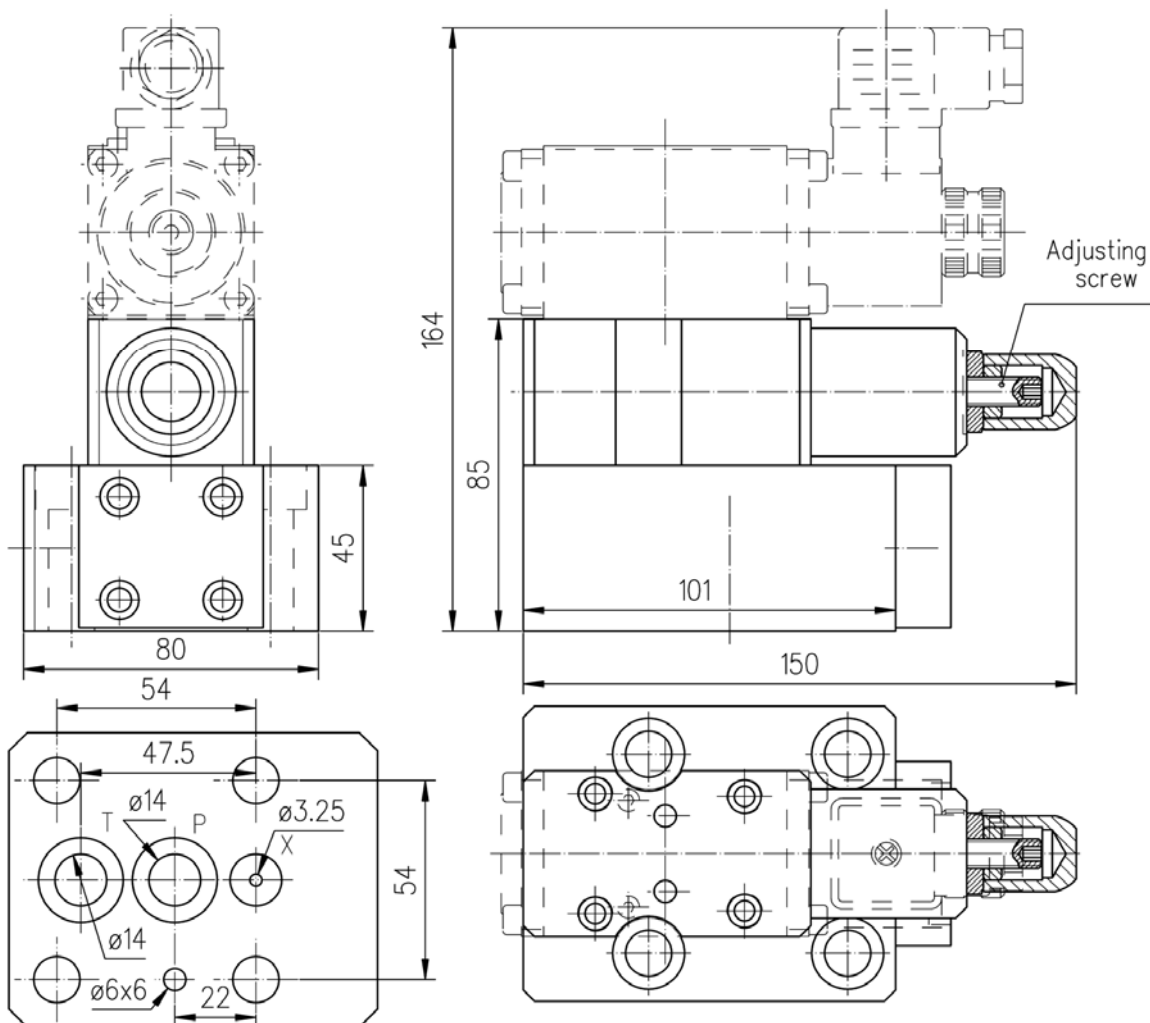
TYPE	MAX FLOW	MAX PRESSURE	WEIGHT
VM-06R	80 l/min.	350 bar	Kg. 1.8

## Symbol



**Description** Two-stage pressure relief valve equipped with balanced poppet, designed to operate in hydraulic systems. The piloting pressure of the poppet, placed in the upper stage, is adjusted by a screw (clockwise the pressure increases). It can be supplied with venting solenoid valve.

## Dimensions



## Installation rules

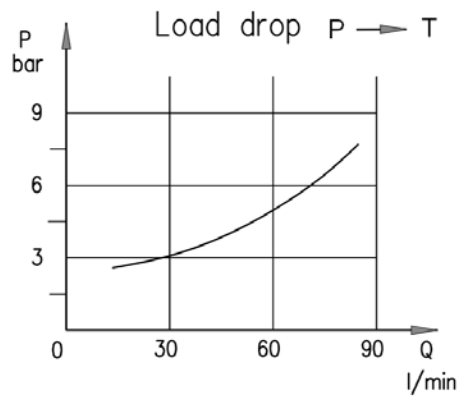
- The valves type VM can be mounted in any position.
- Fluid to be used: hydraulic oil in compliance with DIN 51524 rules, viscosity between 30 e 100 mm<sup>2</sup>/s (cSt) at 40°C
- Recommended filtration: 25µ
- Hydraulic fluid temperature: from -20° to +75°C

<b>Gaskets</b>
N°2 OR-123
N°1 OR-109
<b>Fastening screws</b>
N°4 VTCEI M12x60

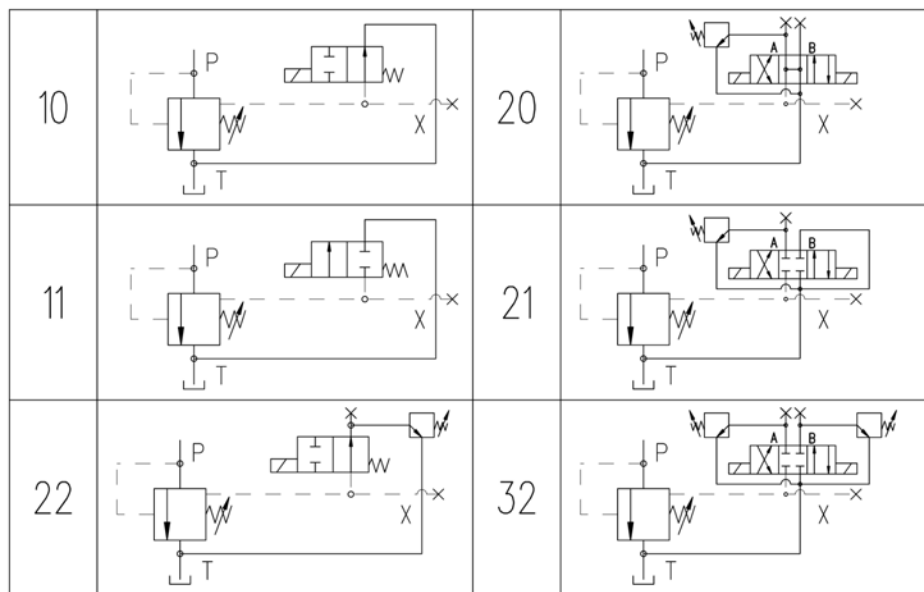
# CETOP-06R PRESSURE RELIEF VALVE



## Diagrams



## Pilots table



## Ordering code

VM-06R	/	*	/	***	/	*	/	*	/	*****	/	**	/	*														
<p><b>V</b> = with handwheel</p> <p>Synthetic fluids: <b>WG</b> = water-glycol <b>PE</b> = phosphate ester</p> <table border="1"> <thead> <tr> <th>Supply voltage :</th> <th>Direct current</th> <th>Alternate current</th> </tr> </thead> <tbody> <tr> <td></td> <td><b>12DC</b></td> <td><b>110/50/60</b></td> </tr> <tr> <td></td> <td><b>24DC</b></td> <td><b>230/50/60</b></td> </tr> <tr> <td></td> <td><b>28DC</b></td> <td><b>48/50</b></td> </tr> <tr> <td></td> <td><b>110 RC</b></td> <td>(other voltages on request)</td> </tr> </tbody> </table> <p><b>X</b> = without connector  <b>N</b> = with DIN-43650 IP-65 connector  <b>Q</b> = connector with built-in rectifier bridge</p> <p><b>D</b> = external drain 1/4" BSP</p> <p>Pressure range diagram : <b>100</b>=06-100 bar <b>210</b>=07-210 bar <b>350</b>=08-350 bar</p> <p><b>P</b> = pre-arrangement for pilot</p> <p><b>10</b> = one setting ; venting with de-energized solenoid  <b>11</b> = one setting ; venting with energized solenoid  <b>22</b> = two settings ; without venting  <b>20</b> = two settings ; venting with de-energized solenoid  <b>21</b> = two settings ; venting with energized solenoid  <b>32</b> = three settings ; without venting</p>														Supply voltage :	Direct current	Alternate current		<b>12DC</b>	<b>110/50/60</b>		<b>24DC</b>	<b>230/50/60</b>		<b>28DC</b>	<b>48/50</b>		<b>110 RC</b>	(other voltages on request)
Supply voltage :	Direct current	Alternate current																										
	<b>12DC</b>	<b>110/50/60</b>																										
	<b>24DC</b>	<b>230/50/60</b>																										
	<b>28DC</b>	<b>48/50</b>																										
	<b>110 RC</b>	(other voltages on request)																										
<p>Type of pilot (see pilots table)</p>																												
<p>CETOP-06R pressure relief valve</p>																												