

DOUBLE PUMPS - RADIAL PISTON PUMPS + GEAR PUMPS

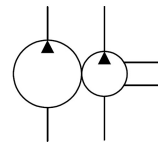


Caracteristics

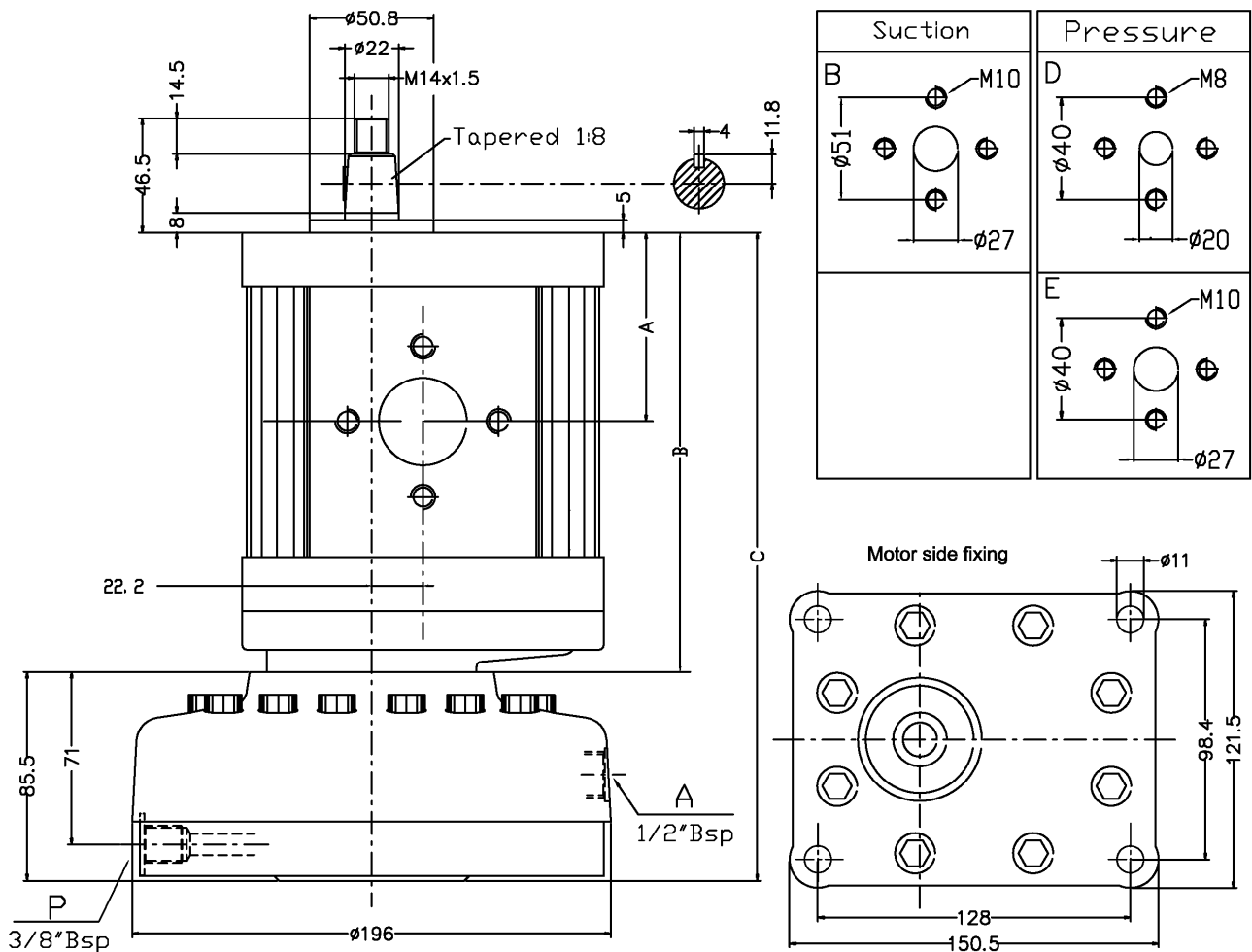
TYPE	cm ³ /rev	L/m BP 1450 rev/m	Pmax BP	cm ³ /rev AP	L/m AP 1450 rev/m	Pmax AP	A	B	C	Suction	Pressure	Weight Kg
IPFRG3-33/R7-44	33.10	48	250	4,4	6,2	500	67	159	244.5	Tipo B	Tipo D	10
IPFRG3-33/R7-64				6,4	9	350						
IPFRG3-33/R7-74				7,4	10,5	300						
IPFRG3-44/R7-44	44.10	63.9	250	4,4	6,2	500	71	167	252.5	Tipo B	Tipo E	11
IPFRG3-44/R7-64				6,4	9	350						
IPFRG3-44/R7-74				7,4	10,5	300						
IPFRG3-55/R7-44	55.10	80	230	4,4	6,2	500	75	175	260.5	Tipo B	Tipo E	12
IPFRG3-55/R7-64				6,4	9	350						
IPFRG3-55/R7-74				7,4	10,5	300						

Descriptions Two-stage pump with fixed displacement IPFRG3-../R7.

Symbol



Dimensions



DOUBLE PUMPS - RADIAL PISTON PUMPS + GEAR PUMPS



Installation rules

- Two-stage pump with fixed displacement
- BP gear pump flanged in axis with AP radial piston pump
- Fixing : flange type on shaft side
- Direction of rotation : Standard clockwise
- Rotation speed : 900-1800 g/m Installation : external or submersed to be specified
- Ambient temperature range : -20°C to +80°C
- Recommended filtration : mineral oil according to DIN 51524-51525
- Fluid viscosity range : 16-300cSt (2,4-40°E), (recommended 16-35 cSt)
- Oil contamination level: ISO 16/13 – Recommended filters 25 : 60 μ (either feed or return filter)

Ordering code

