

# DOUBLE PUMPS - RADIAL PISTON PUMPS + GEAR PUMPS

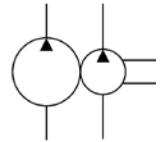


## Characteristics

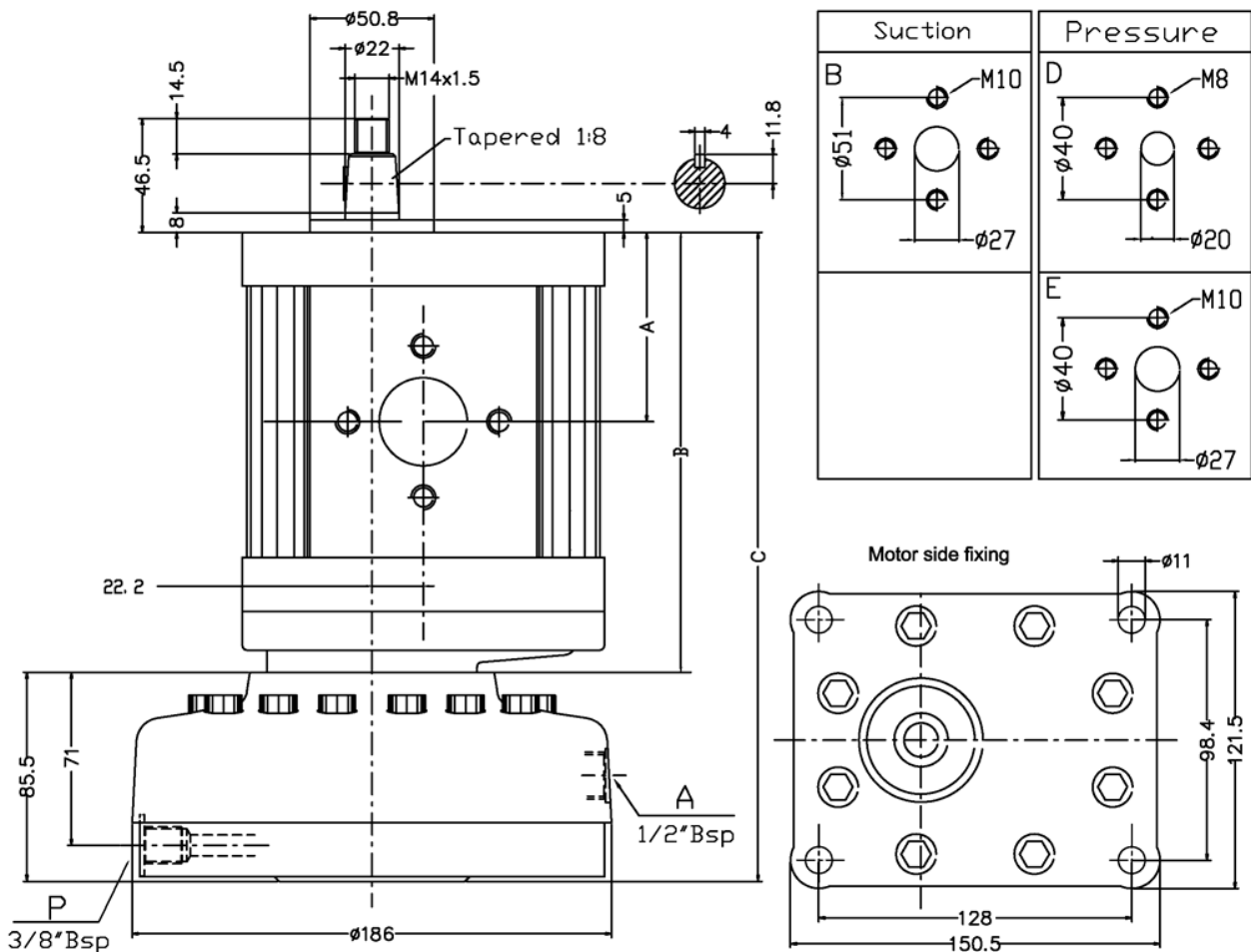
TYPE	cm <sup>3</sup> /rev	L/m BP 1450 rev/m	Pmax BP	cm <sup>3</sup> /rev AP	L/m AP 1450 rev/m	Pmax AP	A	B	C	Suction	Pressure	Weight Kg
IPFRG3-33/R5-32	33.10	48	250	3.2	4.5	500	67	159	244.5	Tipo B	Tipo D	8
IPFRG3-33/R5-45				4.5	6.4	350						
IPFRG3-33/R5-53				5.3	7.5	300						
IPFRG3-44/R5-32	44.10	63.9	250	3.2	4.5	500	71	167	252.5	Tipo B	Tipo E	9
IPFRG3-44/R5-45				4.5	6.4	350						
IPFRG3-44/R5-53				5.3	7.5	300						
IPFRG3-55/R5-32	55.10	80	230	3.2	4.5	500	75	175	260.5	Tipo B	Tipo E	10
IPFRG3-55/R5-45				4.5	6.4	350						
IPFRG3-55/R5-53				5.3	7.5	300						

**Descriptions** Two-stage pump with fixed displacement IPFRG3-../R5.

## Symbol



## Dimensions



# DOUBLE PUMPS - RADIAL PISTON PUMPS + GEAR PUMPS



## Installation rules

- Two-stage pump with fixed displacement
- BP gear pump flanged in axis with AP radial piston pump
- Fixing : flange type on shaft side
- Direction of rotation : Standard clockwise
- Rotation speed : 900-1800 g/m Installation : external or submersed to be specified
- Ambient temperature range : -20°C to +80°C
- Recommended filtration : mineral oil according to DIN 51524-51525
- Fluid viscosity range : 16-300cSt (2,4-40°E), (recommended 16-35 cSt )
- Oil contamination level: ISO 16/13 – Recommended filters 25 : 60  $\mu$  (either feed or return filter)

## Ordering code

<b>IPFRG3</b>	-	<b>**</b>	-	<b>/ R5</b>	-	<b>**</b>
						<b>32 = 3,2 cm<sup>3</sup>/rev   45 = 4,5 cm<sup>3</sup>/rev   53 = 5,3 cm<sup>3</sup>/rev</b>
						<b>33 = 33,1 cm<sup>3</sup>/rev   44 = 44,1 cm<sup>3</sup>/rev   55 = 55,1 cm<sup>3</sup>/rev</b>
						Two-stage pump with fixed displacement