

DOUBLE PUMPS - RADIAL PISTON PUMPS + GEAR PUMPS

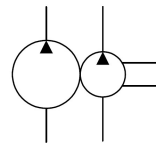


Characteristics

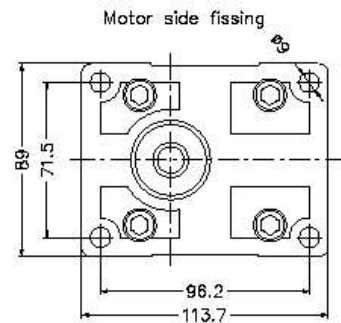
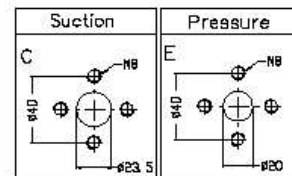
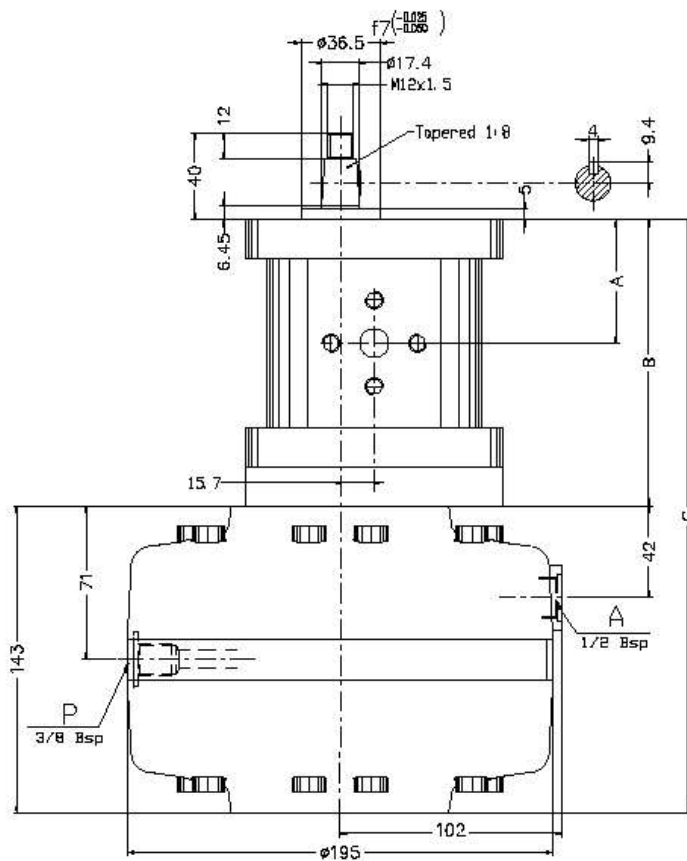
TYPE	cm ³ /rev	L/m BP 1450 rev/m	Pmax BP	cm ³ /rev AP	L/m AP 1450 rev/m	Pmax AP	A	B	C	Suction	Pressure
IPFRG2-40/R10-63	39.6	57.4	140	6.3	8.9	500	71.2	160.4	303.4	Tipo C	Tipo E
IPFRG2-40/R10-89				8.9	12.8	350					
IPFRG2-40/R10-106				10.6	15	300					

Descriptions Two-stage pump with fixed displacement IPFRG2-../R10.

Symbol



Dimensions



DOUBLE PUMPS - RADIAL PISTON PUMPS + GEAR PUMPS



Installation rules

- Two-stage pump with fixed displacement
- BP gear pump flanged in axis with AP radial piston pump
- Fixing : flange type on shaft side
- Direction of rotation : Standard clockwise
- Rotation speed : 900-1800 g/m Installation : external or submersed to be specified
- Ambient temperature range : -20°C to +80°C
- Recommended filtration : mineral oil according to DIN 51524-51525
- Fluid viscosity range : 16-300cSt (2,4-40°E), (recommended 16-35 cSt)
- Oil contamination level: ISO 16/13 – Recommended filters 25 : 60 μ (either feed or return filter)

Ordering code

IPFRG2	-	**	-	/R10	-	**
						63 = 6,3 cm ³ /rev 89 = 8,9 cm ³ /rev 106 = 10,6 cm ³ /rev
						19 = 19,2 cm ³ /rev 22 = 22,8 cm ³ /rev 26 = 26,2 cm ³ /rev
						30 = 30 cm ³ /rev 34 = 34,2 cm ³ /rev 40 = 39,6 cm ³ /rev
						Two-stage pump with fixed displacement