

# DOUBLE PUMPS - RADIAL PISTON PUMPS + GEAR PUMPS



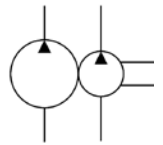
## Caracteristics

TYPE	cm <sup>3</sup> /rev	L/m BP 1450 rev/m	Pmax BP	cm <sup>3</sup> /rev AP	L/m AP 1450 rev/m	Pmax AP	A	B	C	Suction	Pressure	Weight Kg
IPFRG2-19/R5-32	19.2	27.8	210	3.2	4.5	500	54.2	126.4	211.9	Tipo B	Tipo D	7
IPFRG2-19/R5-45				4.5	6.4	350						
IPFRG2-19/R5-53				5.3	7.5	300						
IPFRG2-22/R5-32	22.8	33	200	3.2	4.5	500	57.2	132.4	217.9	Tipo B	Tipo D	7.2
IPFRG2-22/R5-45				4.5	6.4	350						
IPFRG2-22/R5-53				5.3	7.5	300						
IPFRG2-26/R5-32	26.2	37.9	170	3.2	4.5	500	59.2	136.4	221.9	Tipo C	Tipo E	7.4
IPFRG2-26/R5-45				4.5	6.4	350						
IPFRG2-26/R5-53				5.3	7.5	300						
IPFRG2-30/R5-32	30	43.5	160	3.2	4.5	500	63.2	144.4	229.9	Tipo C	Tipo E	7.5
IPFRG2-30/R5-45				4.5	6.4	350						
IPFRG2-30/R5-53				5.3	7.5	300						
IPFRG2-34/R5-32	34.2	49.5	150	3.2	4.5	500	66.7	151.4	236.9	Tipo C	Tipo E	7.7
IPFRG2-34/R5-45				4.5	6.4	350						
IPFRG2-34/R5-53				5.3	7.5	300						
IPFRG2-40/R5-32	39.6	57.4	140	3.2	4.5	500	71.2	160.4	245.9	Tipo C	Tipo E	8
IPFRG2-40/R5-45				4.5	6.4	350						
IPFRG2-40/R5-53				5.3	7.5	300						

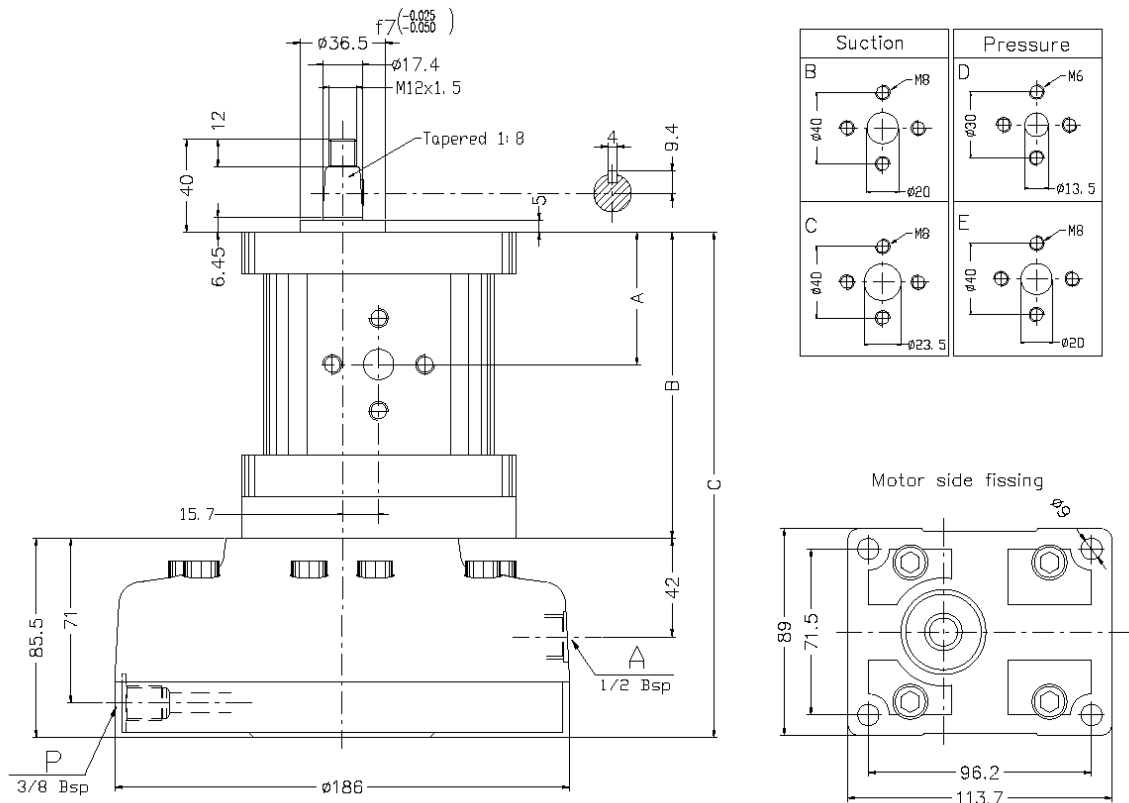
## Descriptions

Two-stage pump with fixed displacement IPFRG2-../R5.

## Symbol



## Dimensions





## Installation rules

- Two-stage pump with fixed displacement
- BP gear pump flanged in axis with AP radial piston pump
- Fixing : flange type on shaft side
- Direction of rotation : Standard clockwise
- Rotation speed : 900-1800 g/m Installation : external or submersed to be specified
- Ambient temperature range : -20°C to +80°C
- Recommended filtration : mineral oil according to DIN 51524-51525
- Fluid viscosity range : 16-300cSt (2,4-40°E), (recommended 16-35 cSt )
- Oil contamination level: ISO 16/13 – Recommended filters 25 : 60  $\mu$  (either feed or return filter)

## Ordering code

<b>IPFRG2</b>	-	<b>**</b>	-	<b>/ R5</b>	-	<b>**</b>
						<b>32 = 3,2 cm<sup>3</sup>/rev   45 = 4,5 cm<sup>3</sup>/rev   53 = 5,3 cm<sup>3</sup>/rev</b>
						<b>19 = 19,2 c3/rev   22 = 22,8 c3/rev   26 = 26,2 c3/rev</b>
						<b>30 = 30 c3/g   34 = 34,2 c3/g   40 = 39,6 c3/g</b>
<b>Two-stage pump with fixed displacement</b>						