

DOUBLE PUMPS - RADIAL PISTON PUMPS + GEAR PUMPS

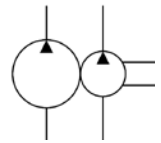


Caracteristics

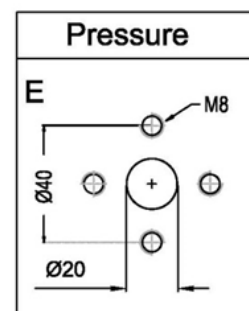
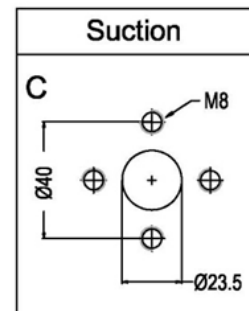
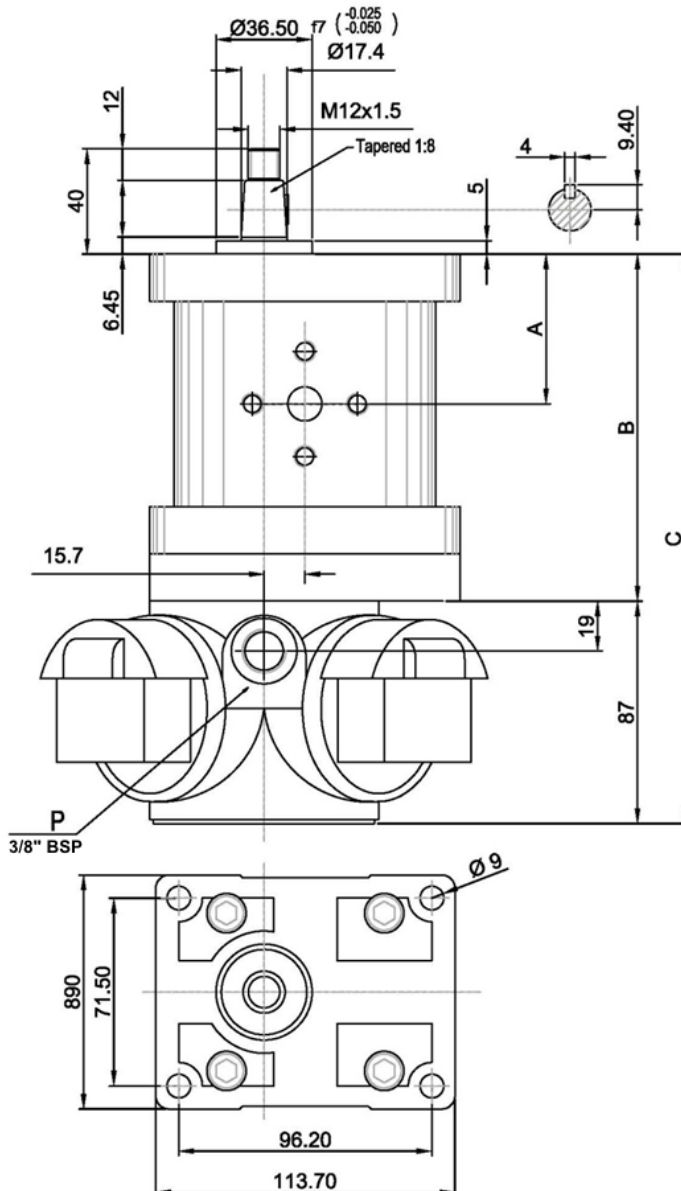
TYPE	cm ³ /rev	L/m BP 1450 rev/m	Pmax BP	cm ³ /rev AP	L/m AP 1450 rev/m	Pmax AP	A	B	C	Suction	Pressure	Weight Kg
IPFRG2-30/R3-09	30,00	43,50	160	0.90	1.38	800	63,2	144,4	231.4	Tipo C	Tipo E	6
IPFRG2-30/R3-12				1.2	1.71	600						
IPFRG2-30/R3-19				1.89	2.67	500						
IPFRG2-30/R3-27				2.72	3.85	350						

Descriptions Two-stage pump with fixed displacement IPFRG2.

Symbol



Dimensions



DOUBLE PUMPS - RADIAL PISTON PUMPS + GEAR PUMPS



Installation rules

- Two-stage pump with fixed displacement
- BP gear pump flanged in axis with AP radial piston pump
- Fixing : flange type on shaft side
- Direction of rotation : Standard clockwise
- Rotation speed : 900-1800 g/m Installation : external or submersed to be specified
- Ambient temperature range : -20°C to +80°C
- Recommended filtration : mineral oil according to DIN 51524-51525
- Fluid viscosity range : 16-300cSt (2,4-40°E), (recommended 16-35 cSt)
- Oil contamination level: ISO 16/13 – Recommended filters 25 : 60 μ (either feed or return filter)

Ordering code

IPFRG2-30/R3 - * * / I oil-submersed installation

/ E external installation

Two-stage pump with fixed displacement : **09** = 0,9 cm³/rev **12** = 1,2 cm³/rev **19**=1,9 cm³/rev **27**=2,7 cm³/rev