

RADIAL PISTON PUMP

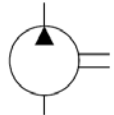


Characteristics

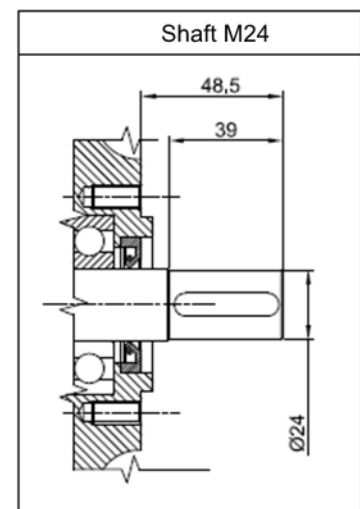
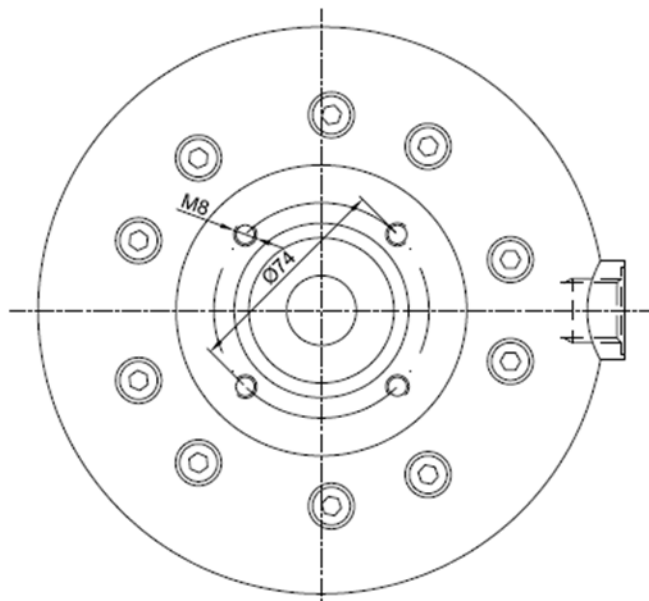
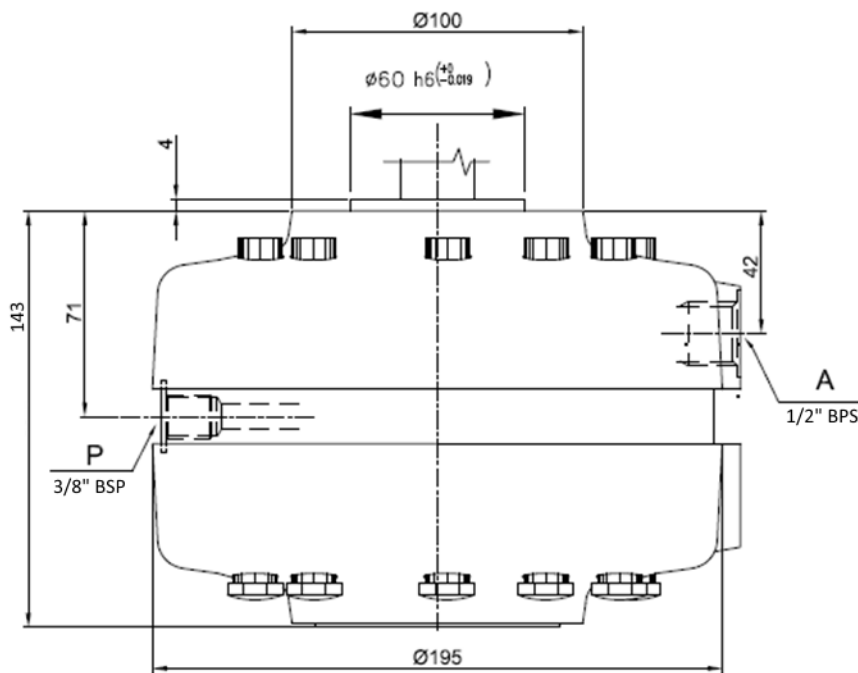
TYPE	cm ³ /rev	Speed range rpm	l/min at 1450 rpm max pressure	P max	Absorbed Power kW	Weight Kg
IPFR 14-88	8,8	600÷1800	10,8	500	9.3	12
IPFR 14-127	12.7		16,5	350	10	12

Description Fixed displacement radial piston pump type IPFR14 with 14 cylinders

Symbol



Dimensions





Installation rules

- Fixed displacement radial piston pump with 14 cylinders
- Fixing : flange type on shaft side
- Direction speed : reversible
- Rotation speed : 600-1800 g/m
- Installation : external or submersed to be specified
- Ambient temperature range : -20°C to +80°C
- Fluid temperature: from -10° to + 70° C (suggested 30-50°C)
- Recommended filtration : mineral oil according to DIN 51524-51525
- Fluid viscosity range : 16-300cSt (2,4-40°E), (recommended 16-35 cSt)
- Oil contamination level: ISO 16/13 – Recommended filters 10 : 25 μ (either feed or return filter)

Ordering code

IPFR14 - * * / I oil-submersed installation

/ E external installation

Fixed displacement radial piston pump : **88** = 8,8 cm³/rev **127** = 12,7 cm³/rev