

RADIAL PISTON PUMP

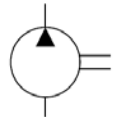


Characteristics

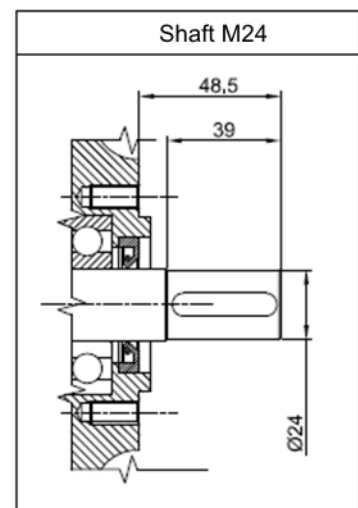
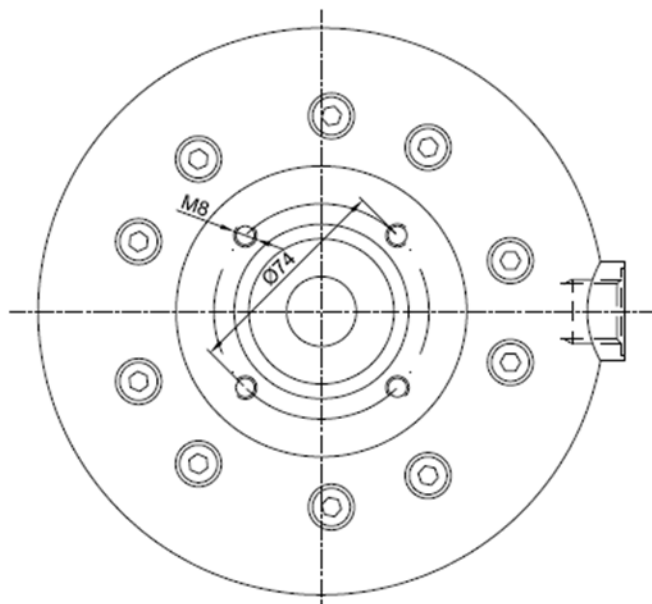
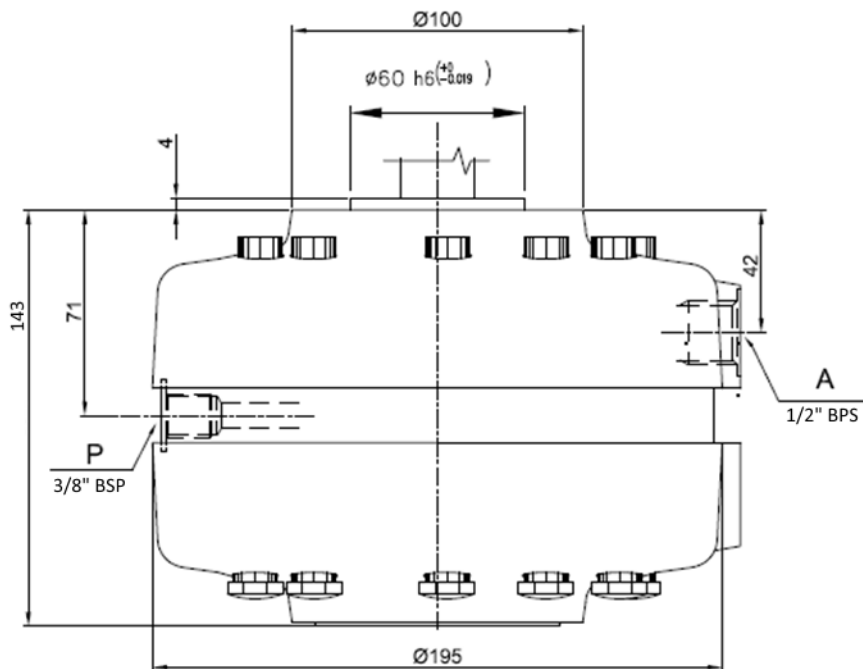
TYPE	cm ³ /rev.	Speed range rpm	l/min at 1450 rpm max pressure	P max	Absorbed power kW	Weight Kg
IPFR 10-63	6,3	600÷1800	7,7	500	6.7	12
IPFR 10-89	8,9		11,8	350	7.1	12

Description Fixed displacement radial piston pump type IPFR10 with 10 cylinders

Symbol



Dimensions





Installation rules

- Fixed displacement radial piston pump with 10 cylinders
- Fixing: flange type on shaft side
- Direction speed: reversible
- Rotation speed: 600-1800 g/m
- Installation : external or submersed to be specified
- Ambient temperature range : -20°C to +80°C
- Fluid temperature: from -10° to + 70° C (suggested 30-50°C)
- Recommended filtration : mineral oil according to DIN 51524-51525
- Fluid viscosity range : 16-300cSt (2,4-40°E), (recommended 16-35 cSt)
- Oil contamination level: ISO 16/13 – Recommended filters 10 : 25 μ (either feed or return filter)

Ordering code

IPFR10 - * * / I oil-submersed installation

/ E external installation

Fixed displacement radial piston pump : **63** = 6,3 cm³/rev **89** = 8,9 cm³/rev