

RADIAL PISTON PUMP

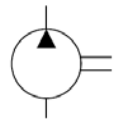


Characteristics

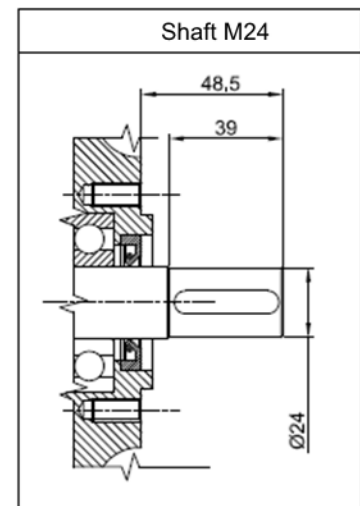
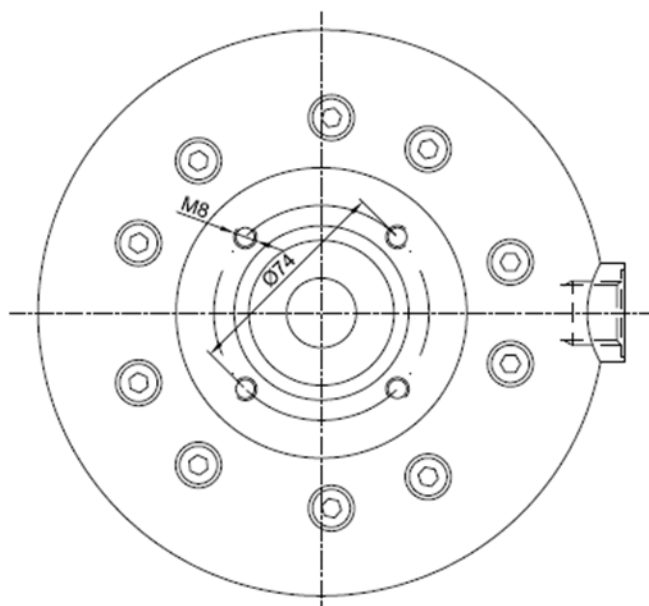
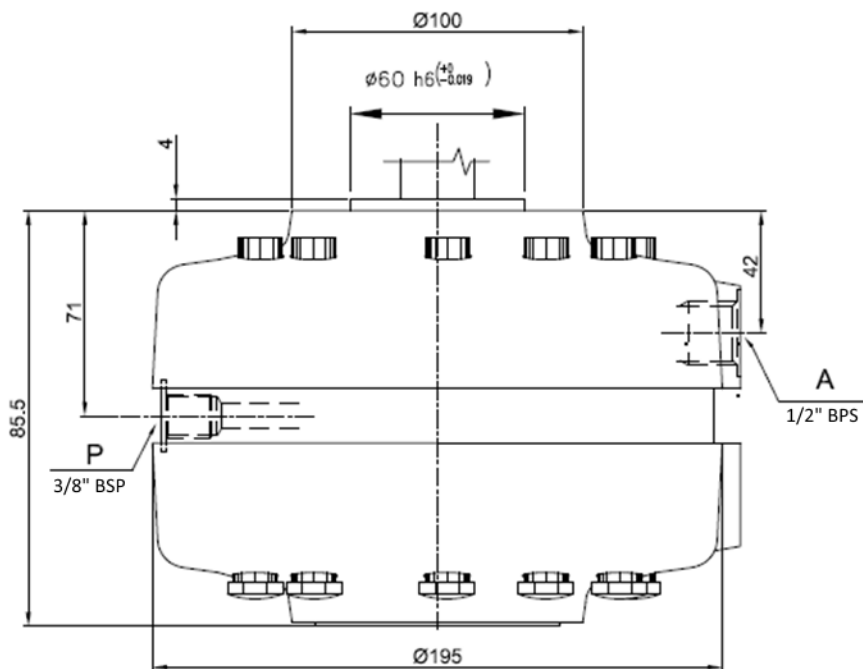
TYPE	cm ³ /rev.	Speed range rpm	l/min 1450 rpm max pressure	P max	Absorbed power kW	Weight Kg
IPFR 7-44	4,4	600÷1800	5,4	500	4.65	7
IPFR 7-64	6,4		8,3	350	5.1	7
IPFR 7-74	7,4		9,6	300	5.1	7

Description Fixed displacement radial piston pump type IPFR7 with 7 cylinders

Symbol



Dimensions





Installation rules

- Fixed displacement radial piston pump with 7 cylinders
- Fixing: flange type on shaft side
- Direction speed : reversible
- Rotation speed : 600-1800 g/m
- Installation : external or submersed to be specified
- Ambient temperature range : -20°C to +80°C
- Fluid temperature: from -10° to + 70° C (suggested 30-50°C)
- Recommended filtration : mineral oil according to DIN 51524-51525
- Fluid viscosity range : 16-300cSt (2,4-40°E), (recommended 16-35 cSt)
- Oil contamination level: ISO 16/13 – Recommended filters 10 : 25 μ (either feed or return filter)

Ordering code

IPFR7 - * * / I oil-submersed installation

/ E external installation

Fixed displacement radial piston pump : **44** = 4,4 cm³/rev **64** = 6,4 cm³/rev **74** = 7,4 cm³/rev