

# RADIAL PISTON PUMP

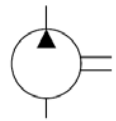


## Characteristics

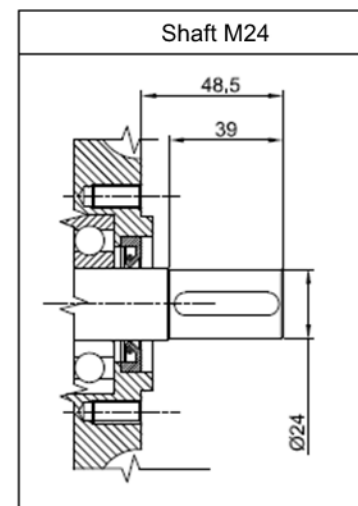
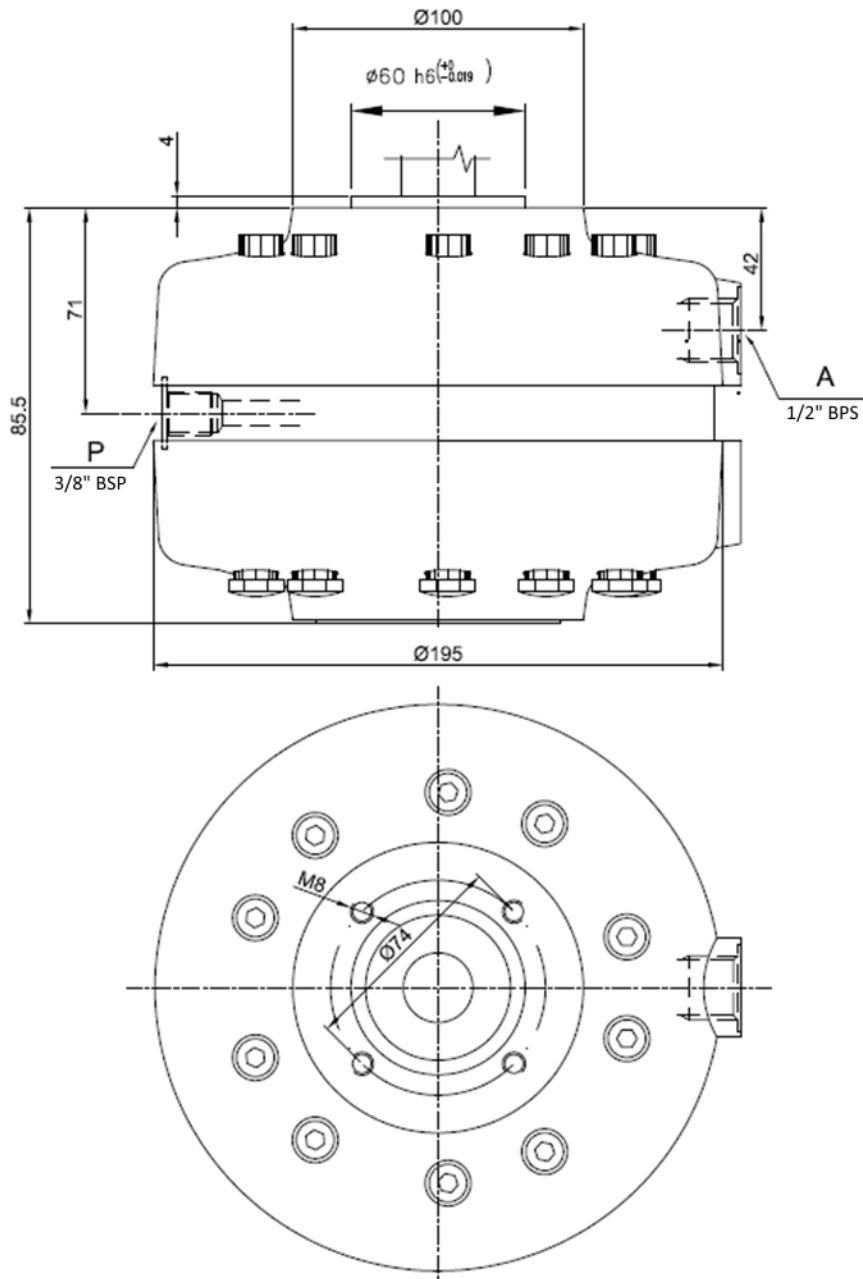
TYPE	cm <sup>3</sup> /rev	Speed	l/min at 1450 rpm max pressure	P max	Absorbed power kW	Weight Kg
IPFR 5-32	3,2	600÷1800	3,9	500	3.35	5
IPFR 5-45	4,5		5,9	350	3.55	5
IPFR 5-53	5,3		6,9	300	3.55	5

**Description** Fixed displacement radial piston pump type IPFR5 with 5 cylinders

## Symbol



## Dimensions





## Installation rules

- Fixed displacement radial piston pump with 5 cylinders
- Fixing: flange type on shaft side
- Direction speed: reversible
- Rotation speed: 600-1800 g/m
- Installation: external or submersed to be specified
- Ambient temperature range: -20°C to +80°C
- Fluid temperature: from -10° to + 70° C ( suggested 30-50°C)
- Recommended filtration: mineral oil according to DIN 51524-51525
- Fluid viscosity range: 16-300cSt (2,4-40°E), (recommended 16-35 cSt )
- Oil contamination level: ISO 16/13 – Recommended filters 10 : 25 μ (either feed or return filter)

## Ordering code

**IPFR5 - \* \* / I** oil-submersed installation

**/ E** external installation

Fixed displacement radial piston pump : **32** = 3,2 cm<sup>3</sup>/rev    **45** = 4,5 cm<sup>3</sup>/rev    **53** = 5,3 cm<sup>3</sup>/rev