

RADIAL PISTON PUMP

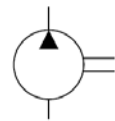


Characteristics

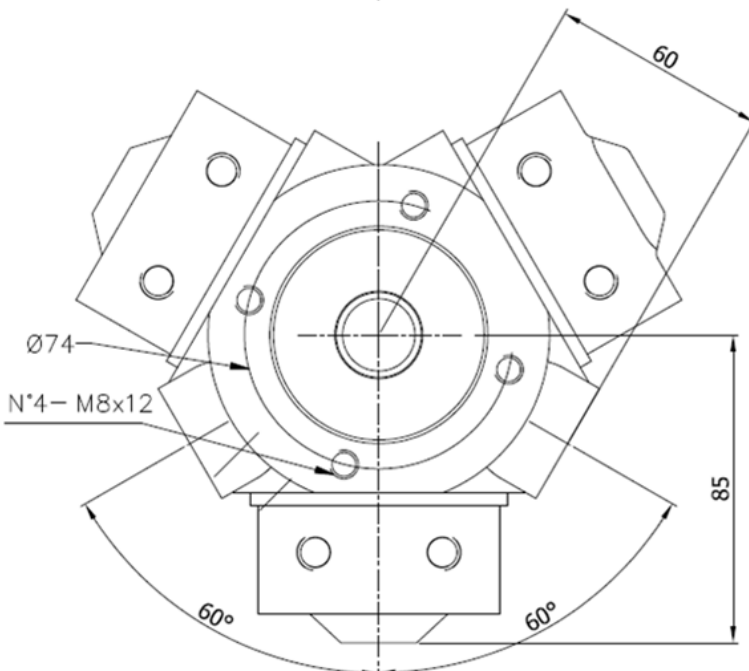
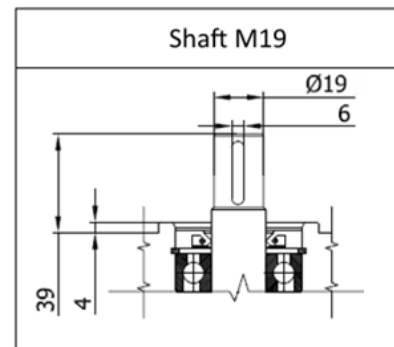
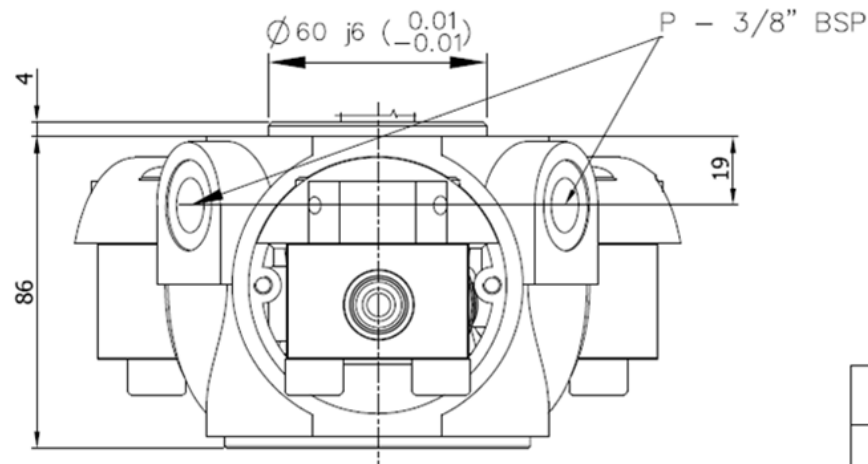
TYPE	cm ³ /rev.	Speed range rpm	l/min at 1450 rpm max pressure	P max	Absorbed power kW	Weight Kg
IPFR 3-09	0.9	600÷1800	1,2	800	1.7	3,5
IPFR 3-12	1.2		1,4	600	1.45	3,5
IPFR 3-19	1.9		2,2	500	2	3,5
IPFR 3-27	2.7		2,2	350	2.1	3,5

Description Fixed displacement radial piston pump type IPFR3 with 3 cylinders

Symbol



Dimensions





Installation rules

- Fixed displacement radial piston pump with 3 cylinders
- Fixing: flange type on shaft side
- Direction speed : reversible
- Rotation speed : 600-1800 rpm
- Installation: external or submersed - to be specified
- Ambient temperature range : -20°C to +80°C
- Fluid temperature: from -10° to + 70° C (suggested 30-50°C)
- Recommended filtration : mineral oil according to DIN 51524-51525
- Fluid viscosity range : 16-300cSt (2,4-40°E), (recommended 16-35 cSt)
- Oil contamination level: ISO 16/13 – Recommended filters: 10 : 25 μ (either feed or return filter)

Ordering code

IPFR3 - * * / I : oil-submersed installation

/ E external installation

Fixed displacement radial piston pump: **09** = 0,9 cm³/rev **12** = 1,2 cm³/rev **19** = 1,9 cm³/rev **27** = 2,7 cm³/rev