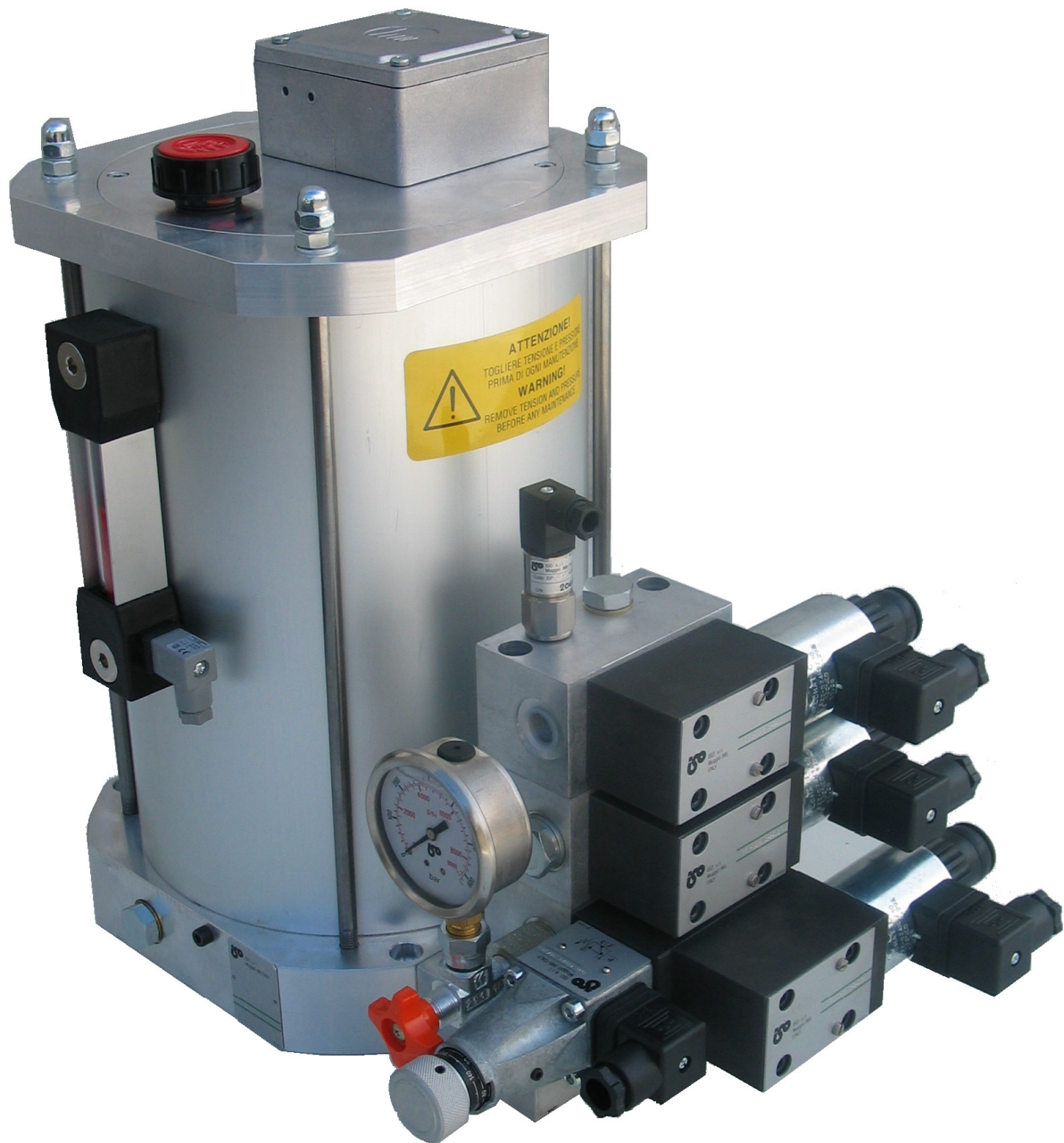


# MINI POWER PACKS type IMS WITH SUBMERSED MOTOR AND PUMP



# MINI POWER PACKS type IMS WITH SUBMERSED MOTOR AND PUMP



## Characteristics

TYPE	Nominal value	Protection	Noise	Weight
IMS - 05	1400 g/min	IP-54	<60 db	~ 33 Kg
IMS - 10	220/380V50Hz			~ 38 Kg

Pump displacement							
Electric motor power (kw)	0,91 cc (1,3 l/min)	1,56 cc (2,2 l/min)	2,60 cc (3,7 l/min)	3,64 cc (5,2 l/min)	4,94 cc (6,5 l/min)	6,50 cc (9,4 l/min)	9,88 cc (14,3 l/min)
0,37	160 bar	90 bar	50 bar				
0,75	250 bar	200 bar	120 bar	80 bar	60 bar		
1,1		250 bar	170 bar	120 bar	90 bar	60 bar	
1,5			230 bar	160 bar	120 bar	90 bar	50 bar

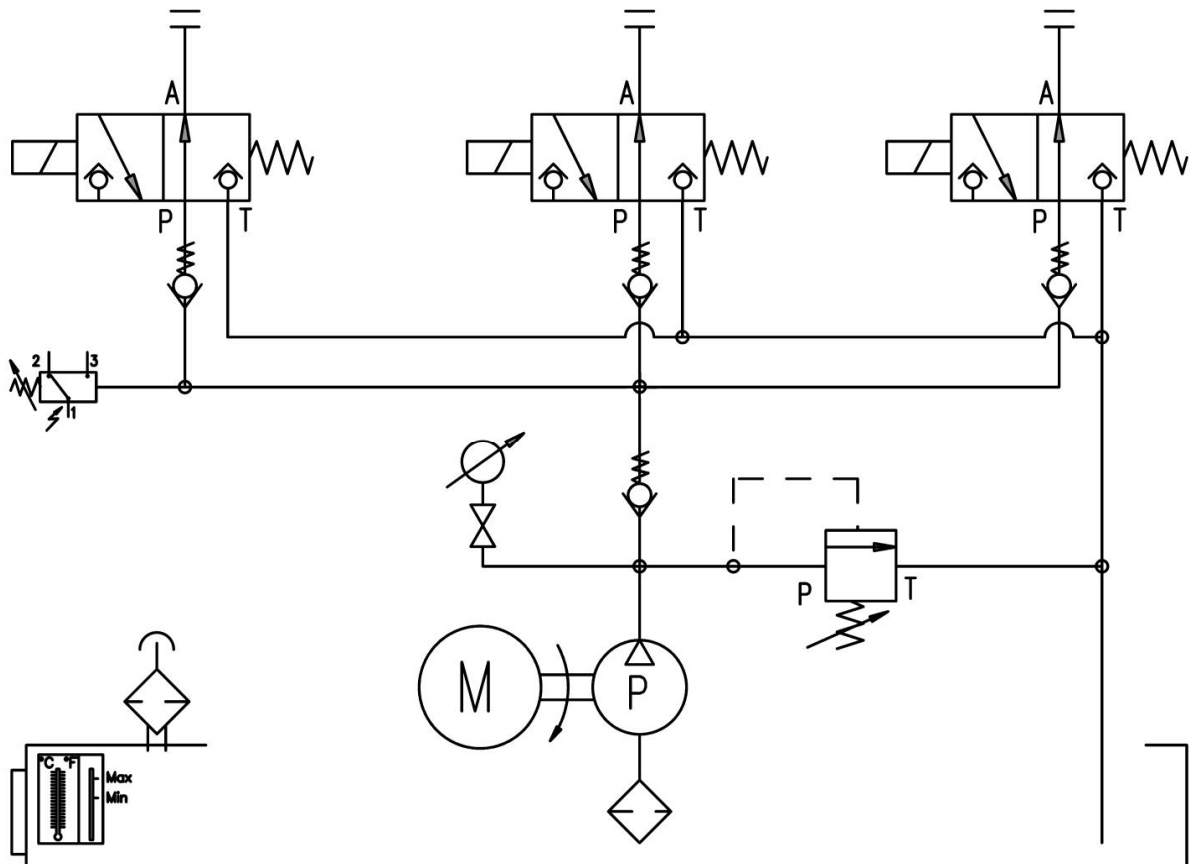
## Description

The hydraulic mini power packs type **IMS** have a compact design to allow an easy installation and a limited maintenance; they have been designed to activate locking cylinders on tool machines.

They are equipped with submersed motor and pump in oil and with an aluminum reservoir to reduce noise and loss of heat.

They are available with electrical motors with different powers: from 0.37 to 1.5 Kw V 230 230/400 – 50/60 Hz.

## Symbol



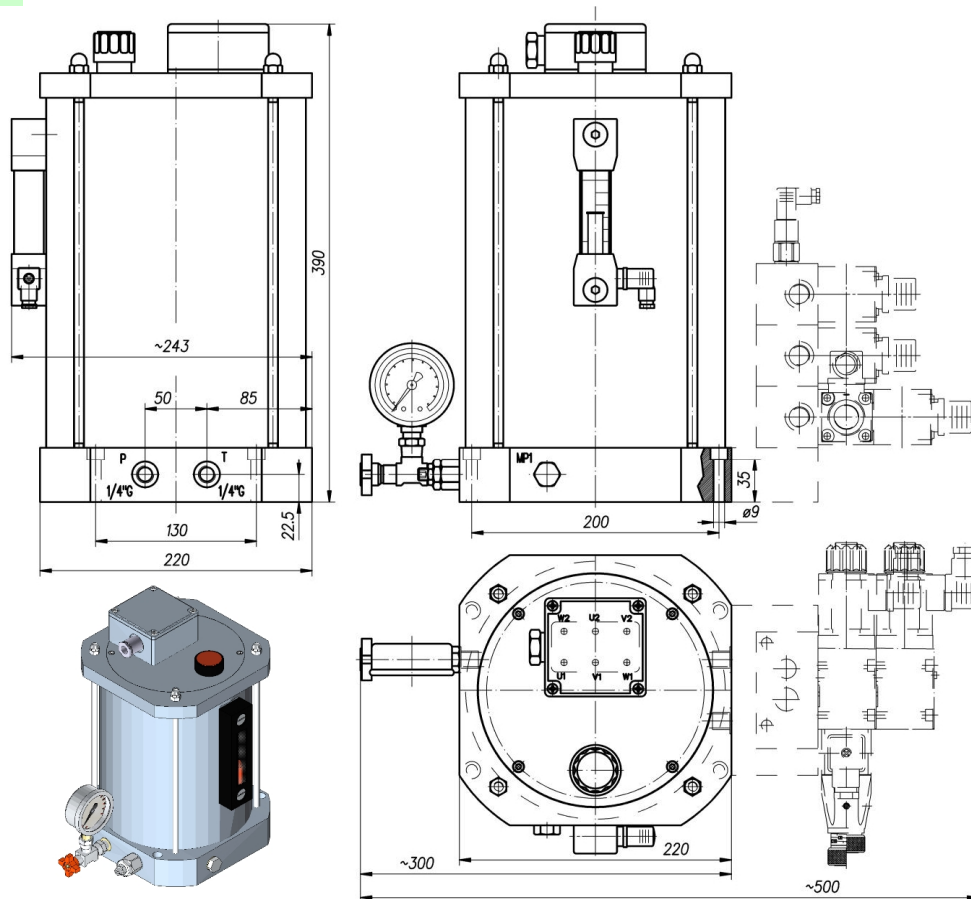
# MINI POWER PACKS type IMS WITH SUBMERSED MOTOR AND PUMP



## Installation rules

- Mounting: vertical position compulsory
- Fluid to be used: hydraulic oil in compliance with DIN 51524 and viscosity between 30 and 100 mm<sup>2</sup>/s (cSt) at 40°C
- Recommended filtration: 25µ
- Oil temperature: from -10° to +65°C

## Dimensions



## Ordering code

IMS	-	**	-	***	-	***	-	**
Type of power pack								
Reservoir capacity								
Displacement gear pump								
cm <sup>3</sup>   l/min (1450 g/min)								
0,91								
1,56								
2,60								
3,64								
4,94								
6,50								
9,88								
Motor power in Kw (da 0,37 a 1,5)								

- Options
- S** = Standard (visual level)
  - E** = Electrical level (minimum volume)
  - P** = Pressure switch
  - 0 ÷ 6** = N° of Cetop 03 stations
  - T** = Thermostat